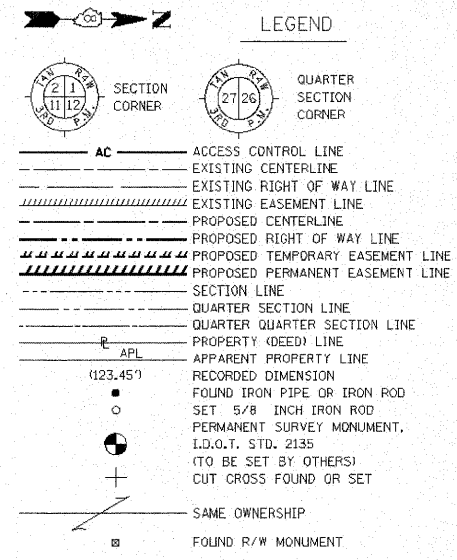
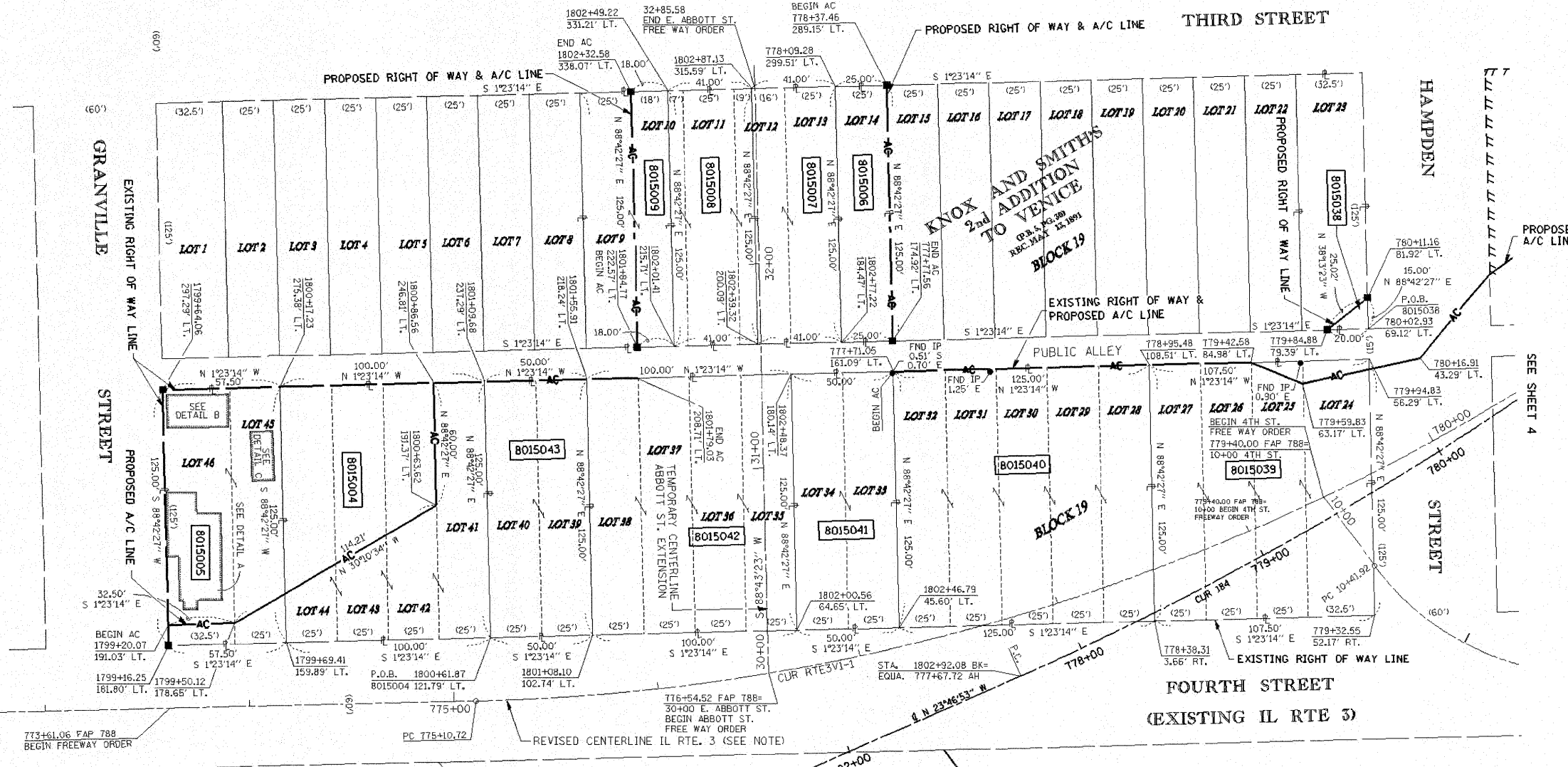


PART OF BLOCK 19 IN KNOX AND SMITH'S 2nd ADDITION TO VENICE, IN U.S. SURVEY NO. 618 AND IN U.S. SURVEY NO. 616, MADISON COUNTY, ILLINOIS



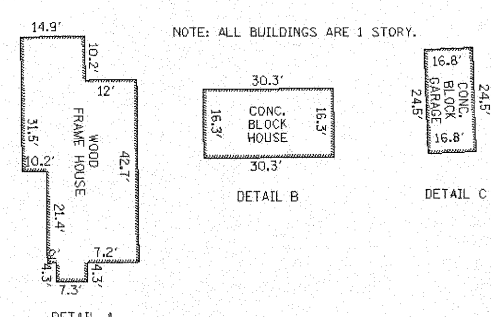
- STAKING OF PROPOSED RIGHT OF WAY. SET 5/8 INCH METAL ROD WITH DIVISION OF HIGHWAY SURVEY MARKER TO MONUMENT THE POSITION SHOWN, IDENTIFIED BY INSCRIPTION DATA AND SURVEYORS REGISTRATION NUMBER.
- STAKING OF PROPOSED RIGHT OF WAY IN CULTIVATED AREAS. SET 5/8 INCH METAL ROD WITH DIVISION OF HIGHWAY SURVEY MARKER 20 INCHES BELOW GROUND SURFACE TO MONUMENT THE POSITION SHOWN, IDENTIFIED BY INSCRIPTION DATA AND SURVEYORS REGISTRATION NUMBER.

STATE OF ILLINOIS)
 COUNTY OF LEE) SS

THIS IS TO CERTIFY THAT I, COVENTINE FIDIS, AN ILLINOIS PROFESSIONAL LAND SURVEYOR, HAVE SURVEYED THE PLAT OF HIGHWAYS SHOWN HEREON IN MADISON COUNTY, THAT THE SURVEY IS TRUE AND COMPLETE AS SHOWN TO THE BEST OF MY KNOWLEDGE AND BELIEF, THAT THE PLAT CORRECTLY REPRESENTS SAID SURVEY, THAT ALL MONUMENTS FOUND AND ESTABLISHED ARE OF PERMANENT QUALITY AND OCCUPY THE POSITIONS SHOWN THEREON AND THAT THE MONUMENTS ARE SUFFICIENT TO ENABLE THE SURVEY TO BE RETRACED, MADE FOR THE DEPARTMENT OF TRANSPORTATION.

DATED _____

NOTE: ALIGNMENT WAS REVISED. STATIONING WILL NOT MATCH CONSTRUCTION PLANS IN THIS REALIGNMENT



FAP 788 PROPOSED CURVE DATA CUR 184	(REVISED) FAP 788 PROPOSED CURVE DATA CUR RTE3V1-1	(REVISED) FAP 788 PROPOSED CURVE DATA CUR RTE3V1-2
PI STA. = 781+38.06	PI STA. = 788+64.72	PI STA. = 783+43.79
Δ = 27°5'00"	Δ = 38°3'46"	Δ = 11°3'56"
D = 3'45'00"	D = 6'37'30"	D = 3'44'54"
R = 1,527.89'	R = 1,048.59'	R = 1,528.59'
T = 370.34'	T = 354.01'	T = 351.86'
L = 126.67'	L = 681.41'	L = 302.33'
E = 44.24'	E = 59.76'	E = 7.51'
P.C. STA. = 777+67.72	P.C. STA. = 775+10.72	P.C. STA. = 781+92.13
P.C.C. STA. = 784+94.39	P.C.C. STA. = 781+92.13	P.T. STA. = 784+94.46

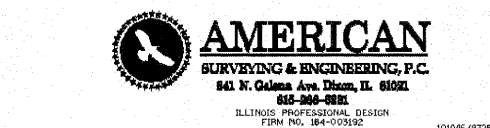
PARCEL NO.	OWNER	TOTAL HOLDING	R.O.W. REQUIRED	REMAINDER	TEMP EASEMENT	EASEMENT PURPOSE	PERMANENT TAX NUMBER	PROPERTY ACQUIRED BY
8015004	CLIFFORD F. MATHIS & ROSIE LEE MATHIS TITLE REPORT NO. MA-2817	0.2870 AC 12,500 SF	0.2870 AC 12,500 SF	0 AC 0 SF	N/A	N/A	21-2-19-35-12-202-003 21-2-19-35-12-202-004 21-2-19-35-12-202-005	BK. 4638 PG. 3697
8015005	DONALD E. SEVERS & ANN R. SEVERS TITLE REPORT NO. MA-3175	0.1650 AC 7,188 SF	0.1650 AC 7,188 SF	0 AC 0 SF	N/A	N/A	21-2-19-35-12-202-001 21-2-19-35-12-202-002	BK. 4645 PG. 4432
8015006	EVELYN FAYE NEWSOME TITLE REPORT NO. MA-3161	0.0711 AC 3,125 SF	0.0711 AC 3,125 SF	0 AC 0 SF	N/A	N/A	21-2-19-35-12-201-024	BK. 4629 PG. 59
8015007	JAMES C. COOPER & ROSE COOPER TITLE REPORT NO. MA-3162	0.1171 AC 5,125 SF	0.1171 AC 5,125 SF	0 AC 0 SF	N/A	N/A	21-2-19-35-12-201-025	BK. 4626 PG. 3896
8015008	CITY OF VENICE TITLE REPORT NO. MA-3163	0.1171 AC 5,125 SF	0.1171 AC 5,125 SF	0 AC 0 SF	N/A	N/A	21-2-19-35-12-201-026	
8015009	ZELMA M. TURNAGE TITLE REPORT NO. MA-3164	0.1234 AC 5,375 SF	0.0517 AC 2,250 SF	0.0717 AC 3,125 SF	N/A	N/A	21-2-19-35-12-201-027	
8015038	GEORGE BIZZLE, MARGIE BIZZLE & BRENDA AUSTIN, AS JOINT TENANTS TITLE REPORT NO. MA-2816	0.0932 AC 4,063 SF	0.0034 AC 150 SF	0.0898 AC 3,913 SF	N/A	N/A	21-2-19-35-12-201-017	04-ED-1
8015039	ROLAND D. WILSON & CAROLYN E. WILSON TITLE REPORT NO. MA-2008, 2016, 2017	0.3085 AC 13,437 SF	0.3085 AC 13,437 SF	0 AC 0 SF	N/A	N/A	21-2-19-35-12-202-013 014-015-016	BK. 4629 PG. 71
8015040	BIRL REED & GLORIA REED TITLE REPORT NO. MA-2017.02, 2017.03	0.3587 AC 15,825 SF	0.3587 AC 15,825 SF	0 AC 0 SF	N/A	N/A	21-2-19-35-12-202-011 21-2-19-35-12-202-012	2004R87883
8015041	KEITH WILLIAMS TITLE REPORT NO. MA-2017.04	0.1435 AC 6,250 SF	0.1435 AC 6,250 SF	0 AC 0 SF	N/A	N/A	21-2-19-35-12-202-010	
8015042	ANDREW TRICE & CHRISTIANNA TRICE TITLE REPORT NO. MA-2017.05, 2017.06	0.2870 AC 12,500 SF	0.2870 AC 12,500 SF	0 AC 0 SF	N/A	N/A	21-2-19-35-12-202-007 21-2-19-35-12-202-008 21-2-19-35-12-202-009	BK. 4657 PG. 1748
8015043	RUBY L. JOHNSON TITLE REPORT NO. MA-2017.08	0.1435 AC 6,250 SF	0.1435 AC 6,250 SF	0 AC 0 SF	N/A	N/A	21-2-19-35-12-202-006	BK. 4629 PG. 63

ILLINOIS PROFESSIONAL LAND SURVEYOR NO. 2159
 COVENTINE FIDIS MY LICENSE EXPIRES 11/30/08

BEARINGS SHOWN HEREON ARE BASED ON THE MISSISSIPPI RIVER CROSSING (NAD) COORDINATE SYSTEM WHICH IS A MODIFIED UNIVERSAL TRANSVERSE MERCATOR (UTM) SYSTEM, ZONE 15 NORTH.

SEE SHEET 9 FOR COORDINATE LIST

NOTE: EXISTING RIGHT OF WAY ESTABLISHED PER P.B. 5, PG. 30



ILLINOIS DEPARTMENT OF TRANSPORTATION
PLAT OF HIGHWAYS FOR
 FAP ROUTE 788 (IL 3)
 SECTION 520-2-2
 MADISON COUNTY
 JOB NO. R-98-015-00
 STATION 773+61 TO STATION 780+00

SCALE: 1" = 30'

ILLINOIS DEPARTMENT OF TRANSPORTATION
 DIVISION OF HIGHWAYS/DISTRICT 8
 1102 EASTPORT PLAZA DRIVE
 COLLINGSVILLE, ILLINOIS 62234-6198