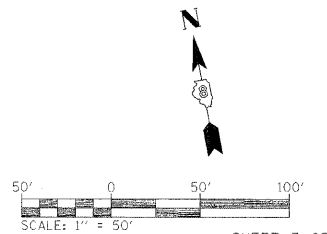
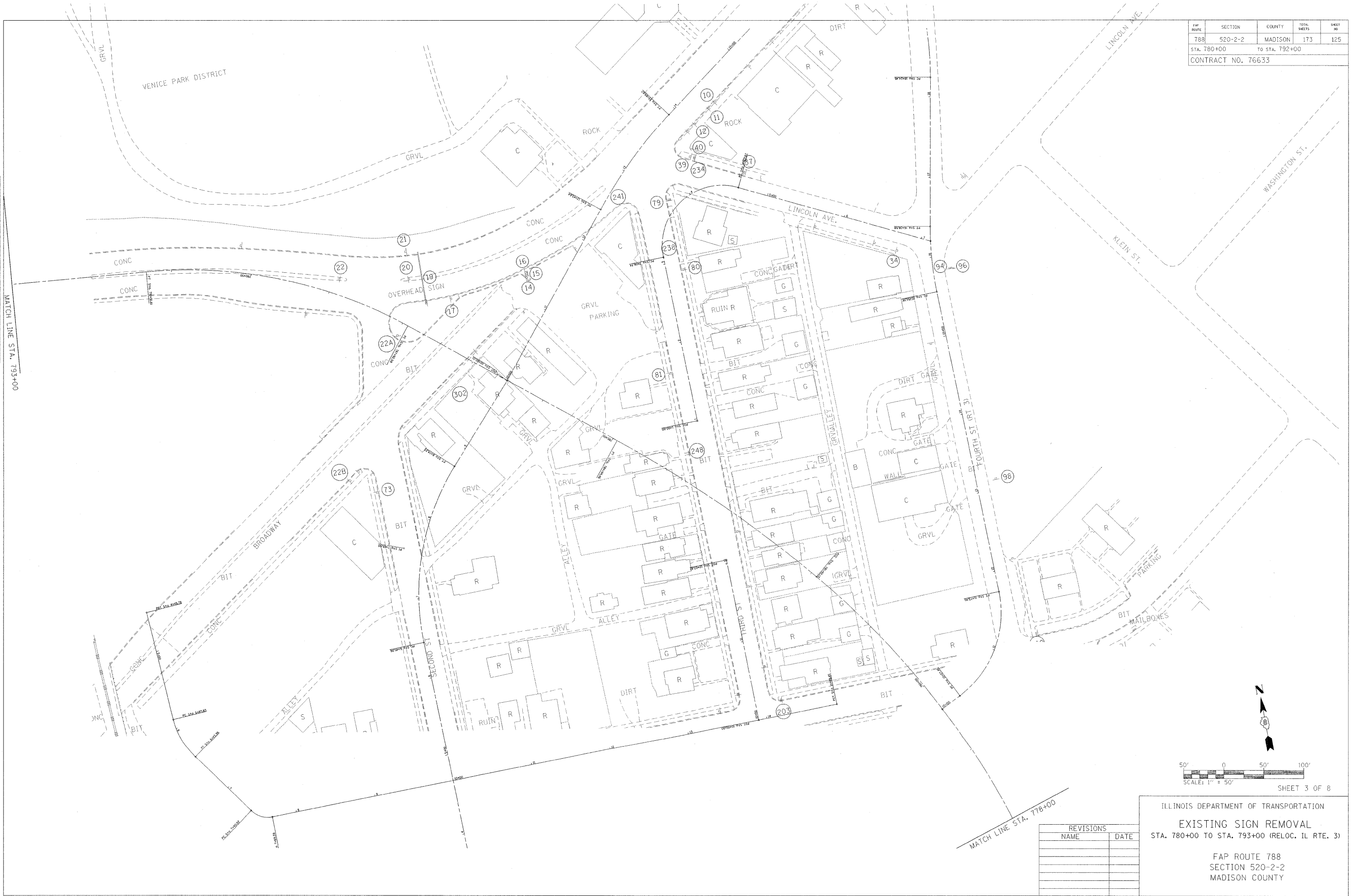


FAP ROUTE	SECTION	COUNTY	TOTAL SHEETS	SHEET NO
788	520-2-2	MADISON	173	125
STA. 780+00		TO STA. 792+00		
CONTRACT NO. 76633				

PLAN	SURVEYED	DATE
	BY	
	NOTE BOOK	
	NO. OF PAGES CHECKED	
	NO. OF PAGES	
	NO. OF PAGES	
	NO. OF PAGES	

MATCH LINE STA. 793+00



REVISIONS	
NAME	DATE

ILLINOIS DEPARTMENT OF TRANSPORTATION
EXISTING SIGN REMOVAL
 STA. 780+00 TO STA. 793+00 (RELOC. IL RTE. 3)
 FAP ROUTE 788
 SECTION 520-2-2
 MADISON COUNTY

02/02/2011 02:28:09 PM
 DON-SPEC
 REF - EXIST 2
 REF -