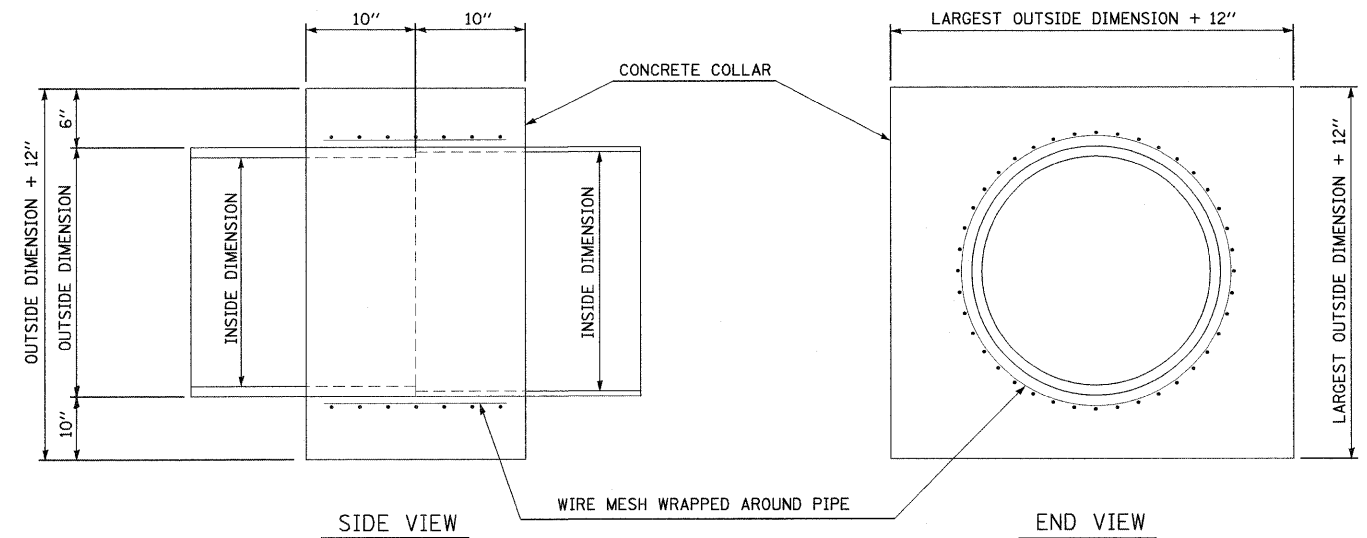


CONNECTION TO EXISTING STRUCTURE

NOT TO SCALE



CONCRETE COLLAR DETAIL

NOT TO SCALE

NOTES:

1. CLASS MS CONCRETE SHALL BE USED THROUGHOUT.
2. WHEN CONCRETE COLLARS ARE USED TO CONNECT PIPES OF DIFFERENT OUTSIDE DIMENSIONS, THE CONCRETE COLLAR SHALL BE FORMED USING THE LARGEST OUTSIDE DIMENSION. (SEE END VIEW)
3. THE WIRE MESH SHALL WEIGH NOT LESS THAN 54 POUNDS PER 100 SQ. FT.

FILE NAME =
r3ndrain_detail4_new.dgn

USER NAME = weaverlg

DESIGNED - A. FREY

REVISED -

DRAWN - E. WISE

REVISED -

CHECKED - T. EMBREY

REVISED -

DATE - 02/06/2009

REVISED -

PLOT SCALE = #SCALE#

PLOT DATE = 02/02/2009

**STATE OF ILLINOIS
DEPARTMENT OF TRANSPORTATION**

DRAINAGE STRUCTURE DETAILS

SCALE: SHEET NO. 5 OF 7 SHEETS STA. TO STA.

F.A. RTE. 788	SECTION 520-2-2	COUNTY MADISON	TOTAL SHEETS 173	SHEET NO. 135
FED. ROAD DIST. NO. ILLINOIS FED. AID PROJECT			CONTRACT NO. 76633	