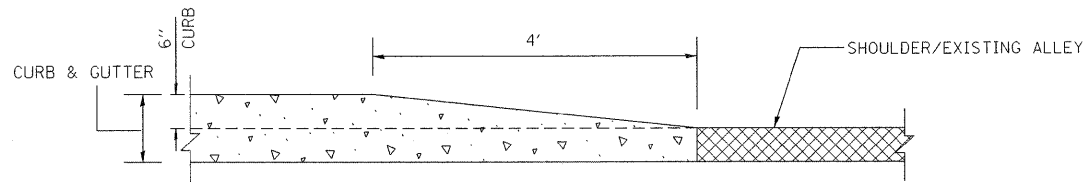
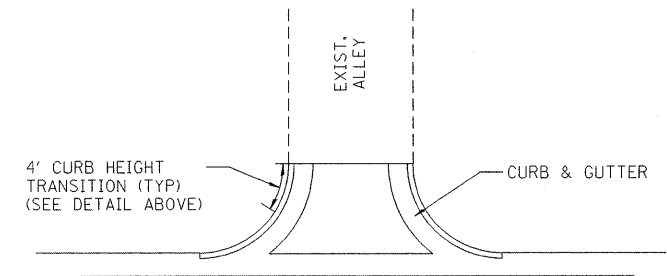


(1) END 4' BITUMINOUS SHOULDER / BEGIN 5:1 TRANSITION LEFT, STA 774+50.00 REL IL 3

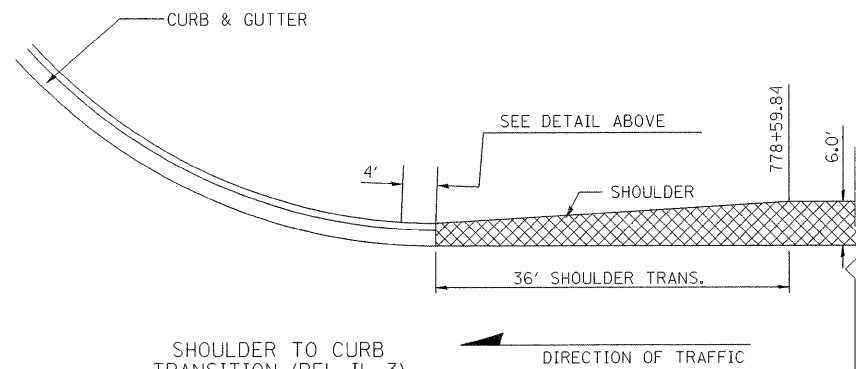
CURB TO SHOULDER TRANSITION (REL IL 3)
(NO SCALE)



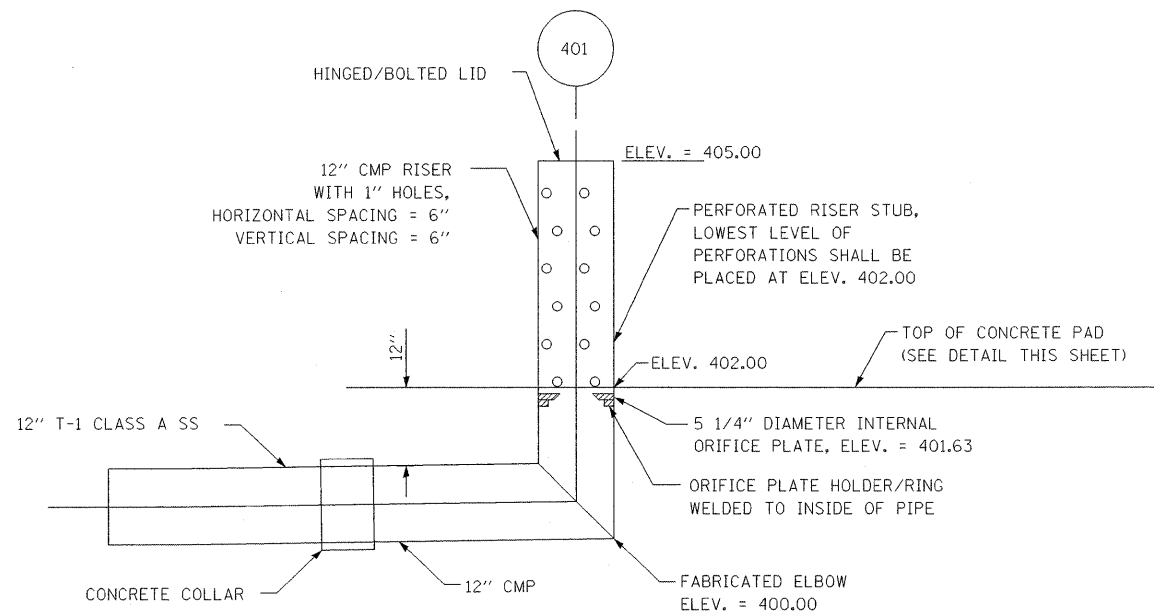
DETAIL OF CURB HEIGHT TRANSITION



TYPICAL ALLEY TO CURB TRANSITION
(NO SCALE)

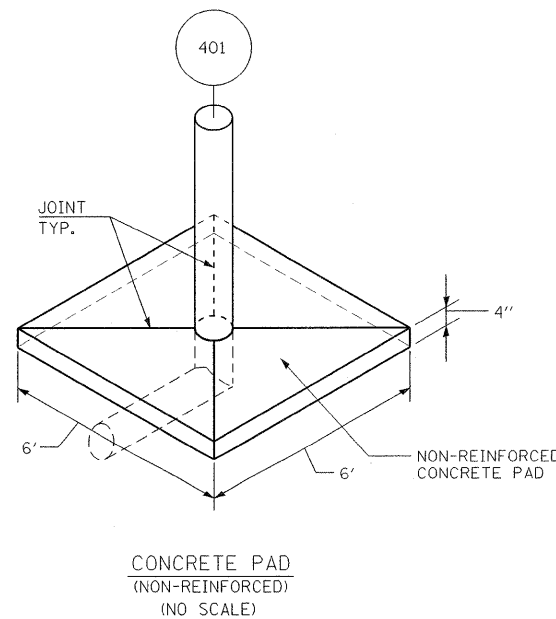


SHOULDER TO CURB TRANSITION (REL IL 3)
(NO SCALE)

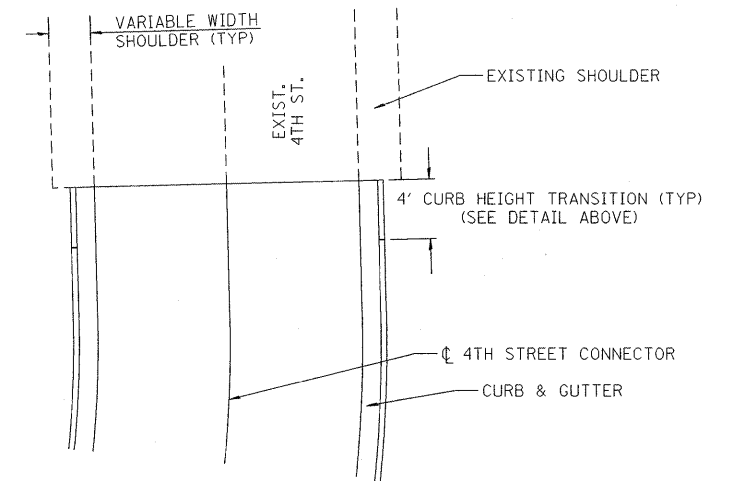


DETENTION BASIN OUTLET STRUCTURE
(INLET SPECIAL NO. 1)
(NO SCALE)

- NOTES:
- FABRICATED ELBOW AND PERFORATED RISER STUB SHALL BE FABRICATED AS ONE PIECE.
 - INTERNAL ORIFICE PLATE SHALL BE FABRICATED/SIZED TO ALLOW REMOVAL OF ORIFICE PLATE FOR CLEANING OF 12" CMP.
 - CMP SHALL BE 14-GAUGE MINIMUM.



CONCRETE PAD
(NON-REINFORCED)
(NO SCALE)



CURB TO SHOULDER TRANSITION (4TH STREET)
(NO SCALE)

FILE NAME = r3nct_detail_new.dgn	USER NAME = weaverlg	DESIGNED - A. FREY	REVISED -	STATE OF ILLINOIS DEPARTMENT OF TRANSPORTATION	MISCELLANEOUS DETAILS			F.A. RTE. 788	SECTION 520-2-2	COUNTY MADISON	TOTAL SHEETS 173	SHEET NO. 137
		DRAWN - A. PENICK	REVISED -					SCALE: NONE	SHEET NO. 7 OF 7 SHEETS	STA. TO STA.	FED. ROAD DIST. NO.	ILLINOIS FED. AID PROJECT
		CHECKED - T. WELZ	REVISED -									
		DATE - 02/06/2009	REVISED -									