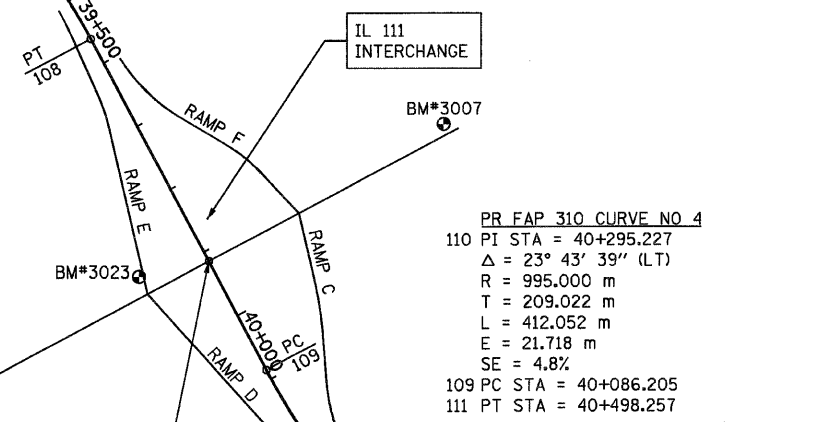
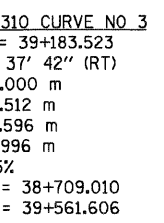
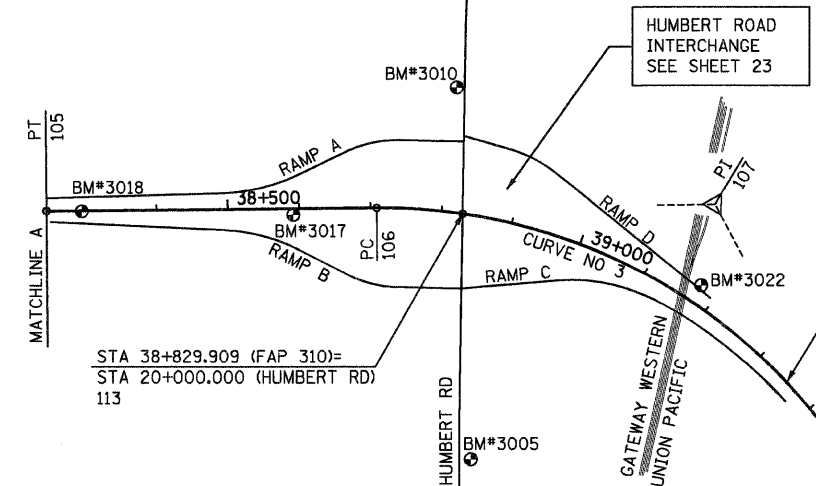
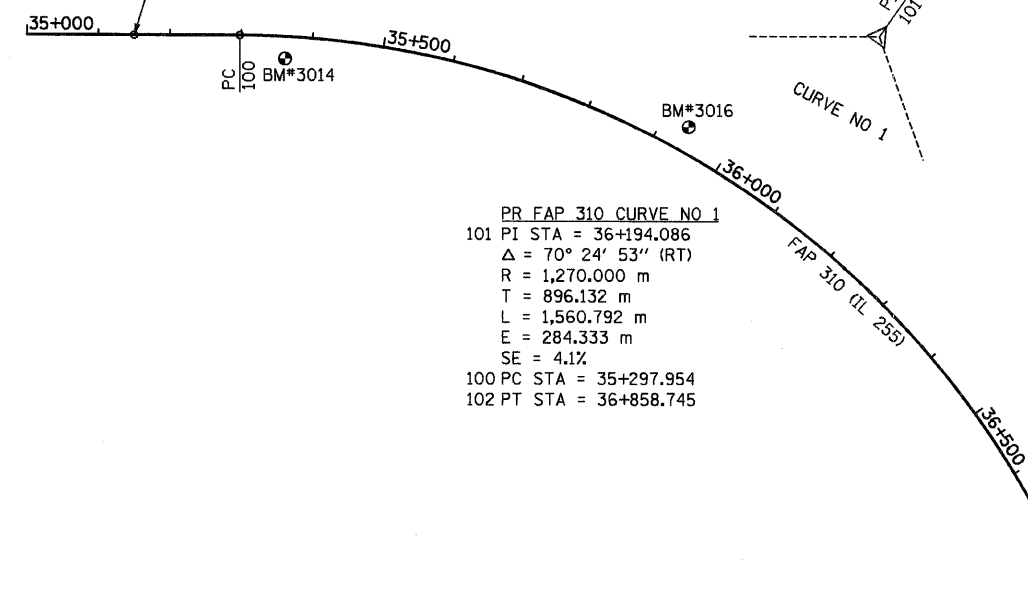


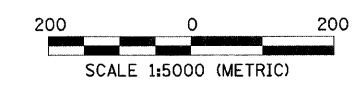
F.A.P. RTE.	SECTION	COUNTY	TOTAL SHEETS	SHEET NO.
310	60-15-1, 60-15HB-1	MADISON	238	22
STA.		TO STA.		
FED. ROAD DIST. NO.		ILLINOIS FED. AID PROJECT		
CONTRACT NO. 76635				

CONTROL POINTS		
POINT	NORTHING	EASTING
100	253,215.1909	701,492.4699
101	253,215.1990	700,596.3380
102	254,059.4870	700,295.9546
103	254,455.9892	700,154.8859
104	254,980.1650	699,968.3930
105	254,974.4927	699,412.0589
106	254,969.7738	698,949.2235
107	254,964.9360	698,474.7360
108	255,384.0772	698,252.2896
109	255,847.4601	698,006.3632
110	256,032.0913	697,908.3758
111	256,161.6866	697,744.3781
112	253,215.1905	701,540.4235
113	254,977.8964	698,828.7196
114	255,695.9215	698,086.7876
115	256,460.6840	697,366.0089

BEGIN PROJECT (FAP 310)
STA 35+150.000
112



BENCHMARKS		
MARK	ELEVATION	DESCRIPTION
BM# 3007	188.205	CUT "+" ON WEST FLANGE BOLT OF FIRE HYDRANT LOCATED AT SOUTHEAST CORNER OF THE INTERSECTION OF IL 111 & US 67 - IL 111 STA = 29+619.3, 15.1 m RT
BM# 3008	186.070	CUT "+" ON WEST FLANGE BOLT ON FIRE HYDRANT LOCATED AT NORTHEAST CORNER INTERSECTION US 67 & INGHAM LANE - FAP 310 STA = 40+754.8, 8.5 m RT
BM# 3009	184.977	60d NAIL IN POWER POLE LOCATED ON WEST SIDE OF US 67 AND SOUTH OF MAILBOX 7406
BM# 3010	187.953	CUT "+" IN WEST FLANGE BOLT OF FIRE HYDRANT LOCATED ON EAST SIDE HUMBERT ROAD AND NORTH OF MAILBOX 6415 AT HUMBERT RD (ACROSS FROM CHURCH) - HUMBERT STA = 19+822.2, 11.2 m RT
BM# 3014	149.445	RAILROAD SPIKE IN 30" DIA TREE LOCATED NEAR WEST EDGE OF FIELD - FAP 310 STA = 35+362.7, 30.8 m RT
BM# 3016	171.485	40d NAIL LIGHT POLE LOCATED NORTH OF HILGENDORF HOUSE, AND EAST OF METAL GARAGE - FAP 310 STA = 35+936.7, 34.8 m LT
BM# 3017	188.966	RAILROAD SPIKE IN 12" DIA WALNUT - FAP 310 STA = 38+592.0, 8.7 m RT
BM# 3018	185.947	RAILROAD SPIKE IN 8" DIA TREE - FAP 310 STA = 38+295.5, 0.8 m RT
BM# 3019	175.948	RAILROAD SPIKE IN 12" DIA HICKORY - FAP 310 STA = 37+997.0, 1.0 m LT
BM# 3020	178.758	RAILROAD SPIKE IN 12" DIA TREE - FAP 310 STA = 36+828.0, 0.5 m LT
BM# 3021	178.523	RAILROAD SPIKE IN 20" DIA TREE - FAP 310 STA = 37+101.0, 0.0 m RT
BM# 3022	188.010	RAILROAD SPIKE IN POWER POLE LOCATED ON WEST SIDE OF RAILROAD TRACKS BETWEEN RAMP D & FAP 310 - FAP 310 STA = 39+173.5, 27.0 m LT
BM# 3023	187.116	CHSLD "X" ON WEST FLANGE BOLT OF FIRE HYDRANT LOCATED ON SOUTH SIDE OF IL 111 IN FRONT OF RISTER'S AUTO



REVISIONS	
NAME	DATE

ILLINOIS DEPARTMENT OF TRANSPORTATION
ALIGNMENT & BENCHMARK DATA
FAP 310 (IL 255)
SECTIONS 60-15-1, 60-15HB-1
MADISON COUNTY
DRAWN BY B G J
CHECKED BY
DATE

p:\00files\0002\4dhumbert\detail\misc\alignmt_bmlb.dgn