

F.A.P. RTE.	SECTION	COUNTY	TOTAL SHEETS	SHEET NO.
310	60-15-1, 60-15HB-1	MADISON	238	23
STA.		TO STA.		
FED. ROAD DIST. NO.		ILLINOIS FED. AID PROJECT		
CONTRACT NO. 76635				

CONTROL POINTS		
POINT	NORTHING	EASTING
200	254, 876.0104	698, 827.0311
201	254, 874.4964	698, 918.3831
202	254, 873.8468	698, 957.5811
203	254, 890.8979	698, 992.8822
204	254, 923.5183	699, 060.4166
205	254, 947.6082	699, 110.2902
206	254, 949.2802	699, 165.6518
207	254, 956.7212	699, 412.0244
208	254, 958.2950	699, 464.1360
209	254, 952.7843	699, 515.9792
210	254, 990.1323	699, 406.0501
211	255, 000.8908	699, 163.2083
212	255, 003.3558	699, 107.5671
213	255, 028.7953	699, 058.0207
214	255, 063.0523	698, 991.3013
215	255, 080.6103	698, 957.1052
216	255, 081.2473	698, 918.6701
217	255, 082.7092	698, 830.4566
218	255, 071.6562	698, 696.8803
219	255, 065.8432	698, 626.6310
220	255, 096.9365	698, 563.3699
221	255, 115.1106	698, 526.3936
222	255, 138.8303	698, 492.7051
223	255, 183.5622	698, 429.1737
224	255, 240.2246	698, 376.0084
225	255, 096.1499	698, 481.6737
226	254, 922.2983	698, 695.4855
227	254, 897.0846	698, 726.4946
228	254, 886.1023	698, 764.9224
229	254, 868.3883	698, 826.9048
230	254, 583.0037	698, 820.0350
231	254, 712.9327	698, 824.3285
232	255, 229.3618	698, 832.8870
233	255, 312.8595	698, 833.5144
234	255, 442.8543	698, 832.3511

PR CURVE RAMP A-3
 208 PI STA = 0+651.106
 $\Delta = 7^\circ 47' 51''$ (RT)
 R = 765.000 m
 T = 52.135 m
 L = 104.110 m
 E = 1.774 m
 SE = 5.5% (MATCH FAP 310)
 207 PC STA = 0+598.971
 209 PT STA = 0+703.081

PR CURVE RAMP A-2
 205 PI STA = 0+298.731
 $\Delta = 24^\circ 03' 05''$ (RT)
 R = 260.000 m
 T = 55.387 m
 L = 109.142 m
 E = 5.834 m
 SE = 6.0%
 204 PC STA = 0+243.344
 206 PT STA = 0+352.486

PR CURVE RAMP A-1
 202 PI STA = 0+130.568
 $\Delta = 26^\circ 43' 51''$ (LT)
 R = 165.000 m
 T = 39.203 m
 L = 76.979 m
 E = 4.593 m
 SE = 6.0%
 201 PC STA = 0+091.365
 203 PT STA = 0+168.344

PR CURVE RAMP D-1
 227 PI STA = 0+315.538
 $\Delta = 23^\circ 09' 55''$ (LT)
 R = 195.000 m
 T = 39.966 m
 L = 78.841 m
 E = 4.054 m
 SE = 5.8%
 226 PC STA = 0+275.572
 228 PT STA = 0+354.413

PR CURVE RAMP B-1
 212 PI STA = 0+298.776
 $\Delta = 24^\circ 38' 29''$ (RT)
 R = 255.000 m
 T = 55.696 m
 L = 109.669 m
 E = 6.012 m
 SE = 6.0%
 211 PC STA = 0+243.080
 213 PT STA = 0+352.749

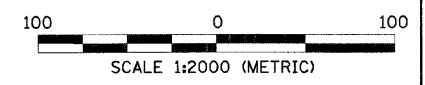
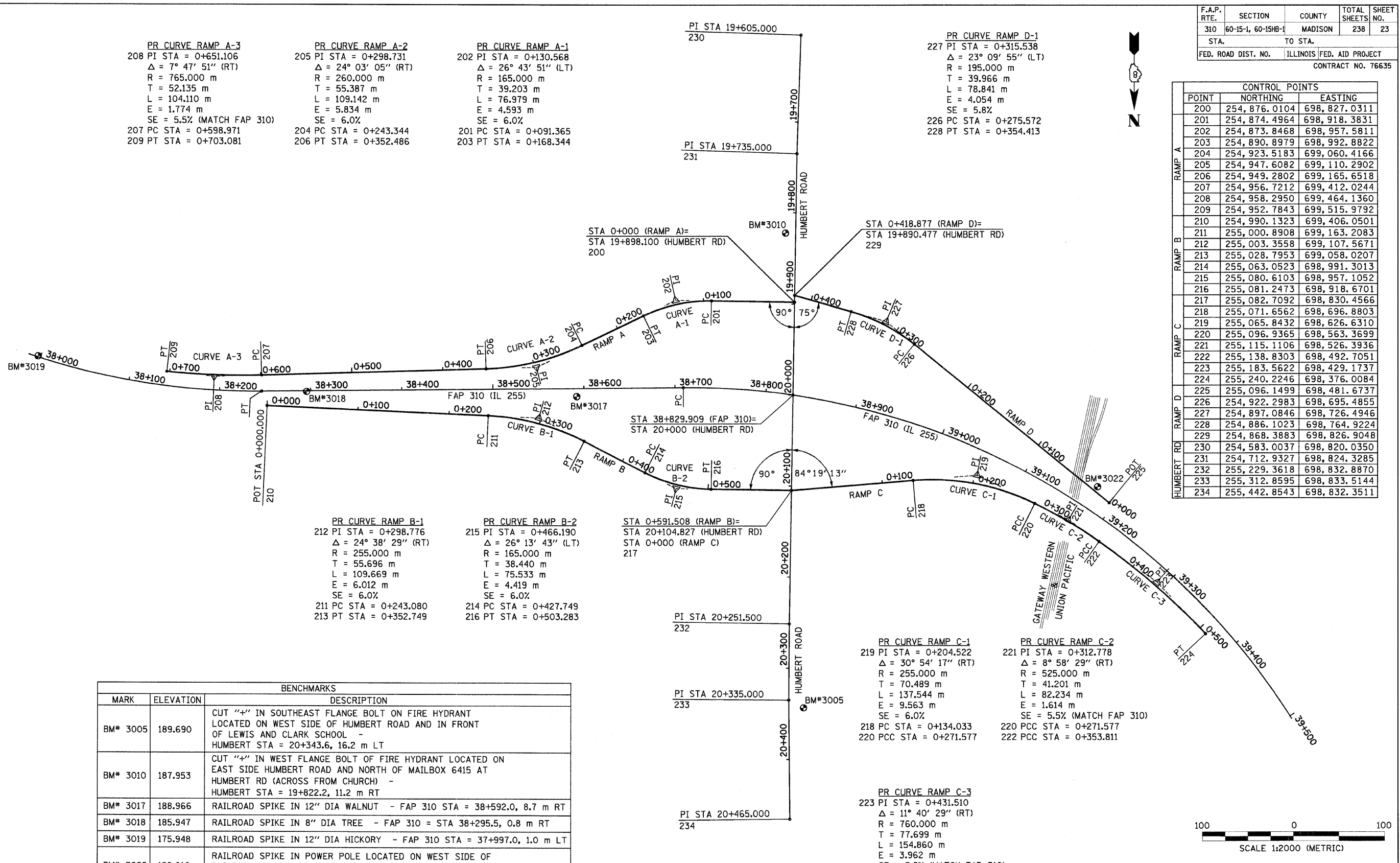
PR CURVE RAMP B-2
 215 PI STA = 0+466.190
 $\Delta = 26^\circ 13' 43''$ (LT)
 R = 165.000 m
 T = 38.440 m
 L = 75.533 m
 E = 4.419 m
 SE = 6.0%
 214 PC STA = 0+427.749
 216 PT STA = 0+503.283

PR CURVE RAMP C-1
 219 PI STA = 0+204.522
 $\Delta = 30^\circ 54' 17''$ (RT)
 R = 255.000 m
 T = 70.489 m
 L = 137.544 m
 E = 9.563 m
 SE = 6.0%
 218 PC STA = 0+134.033
 220 PCC STA = 0+271.577

PR CURVE RAMP C-2
 221 PI STA = 0+312.778
 $\Delta = 8^\circ 58' 29''$ (RT)
 R = 525.000 m
 T = 41.201 m
 L = 82.234 m
 E = 1.614 m
 SE = 5.5% (MATCH FAP 310)
 220 PCC STA = 0+271.577
 222 PCC STA = 0+353.811

PR CURVE RAMP C-3
 223 PI STA = 0+431.510
 $\Delta = 11^\circ 40' 29''$ (RT)
 R = 760.000 m
 T = 77.699 m
 L = 154.860 m
 E = 3.962 m
 SE = 5.5% (MATCH FAP 310)
 222 PCC STA = 0+353.811
 224 PT STA = 0+508.671

BENCHMARKS		
MARK	ELEVATION	DESCRIPTION
BM* 3005	189.690	CUT "+" IN SOUTHEAST FLANGE BOLT ON FIRE HYDRANT LOCATED ON WEST SIDE OF HUMBERT ROAD AND IN FRONT OF LEWIS AND CLARK SCHOOL - HUMBERT STA = 20+343.6, 16.2 m LT
BM* 3010	187.953	CUT "+" IN WEST FLANGE BOLT OF FIRE HYDRANT LOCATED ON EAST SIDE HUMBERT ROAD AND NORTH OF MAILBOX 6415 AT HUMBERT RD (ACROSS FROM CHURCH) - HUMBERT STA = 19+822.2, 11.2 m RT
BM* 3017	188.966	RAILROAD SPIKE IN 12" DIA WALNUT - FAP 310 STA = 38+592.0, 8.7 m RT
BM* 3018	185.947	RAILROAD SPIKE IN 8" DIA TREE - FAP 310 = STA 38+295.5, 0.8 m RT
BM* 3019	175.948	RAILROAD SPIKE IN 12" DIA HICKORY - FAP 310 STA = 37+997.0, 1.0 m LT
BM* 3022	188.010	RAILROAD SPIKE IN POWER POLE LOCATED ON WEST SIDE OF RAILROAD TRACKS BETWEEN RAMP D & FAP 310 - FAP 310 STA = 39+173.5, 27.0 m LT



REVISIONS	
NAME	DATE

ILLINOIS DEPARTMENT OF TRANSPORTATION
 ALIGNMENT & BENCHMARK DATA
 FAP 310 (IL 255)
 SECTIONS 60-15-1, 60-15HB-1
 MADISON COUNTY
 DRAWN BY BGJ
 CHECKED BY
 DATE

p:\00f11es\00024\dhumber-t\deta01smisc\alignmt_bm2b.dgn