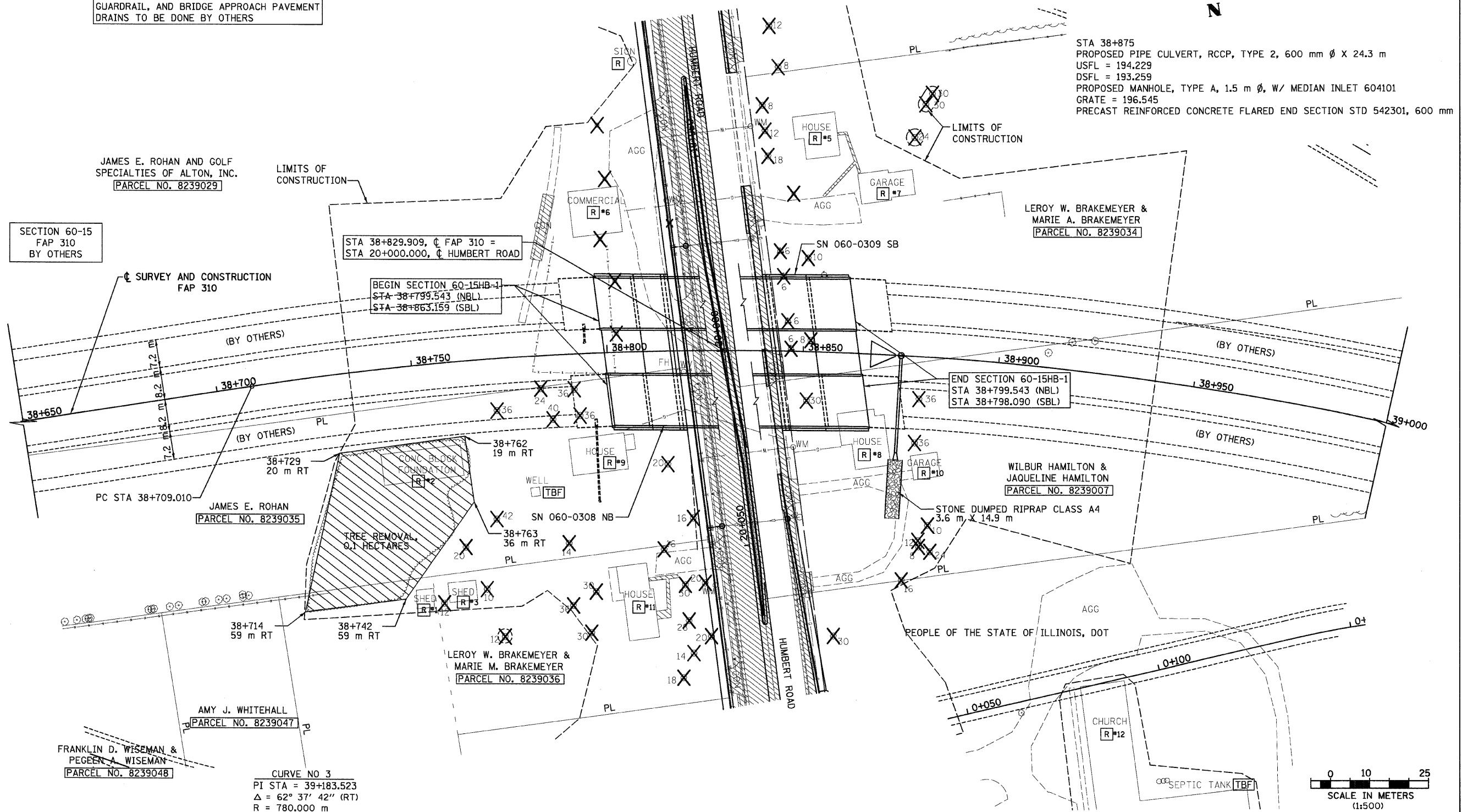


F.A.P. RTE.	SECTION	COUNTY	TOTAL SHEETS	SHEET NO.
310	60-15-1, 60-15HB-1	MADISON	238	29
STA.		TO STA.		
FED. ROAD DIST. NO.		ILLINOIS FED. AID PROJECT		
CONTRACT NO. 76635				



PROPOSED BRIDGE APPROACH PAVEMENTS, GUARDRAIL, AND BRIDGE APPROACH PAVEMENT DRAINS TO BE DONE BY OTHERS



SECTION 60-15  
FAP 310  
BY OTHERS

JAMES E. ROHAN AND GOLF SPECIALTIES OF ALTON, INC.  
[PARCEL NO. 8239029]

STA 38+829.909, C FAP 310 =  
STA 20+000.000, C HUMBERT ROAD

BEGIN SECTION 60-15HB-1  
STA 38+799.543 (NBL)  
STA 38+863.159 (SBL)

END SECTION 60-15HB-1  
STA 38+799.543 (NBL)  
STA 38+798.090 (SBL)

LEROY W. BRAKEMEYER & MARIE A. BRAKEMEYER  
[PARCEL NO. 8239034]

JAMES E. ROHAN  
[PARCEL NO. 8239035]

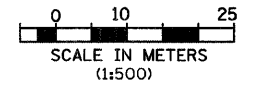
WILBUR HAMILTON & JAQUELINE HAMILTON  
[PARCEL NO. 8239007]

LEROY W. BRAKEMEYER & MARIE M. BRAKEMEYER  
[PARCEL NO. 8239036]

AMY J. WHITEHALL  
[PARCEL NO. 8239047]

FRANKLIN D. WISEMAN & PEGEEN A. WISEMAN  
[PARCEL NO. 8239048]

CURVE NO 3  
PI STA = 39+183.523  
 $\Delta = 62^\circ 37' 42''$  (RT)  
R = 780.000 m  
T = 474.512 m  
L = 852.596 m  
E = 132.996 m  
PC STA = 38+709.010  
PT STA = 39+561.606  
SE = 5.5%  
SE ATTAINED STA 38+649.000 TO STA 38+729.000  
SE REMOVED STA 39+542.000 TO STA 39+622.000



REVISIONS	
NAME	DATE

ILLINOIS DEPARTMENT OF TRANSPORTATION  
PLAN  
FAP 310 (IL 255)  
SECTIONS 60-15-1, 60-15HB-1  
MADISON COUNTY

DRAWN BY  
CHECKED BY  
DATE

IL 255 (FAP 310), STA 38+650 TO STA 39+000

p:\00files\00024\dhumbert\plan\plan015e01.dgn