

10:54:37 AM

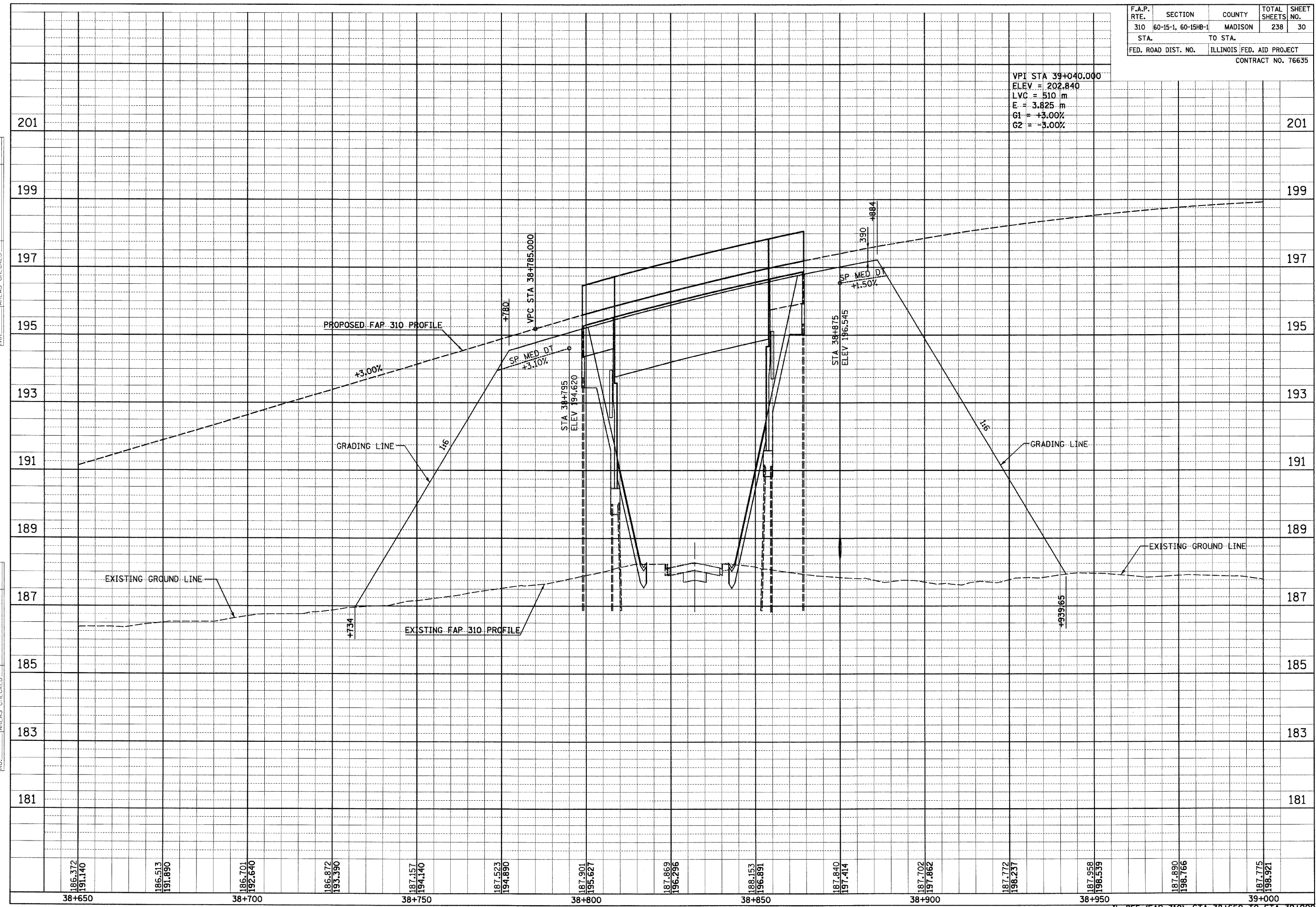
p:\02files\00024\dhumbert\plan\prof\files\prof\1e015e01.dgn

NO.	AREAS CHECKED	DATE	BY

NO.	AREAS CHECKED	DATE	BY

F.A.P. RTE.	SECTION	COUNTY	TOTAL SHEETS	SHEET NO.
310	60-15-1, 60-15HB-1	MADISON	238	30
STA.		TO STA.		
FED. ROAD DIST. NO.		ILLINOIS FED. AID PROJECT		
CONTRACT NO. 76635				

VPI STA 39+040.000
 ELEV = 202.840
 LVC = 510 m
 E = 3.825 m
 G1 = +3.00%
 G2 = -3.00%



IL 255 (FAP 310), STA 38+650 TO STA 39+000