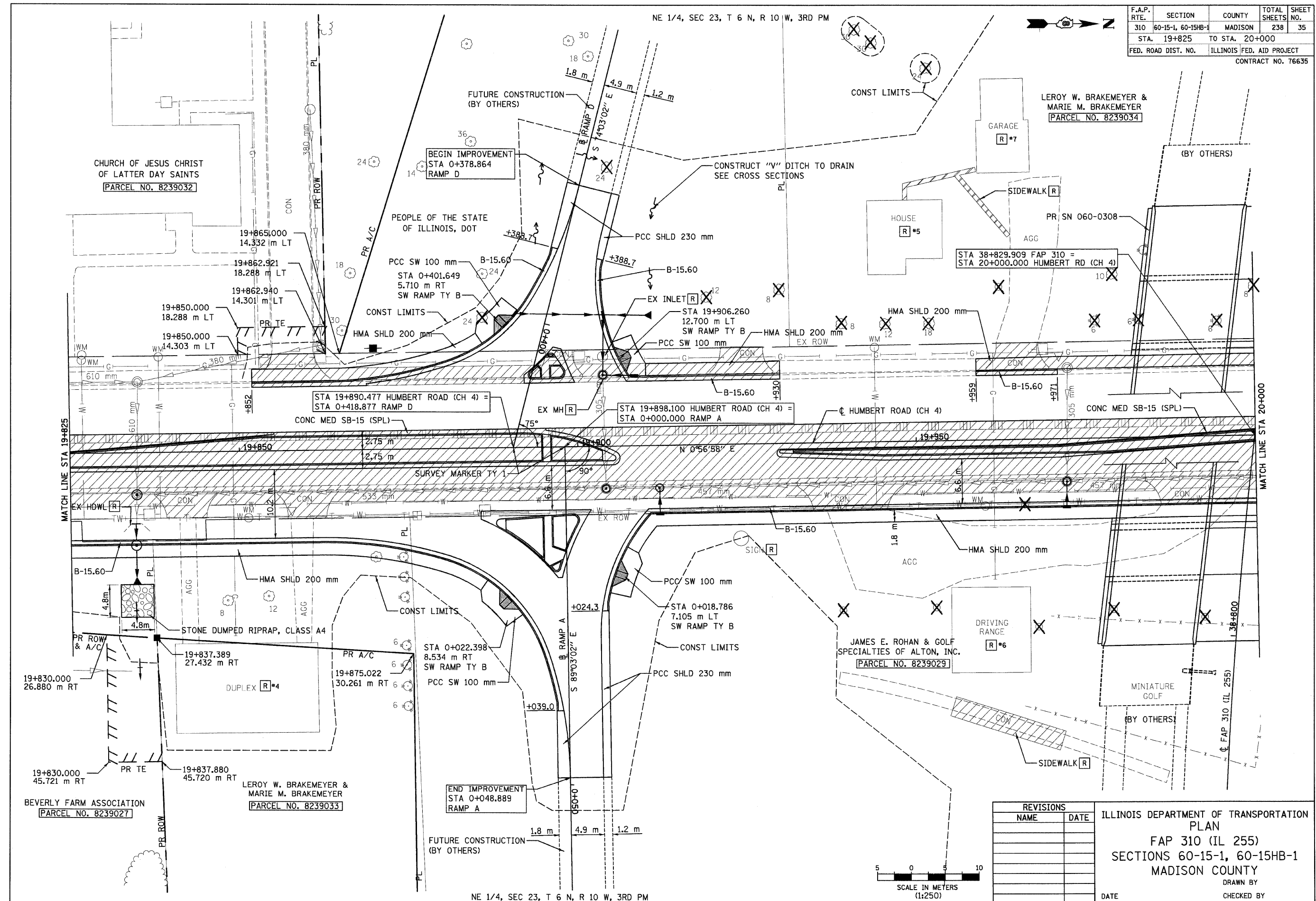


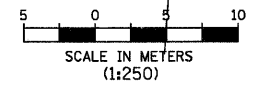
NE 1/4, SEC 23, T 6 N, R 10 W, 3RD PM

F.A.P. RTE.	SECTION	COUNTY	TOTAL SHEETS	SHEET NO.
310	60-15-1, 60-15HB-1	MADISON	238	35
STA. 19+825		TO STA. 20+000		
FED. ROAD DIST. NO.		ILLINOIS FED. AID PROJECT		
CONTRACT NO. 76635				



p:\00f\1es\00224\dhumbert\planprof\1es\plan015b03.dgn

NE 1/4, SEC 23, T 6 N, R 10 W, 3RD PM



REVISIONS	
NAME	DATE

ILLINOIS DEPARTMENT OF TRANSPORTATION
 PLAN
 FAP 310 (IL 255)
 SECTIONS 60-15-1, 60-15HB-1
 MADISON COUNTY
 DRAWN BY
 CHECKED BY
 DATE

HUMBERT ROAD STA 19+825 TO STA 20+000