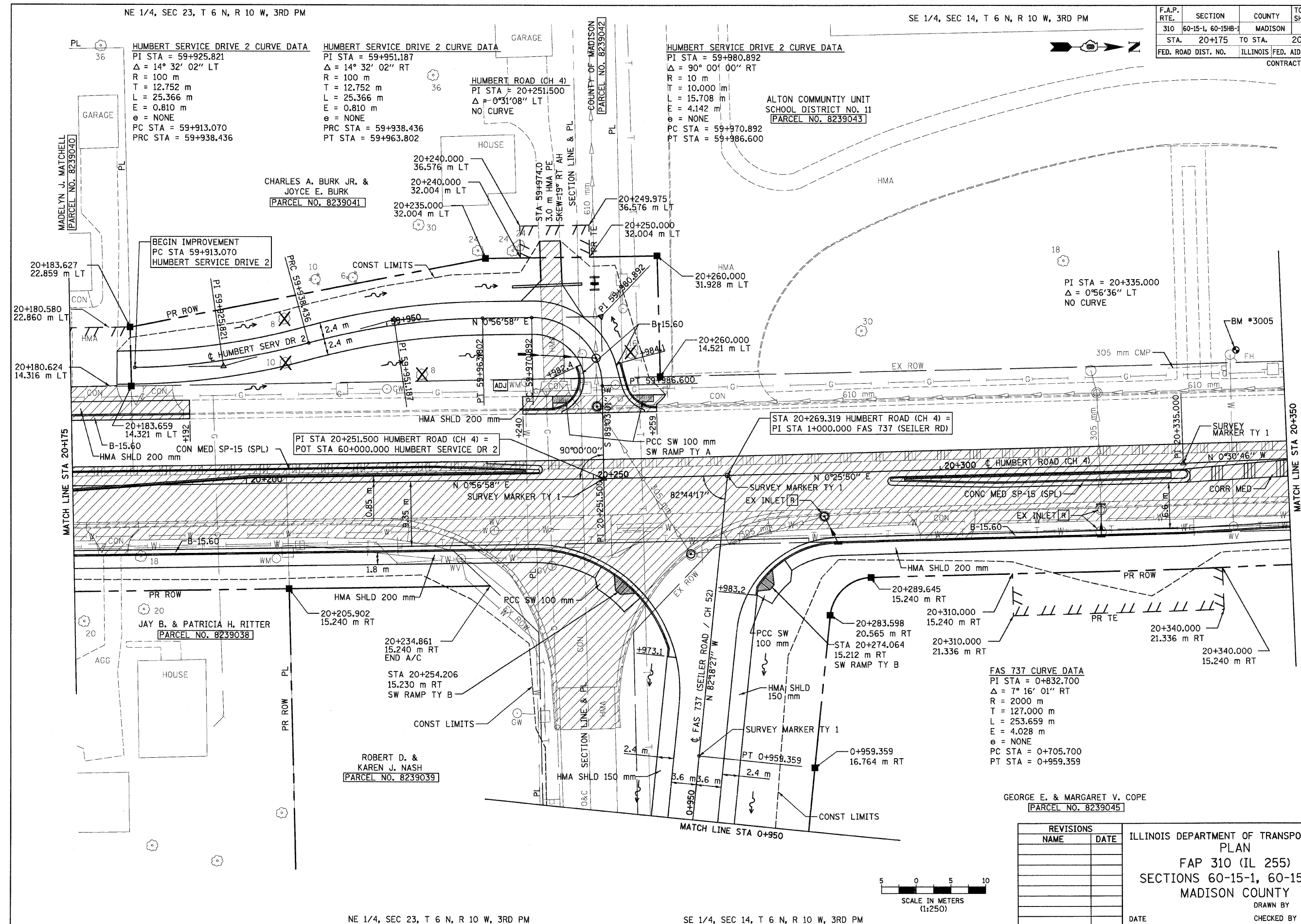


NE 1/4, SEC 23, T 6 N, R 10 W, 3RD PM

SE 1/4, SEC 14, T 6 N, R 10 W, 3RD PM

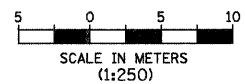
F.A.P. RTE.	SECTION	COUNTY	TOTAL SHEETS	SHEET NO.
310	60-15-1, 60-15HB-1	MADISON	238	39
STA. 20+175		TO STA. 20+350		
FED. ROAD DIST. NO.		ILLINOIS FED. AID PROJECT		
CONTRACT NO. 76635				



p:\00f\1es\02024\dhumbert\planproj\1es\plan\015b05.dgn

NE 1/4, SEC 23, T 6 N, R 10 W, 3RD PM

SE 1/4, SEC 14, T 6 N, R 10 W, 3RD PM



REVISIONS	
NAME	DATE

ILLINOIS DEPARTMENT OF TRANSPORTATION  
 PLAN  
 FAP 310 (IL 255)  
 SECTIONS 60-15-1, 60-15HB-1  
 MADISON COUNTY  
 DRAWN BY  
 CHECKED BY  
 DATE

HUMBERT ROAD STA 20+175 TO STA 20+350