

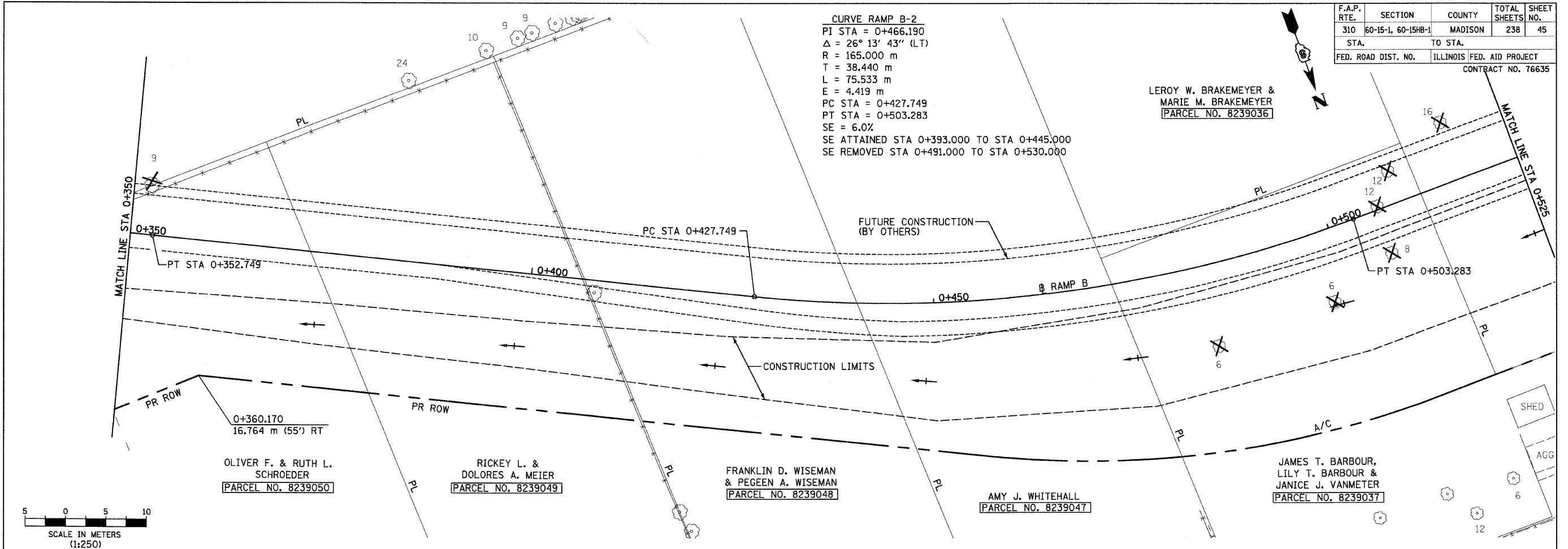
bgj

F.A.P. RTE.	SECTION	COUNTY	TOTAL SHEETS	SHEET NO.
310	60-15-1, 60-15HB-1	MADISON	238	45
STA.		TO STA.		
FED. ROAD DIST. NO.		ILLINOIS FED. AID PROJECT		
		CONTRACT NO. 76635		

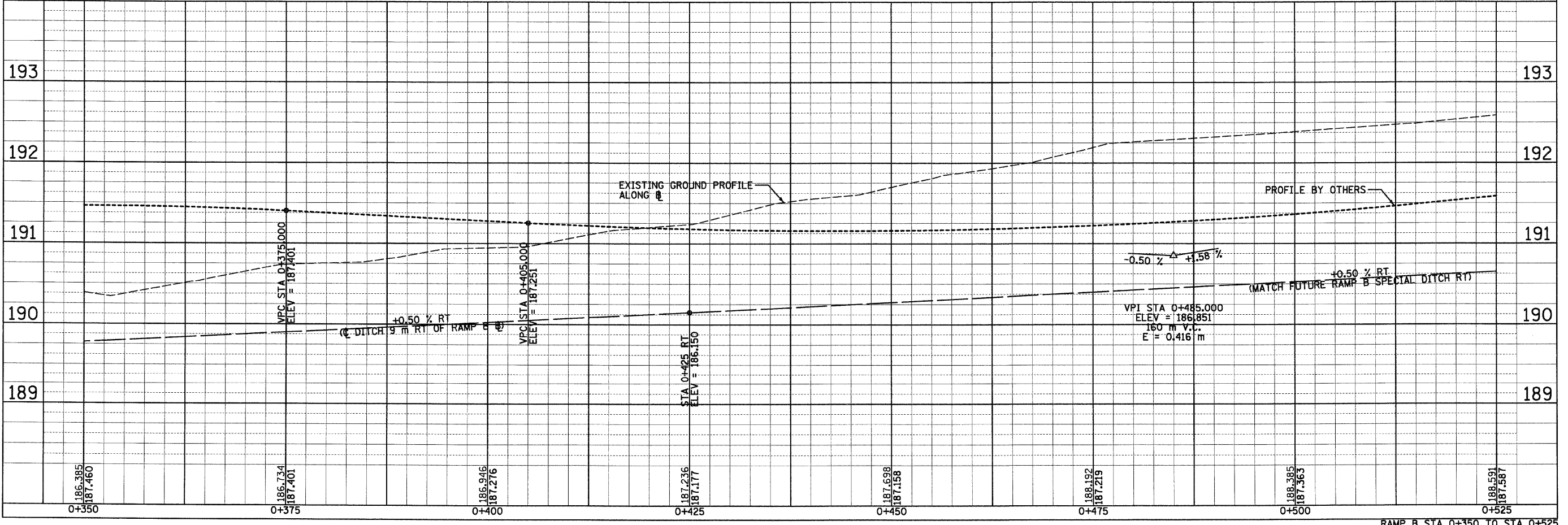
CURVE RAMP B-2
 PI STA = 0+466.190
 $\Delta = 26^\circ 13' 43''$ (LT)
 R = 165.000 m
 T = 38.440 m
 L = 75.533 m
 E = 4.419 m
 PC STA = 0+427.749
 PT STA = 0+503.283
 SE = 6.0%
 SE ATTAINED STA 0+393.000 TO STA 0+445.000
 SE REMOVED STA 0+491.000 TO STA 0+530.000

LEROY W. BRAKEMEYER &
 MARIE M. BRAKEMEYER
 [PARCEL NO. 8239036]

BY	DATE
FINAL SURVEYED	
SURVEY PLOTTED	
NOTE BOOK TEMPLATE	
AREAS	
CHECKED	
NO.	



BY	DATE
ORIGINAL SURVEYED	
SURVEY PLOTTED	
NOTE BOOK TEMPLATE	
AREAS	
CHECKED	
NO.	



p:\200files\0024\dhumber\planprof\files\pp015br-b02.dgn

RAMP B STA 0+350 TO STA 0+525