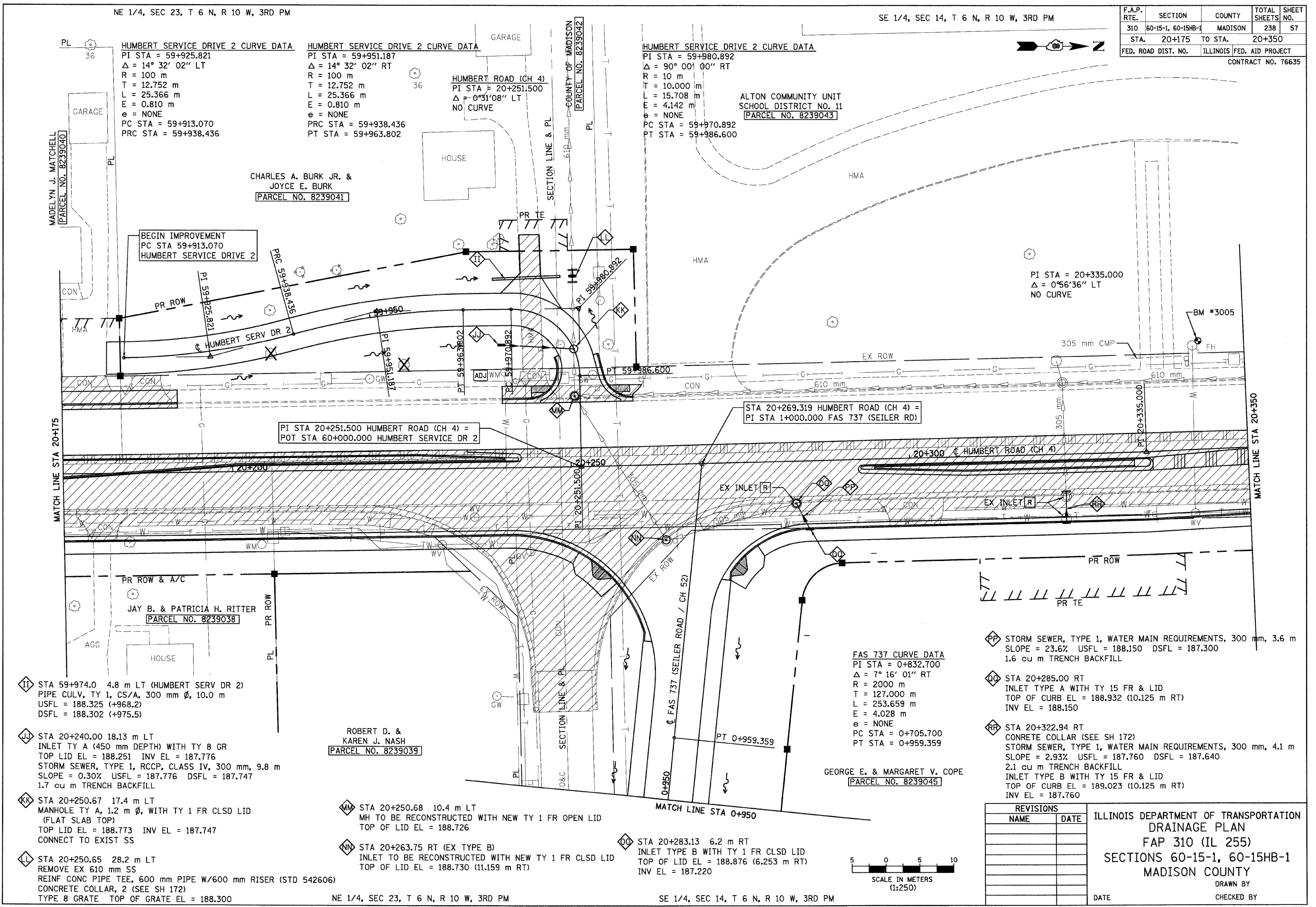


NE 1/4, SEC 23, T 6 N, R 10 W, 3RD PM

SE 1/4, SEC 14, T 6 N, R 10 W, 3RD PM

F.A.P. RTE.	SECTION	COUNTY	TOTAL SHEETS	SHEET NO.
310	60-15-1, 60-15HB-1	MADISON	238	57
STA. 20+175		TO STA. 20+350		
FED. ROAD DIST. NO.		ILLINOIS FED. AID PROJECT		
CONTRACT NO. 76635				



- II STA 59+974.0 4.8 m LT (HUMBERT SERV DR 2)
PIPE CULV, TY 1, CS/A, 300 mm Ø, 10.0 m
USFL = 188.325 (+968.2)
DSFL = 188.302 (+975.5)
- JJ STA 20+240.00 18.13 m LT
INLET TY A (450 mm DEPTH) WITH TY 8 GR
TOP LID EL = 188.251 INV EL = 187.776
STORM SEWER, TYPE 1, RCCP, CLASS IV, 300 mm, 9.8 m
SLOPE = 0.30% USFL = 187.776 DSFL = 187.747
1.7 cu m TRENCH BACKFILL
- KK STA 20+250.67 17.4 m LT
MANHOLE TY A, 1.2 m Ø, WITH TY 1 FR CLSD LID
(FLAT SLAB TOP)
TOP LID EL = 188.773 INV EL = 187.747
CONNECT TO EXIST SS
- LL STA 20+250.65 28.2 m LT
REMOVE EX 610 mm SS
REINF CONC PIPE TEE, 600 mm PIPE W/600 mm RISER (STD 542606)
CONCRETE COLLAR, 2 (SEE SH 172)
TYPE 8 GRATE TOP OF GRATE EL = 188.300

- MM STA 20+250.68 10.4 m LT
MH TO BE RECONSTRUCTED WITH NEW TY 1 FR OPEN LID
TOP OF LID EL = 188.726
- NN STA 20+263.75 RT (EX TYPE B)
INLET TO BE RECONSTRUCTED WITH NEW TY 1 FR CLSD LID
TOP OF LID EL = 188.730 (11.159 m RT)

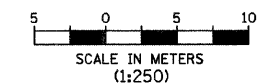
- OO STA 20+283.13 6.2 m RT
INLET TYPE B WITH TY 1 FR CLSD LID
TOP OF LID EL = 188.876 (6.253 m RT)
INV EL = 187.220

FAS 737 CURVE DATA
 PI STA = 0+832.700
 Δ = 7° 16' 01" RT
 R = 2000 m
 T = 127.000 m
 L = 253.659 m
 E = 4.028 m
 e = NONE
 PC STA = 0+705.700
 PT STA = 0+959.359

- PP STORM SEWER, TYPE 1, WATER MAIN REQUIREMENTS, 300 mm, 3.6 m
SLOPE = 23.6% USFL = 188.150 DSFL = 187.300
1.6 cu m TRENCH BACKFILL
- QQ STA 20+285.00 RT
INLET TYPE A WITH TY 15 FR & LID
TOP OF CURB EL = 188.932 (10.125 m RT)
INV EL = 188.150
- RR STA 20+322.94 RT
CONCRETE COLLAR (SEE SH 172)
STORM SEWER, TYPE 1, WATER MAIN REQUIREMENTS, 300 mm, 4.1 m
SLOPE = 2.93% USFL = 187.760 DSFL = 187.640
2.1 cu m TRENCH BACKFILL
INLET TYPE B WITH TY 15 FR & LID
TOP OF CURB EL = 189.023 (10.125 m RT)
INV EL = 187.760

REVISIONS	
NAME	DATE

ILLINOIS DEPARTMENT OF TRANSPORTATION
 DRAINAGE PLAN
 FAP 310 (IL 255)
 SECTIONS 60-15-1, 60-15HB-1
 MADISON COUNTY
 DRAWN BY
 CHECKED BY
 DATE
 HUMBERT ROAD STA 20+175 TO STA 20+350



NE 1/4, SEC 23, T 6 N, R 10 W, 3RD PM

SE 1/4, SEC 14, T 6 N, R 10 W, 3RD PM

p:\2024\files\0024\dhumbert\p1anpr\of\files\drplan\015b\05.dgn