

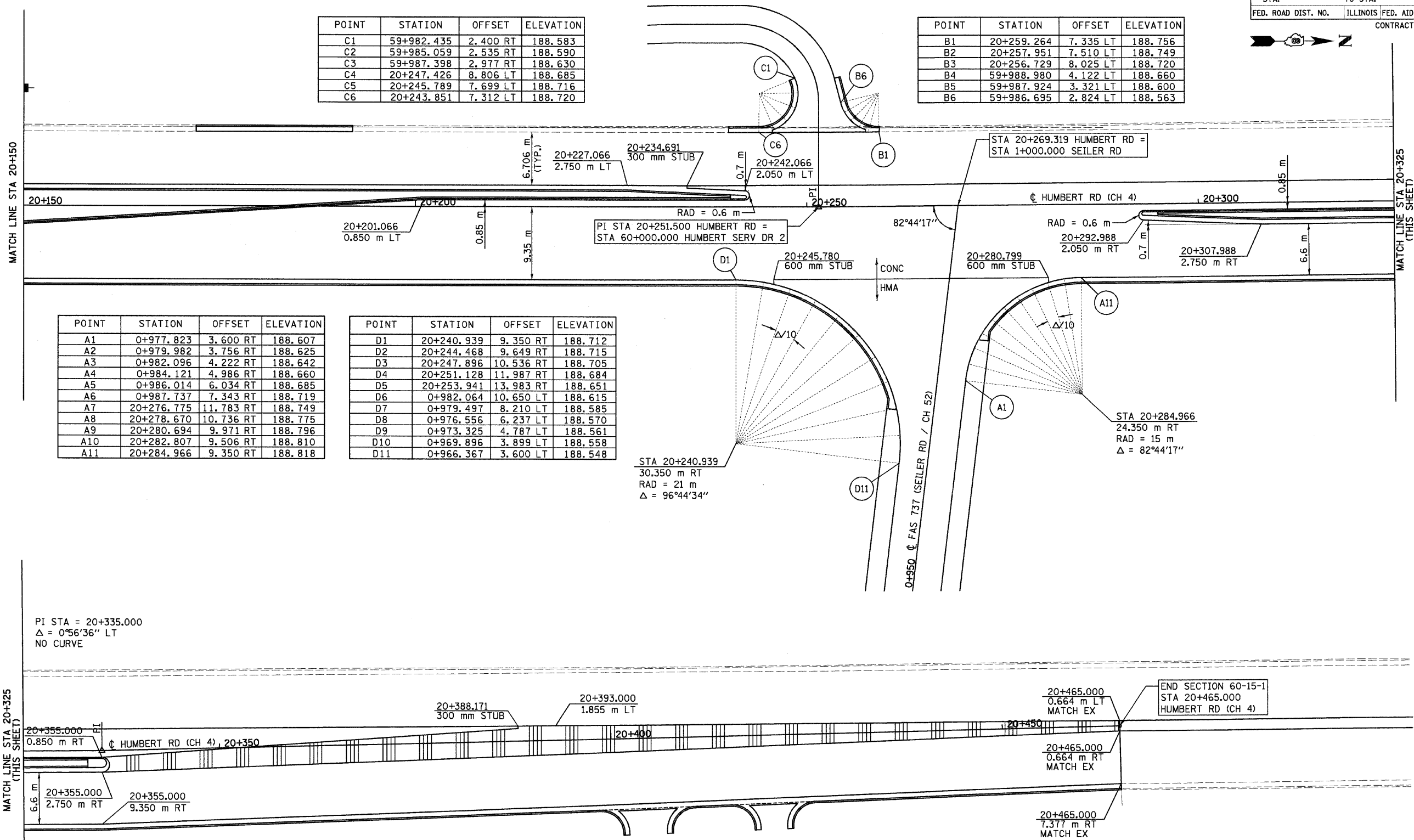
F.A.P. RTE.	SECTION	COUNTY	TOTAL SHEETS	SHEET NO.
310	60-15-1, 60-15HB-1	MADISON	238	85
STA.		TO STA.		
FED. ROAD DIST. NO.		ILLINOIS FED. AID PROJECT		CONTRACT NO. 76635

POINT	STATION	OFFSET	ELEVATION
C1	59+982.435	2.400 RT	188.583
C2	59+985.059	2.535 RT	188.590
C3	59+987.398	2.977 RT	188.630
C4	20+247.426	8.806 LT	188.685
C5	20+245.789	7.699 LT	188.716
C6	20+243.851	7.312 LT	188.720

POINT	STATION	OFFSET	ELEVATION
B1	20+259.264	7.335 LT	188.756
B2	20+257.951	7.510 LT	188.749
B3	20+256.729	8.025 LT	188.720
B4	59+988.980	4.122 LT	188.660
B5	59+987.924	3.321 LT	188.600
B6	59+986.695	2.824 LT	188.563

POINT	STATION	OFFSET	ELEVATION
A1	0+977.823	3.600 RT	188.607
A2	0+979.982	3.756 RT	188.625
A3	0+982.096	4.222 RT	188.642
A4	0+984.121	4.986 RT	188.660
A5	0+986.014	6.034 RT	188.685
A6	0+987.737	7.343 RT	188.719
A7	20+276.775	11.783 RT	188.749
A8	20+278.670	10.736 RT	188.775
A9	20+280.694	9.971 RT	188.796
A10	20+282.807	9.506 RT	188.810
A11	20+284.966	9.350 RT	188.818

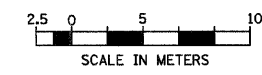
POINT	STATION	OFFSET	ELEVATION
D1	20+240.939	9.350 RT	188.712
D2	20+244.468	9.649 RT	188.715
D3	20+247.896	10.536 RT	188.705
D4	20+251.128	11.987 RT	188.684
D5	20+253.941	13.983 RT	188.651
D6	0+982.064	10.650 LT	188.615
D7	0+979.497	8.210 LT	188.585
D8	0+976.556	6.237 LT	188.570
D9	0+973.325	4.787 LT	188.561
D10	0+969.896	3.899 LT	188.558
D11	0+966.367	3.600 LT	188.548



PI STA = 20+335.000
 $\Delta = 0^{\circ}56'36''$ LT
 NO CURVE

END SECTION 60-15-1
 STA 20+465.000
 HUMBERT RD (CH 4)

STATIONS, OFFSETS, AND ELEVATIONS ARE FOR ULTIMATE PAVING
 FOR PLAN AND PROFILE OF HUMBERT AND SEILER ROADS SEE SHEET 39



REVISIONS	
NAME	DATE

SEILER ROAD
 ILLINOIS DEPARTMENT OF TRANSPORTATION
 INTERSECTION DETAILS
 FAP 310 (IL 255)
 SECTIONS 60-15-1, 60-15HB-1
 MADISON COUNTY
 DRAWN BY
 CHECKED BY
 DATE

p:\20f\iles\00224\dhumbert\detail\amisc\intdet\15b-seiler.dgn