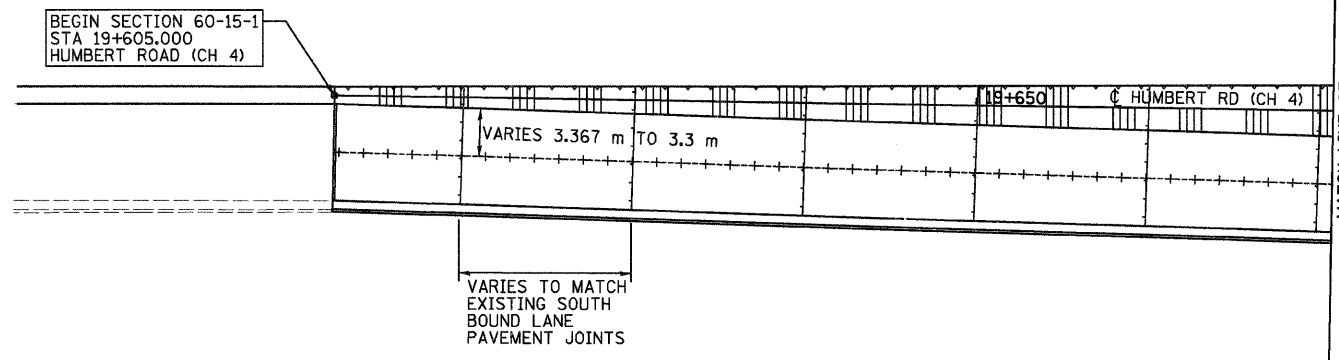


F.A.P. RTE.	SECTION	COUNTY	TOTAL SHEETS	SHEET NO.
310	60-15-1, 60-15HB-1	MADISON	238	86
STA.		TO STA.		
FED. ROAD DIST. NO.		ILLINOIS FED. AID PROJECT		
CONTRACT NO. 76635				

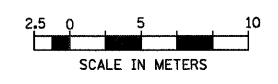
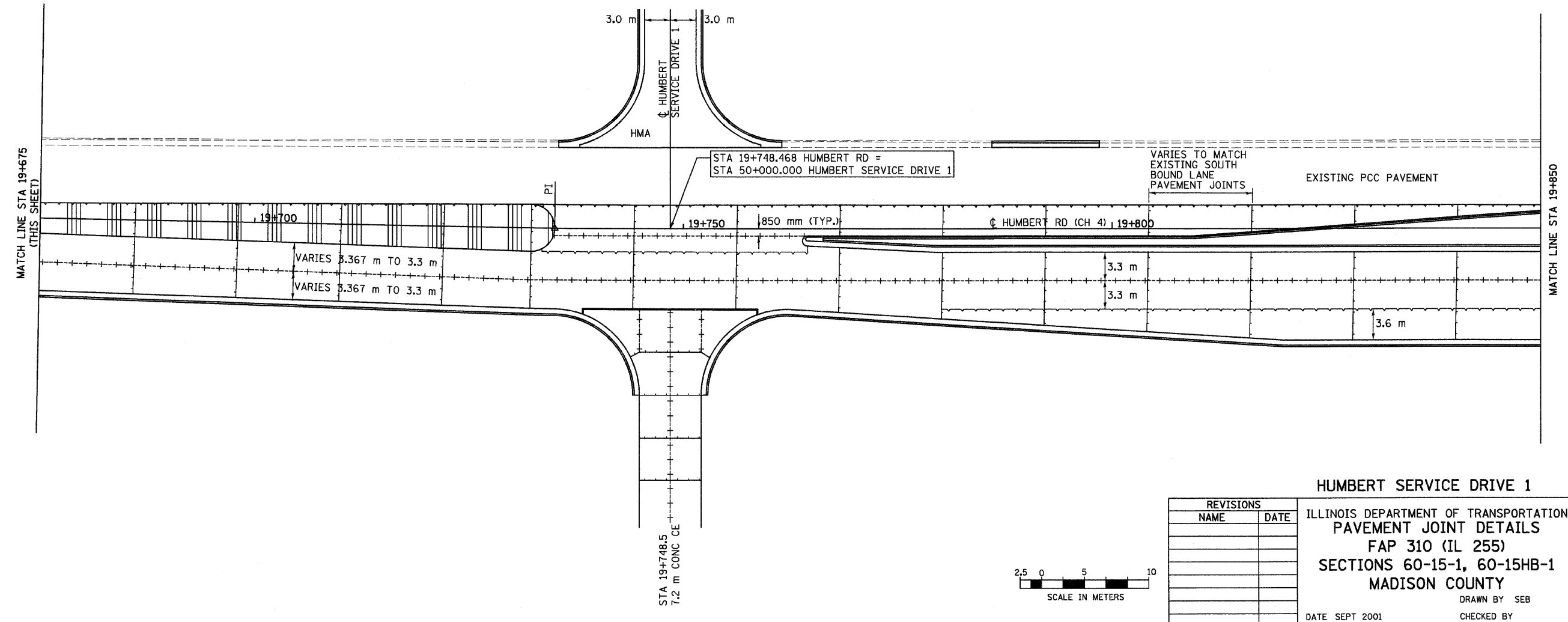


**PAVEMENT JOINT LEGEND**

- EXPANSION JOINT
  - SAWED LONGITUDINAL
  - TIED LONGITUDINAL CONSTRUCTION
  - SAWED CONTRACTION
- SEE STANDARDS 420001 & 420106 FOR DETAILS



PI STA = 19+735.000  
 $\Delta = 0^{\circ}56'36''$  LT  
 NO CURVE



REVISIONS	
NAME	DATE

**HUMBERT SERVICE DRIVE 1**

ILLINOIS DEPARTMENT OF TRANSPORTATION  
 PAVEMENT JOINT DETAILS  
 FAP 310 (IL 255)  
 SECTIONS 60-15-1, 60-15HB-1  
 MADISON COUNTY

DATE SEPT 2001

DRAWN BY SEB  
 CHECKED BY

p:\00f\105\000224\dhumbert\detail\smisc\p\det\015b-sd1.dgn