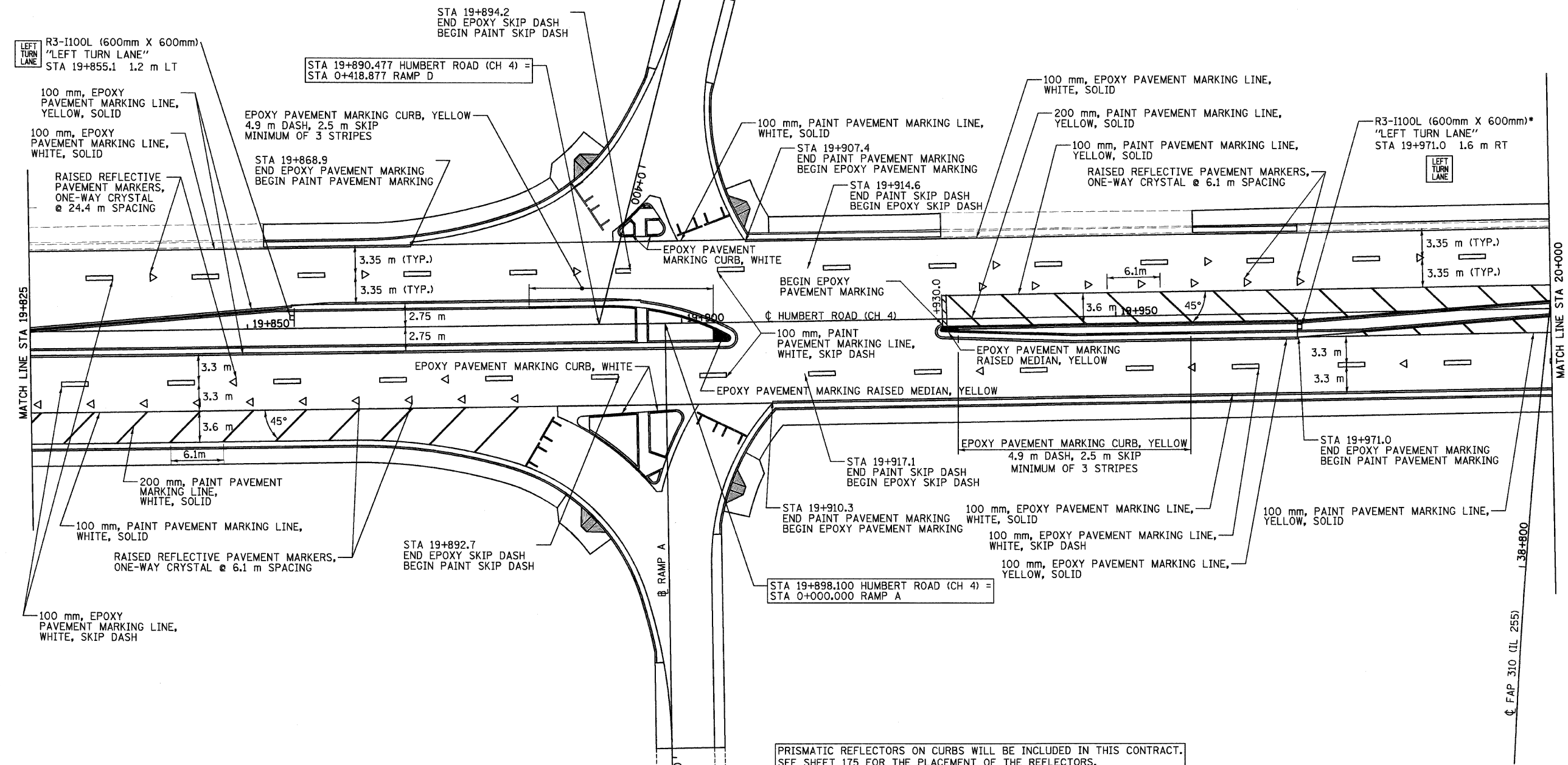
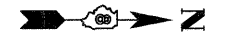


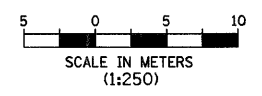
F.A.P. RTE.	SECTION	COUNTY	TOTAL SHEETS	SHEET NO.
310	60-15-1, 60-15HB-1	MADISON	238	92
STA.		TO STA.		
FED. ROAD DIST. NO.		ILLINOIS FED. AID PROJECT		
CONTRACT NO. 76635				

LEGEND

- ▷ ONE-WAY CRYSTAL RAISED REFLECTIVE PAVEMENT MARKER
- TT TYPE III BARRICADE (WITH ONE R11-2-4830 "ROAD CLOSED" PER LOCATION)
- STA ↶ EPOXY PAVEMENT MARKING, WHITE, LEFT TURN ARROW (LARGE SIZE)
- STA ↷ EPOXY PAVEMENT MARKING, WHITE, RIGHT TURN ARROW (LARGE SIZE)
- ==== 600 mm, EPOXY PAVEMENT MARKING LINE, WHITE, SOLID
- - COVER OR TURN AWAY FROM ONCOMING TRAFFIC



PRISMATIC REFLECTORS ON CURBS WILL BE INCLUDED IN THIS CONTRACT. SEE SHEET 175 FOR THE PLACEMENT OF THE REFLECTORS.



REVISIONS	
NAME	DATE

ILLINOIS DEPARTMENT OF TRANSPORTATION
PAVEMENT MARKINGS
 FAP 310 (IL 255)
 SECTIONS 60-15-1, 60-15HB-1
 MADISON COUNTY

DATE _____ DRAWN BY _____
 CHECKED BY _____

HUMBERT ROAD STA 19+825 TO STA 20+000

p:\00f.iles\00024\dhumber-t\pvm\marks\pvm\015b03.dgn