

F.A.P. RTE.	SECTION	COUNTY	TOTAL SHEETS	SHEET NO.
310	60-15-1, 60-15HB-1	MADISON	238	98
STA.		TO STA.		
FED. ROAD DIST. NO.		ILLINOIS FED. AID PROJECT		
CONTRACT NO. 76635				

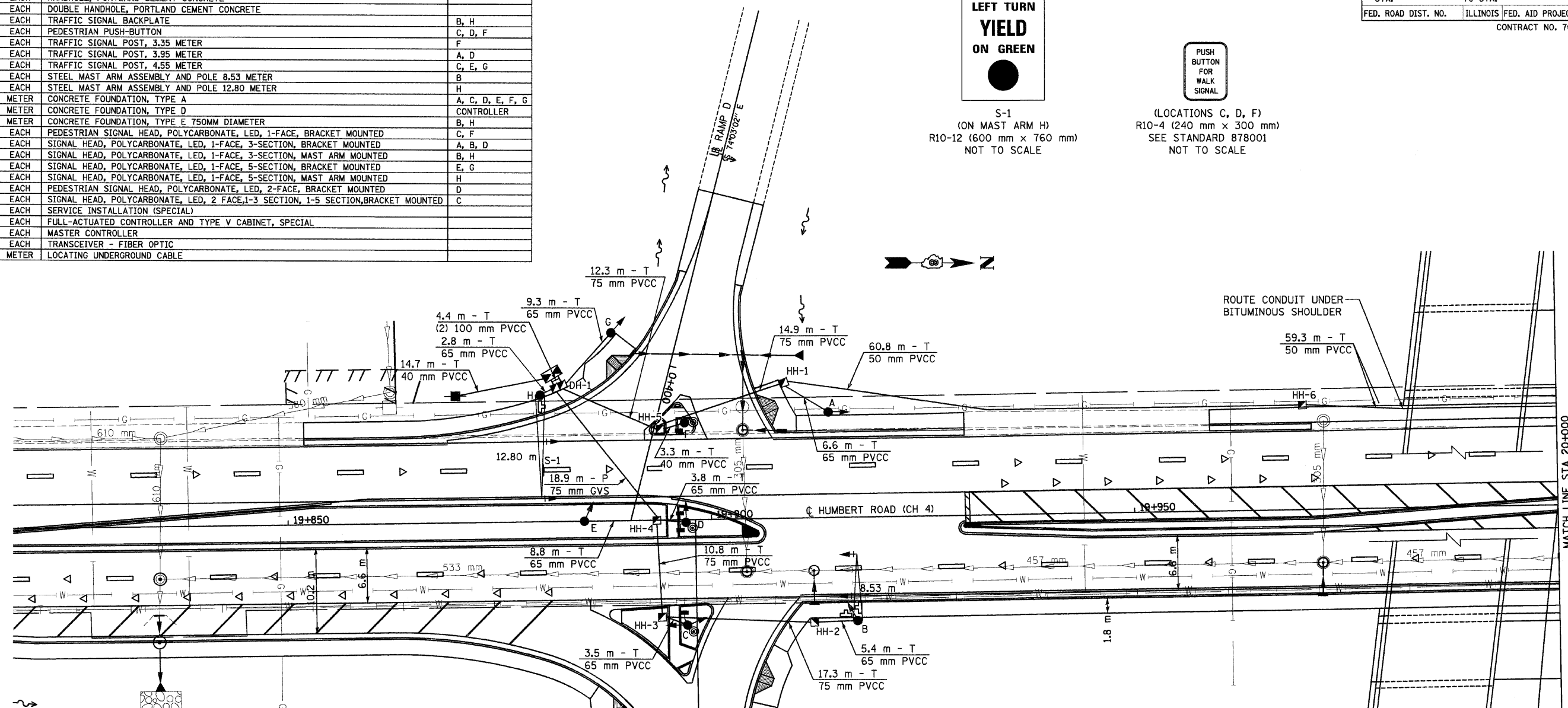
TRAFFIC SIGNAL QUANTITIES - RAMPS A & D INTERSECTION			
QTY	UNIT	ITEM	LOCATION
6	EACH	HANDHOLE, PORTLAND CEMENT CONCRETE	
1	EACH	DOUBLE HANDHOLE, PORTLAND CEMENT CONCRETE	
4	EACH	TRAFFIC SIGNAL BACKPLATE	B, H
3	EACH	PEDESTRIAN PUSH-BUTTON	C, D, F
1	EACH	TRAFFIC SIGNAL POST, 3.35 METER	F
2	EACH	TRAFFIC SIGNAL POST, 3.95 METER	A, D
3	EACH	TRAFFIC SIGNAL POST, 4.55 METER	C, E, G
1	EACH	STEEL MAST ARM ASSEMBLY AND POLE 8.53 METER	B
1	EACH	STEEL MAST ARM ASSEMBLY AND POLE 12.80 METER	H
5.4	METER	CONCRETE FOUNDATION, TYPE A	A, C, D, E, F, G
0.9	METER	CONCRETE FOUNDATION, TYPE D	CONTROLLER
7.3	METER	CONCRETE FOUNDATION, TYPE E 750MM DIAMETER	B, H
2	EACH	PEDESTRIAN SIGNAL HEAD, POLYCARBONATE, LED, 1-FACE, BRACKET MOUNTED	C, F
3	EACH	SIGNAL HEAD, POLYCARBONATE, LED, 1-FACE, 3-SECTION, BRACKET MOUNTED	A, B, D
3	EACH	SIGNAL HEAD, POLYCARBONATE, LED, 1-FACE, 3-SECTION, MAST ARM MOUNTED	B, H
2	EACH	SIGNAL HEAD, POLYCARBONATE, LED, 1-FACE, 5-SECTION, BRACKET MOUNTED	E, G
1	EACH	SIGNAL HEAD, POLYCARBONATE, LED, 1-FACE, 5-SECTION, MAST ARM MOUNTED	H
1	EACH	PEDESTRIAN SIGNAL HEAD, POLYCARBONATE, LED, 2-FACE, BRACKET MOUNTED	D
1	EACH	SIGNAL HEAD, POLYCARBONATE, LED, 2 FACE, 1-3 SECTION, 1-5 SECTION, BRACKET MOUNTED	C
1	EACH	SERVICE INSTALLATION (SPECIAL)	
1	EACH	FULL-ACTUATED CONTROLLER AND TYPE V CABINET, SPECIAL	
1	EACH	MASTER CONTROLLER	
1	EACH	TRANSCIVER - FIBER OPTIC	
61	METER	LOCATING UNDERGROUND CABLE	



S-1  
(ON MAST ARM H)  
R10-12 (600 mm x 760 mm)  
NOT TO SCALE



(LOCATIONS C, D, F)  
R10-4 (240 mm x 300 mm)  
SEE STANDARD 878001  
NOT TO SCALE

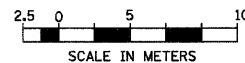


CONDUIT LOCATION SUMMARY							
LOCATION	40 mm T-PVCC	50 mm T-PVCC	65 mm T-PVCC	75 mm T-PVCC	75 mm P-GVS	100 mm T-PVCC	TRENCH & BACKFILL
SIGNAL "A" to HH-1			6.6				6.6
HH-1 to HH-5				14.9			14.9
MAST ARM "B" to HH-2			5.4				5.4
HH-2 to HH-3				17.3			17.3
SIGNAL "C" to HH-3			3.5				3.5
HH-3 to HH-4				10.8			10.8
SIGNAL "D" to HH-4			3.8				3.8
SIGNAL "E" to HH-4			8.8				8.8
HH-4 to DH-1					18.9		18.9
SIGNAL "F" to HH-5	3.3						3.3
HH-5 to DH-1				12.3			12.3
SIGNAL "G" to DH-1			9.3				9.3
MAST ARM "H" to DH-1			2.8				2.8
DH-1 to CONTROLLER						4.4	4.4
SERVICE TO CONTROLLER	14.7						14.7
HH-1 to HH-6		60.8					60.8
HH-6 to 20+030		59.3					59.3
<b>TOTAL</b>	<b>18.0</b>	<b>120.1</b>	<b>40.2</b>	<b>55.3</b>	<b>18.9</b>	<b>4.4</b>	<b>238.0</b>

STRUCTURE LOCATION		
ITEM	LOCATION	
CONTROLLER	19+881.4	17.5 LT
SERVICE	19+870.0	15.0 LT
A	19+914.0	12.5 LT
B	19+917.1	12.3 RT
C	19+897.0	12.5 RT
D	19+897.0	0.3 RT
E	19+885.0	0.0 RT
F	19+897.0	11.5 LT
G	19+888.5	22.3 LT
H	19+880.0	15.0 LT
HH-1	19+908.8	16.1 LT
HH-2	19+912.0	12.4 RT
HH-3	19+894.0	11.5 RT
HH-4	19+894.0	0.0 RT
HH-5	19+894.1	10.8 LT
HH-6	19+970.0	12.5 LT
DH-1	19+882.2	16.0 LT

CABLE LOCATION SUMMARY							
ITEM TO CONTROLLER	#6 2/C	#14 2/C	#14 3/C	#14 5/C	#14 7/C	#18 6PR	FO 62.5/125 4F
SERVICE	17.7						
POST A				50.4			
MAST ARM B				231.2		172.2	
POST C		48.1	50.1	50.1	50.1		
POST D		34.9	73.8	36.9			
POST E					42.0		
POST F		27.5	29.5				
POST G					20.3		
MAST ARM H				21.2	27.9	21.7	
RAMPS B & C CONTROLLER							249.4
<b>TOTAL</b>	<b>17.7</b>	<b>110.5</b>	<b>153.4</b>	<b>389.8</b>	<b>140.3</b>	<b>193.9</b>	<b>249.4</b>

REVISIONS	
NAME	DATE



ILLINOIS DEPARTMENT OF TRANSPORTATION  
TRAFFIC SIGNAL PLAN  
FAP 310 (IL 255)  
SECTIONS 60-15-1, 60-15HB-1  
MADISON COUNTY

DATE \_\_\_\_\_ DRAWN BY \_\_\_\_\_  
CHECKED BY \_\_\_\_\_

HUMBERT ROAD AND RAMPS A & D INTERSECTION

p:\02f\1es\02024\dhumbert\sig\015b.dgn