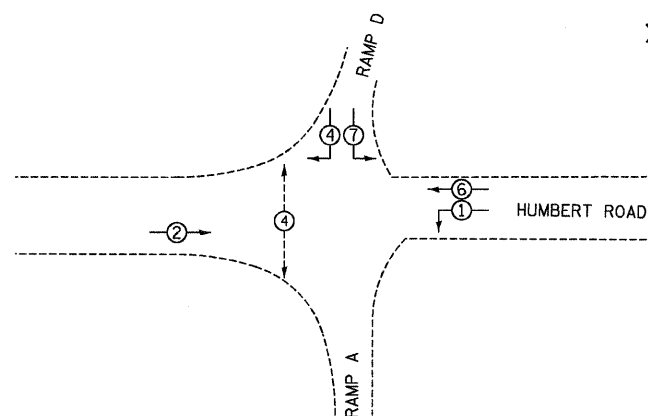


F.A.P. RTE.	SECTION	COUNTY	TOTAL SHEETS	SHEET NO.
310	60-15-1, 60-15HB-1	MADISON	238	99
STA.	TO STA.			
FED. ROAD DIST. NO.	ILLINOIS	FED. AID PROJECT		
CONTRACT NO. 76635				

CABLE DIAGRAM LEGEND

- ELECTRIC CABLE IN CONDUIT
- 5/C INDICATES NUMBER OF CONDUCTORS IN CABLE
- SERVICE INSTALLATION
- #6 INDICATES AMERICAN WIRE GAUGE (AWG) SIZE 6 CONDUCTORS (SEE GENERAL NOTES)
- ⊙ PROPOSED PEDESTRIAN PUSH BUTTON
- ⊙ PROPOSED PEDESTRIAN SIGNAL HEAD
- ⊕ VIDEO CAMERA

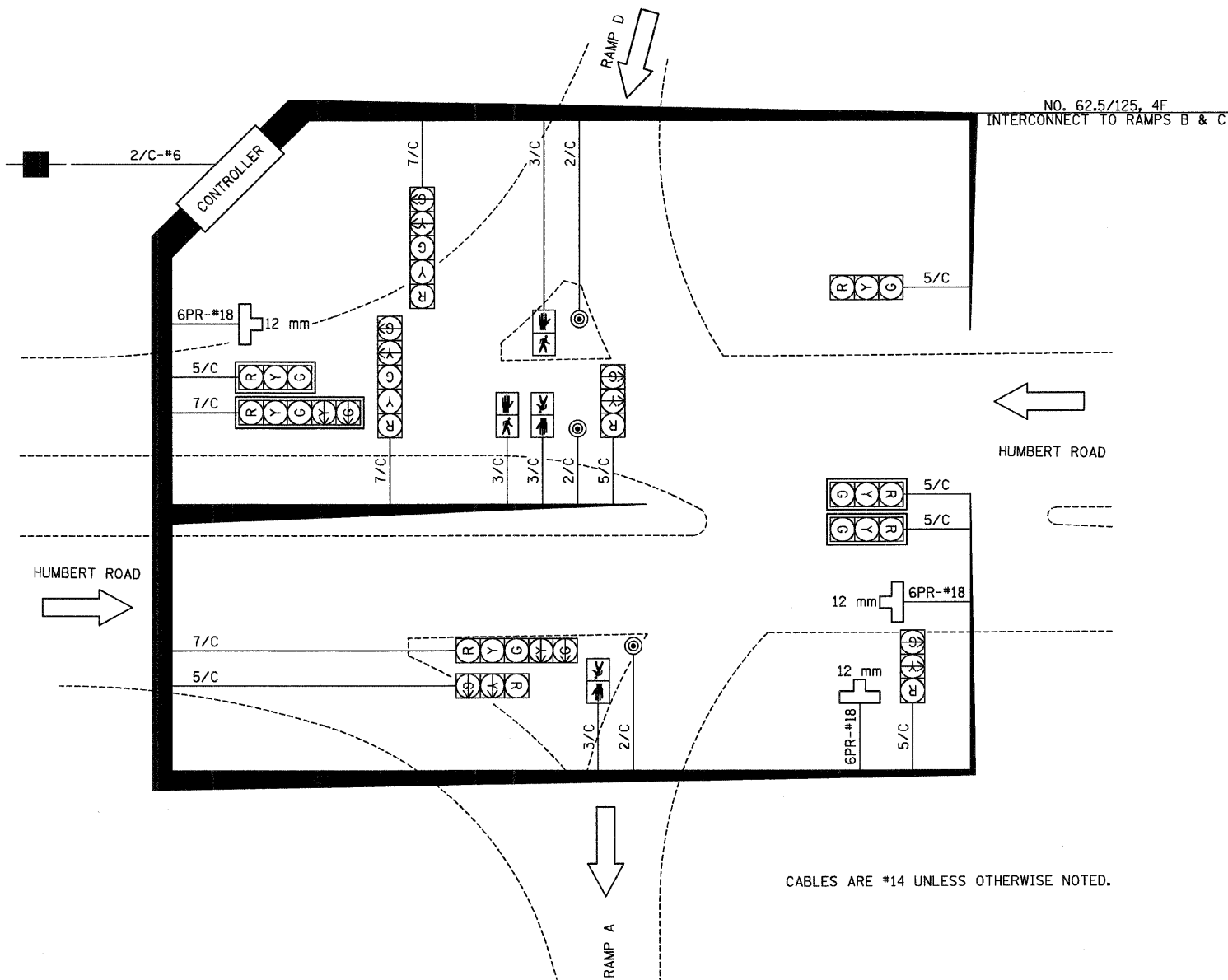


PHASE DESIGNATION DIAGRAM

FULL-ACTUATED CONTROLLER SEQUENCE
8 PHASES, IN TYPE IV CABINET

PROPOSED SEQUENCE OF OPERATION								
PHASE Ø	1	2	3	4	5	6	7	8
MOVEMENT	↙	→	—	↕	—	←	↘	—
CONCURRENT MOVEMENT PERMITTED	6	6	NOT USED	7	NOT USED	1 OR 2	4	NOT USED

• - PEDESTRIAN INTERVALS SHALL BE PUSHBUTTON ACTIVATED



CABLES ARE #14 UNLESS OTHERWISE NOTED.

LUMINARE LEGEND

- A. LUMINARE, SODIUM VAPOR, MULTI-MOUNT 250 WATT, 2 EACH MOUNTED ON 2-WAY BULLHORN, POST TOP MOUNT
- B. LUMINARE, SODIUM VAPOR, MULTI-MOUNT 250 WATT, 2 EACH MOUNTED ON 2-WAY BULLHORN, POST TOP MOUNT

REVISIONS	
NAME	DATE

ILLINOIS DEPARTMENT OF TRANSPORTATION
CABLE DIAGRAM
 FAP 310 (IL 255)
 SECTIONS 60-15-1, 60-15HB-1
 MADISON COUNTY
 DRAWN BY
 CHECKED BY

DATE
 HUMBERT ROAD AND RAMPS A & D INTERSECTION