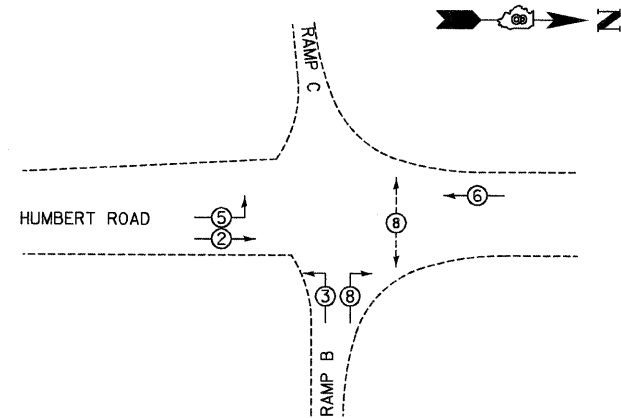


CABLE DIAGRAM LEGEND

- ELECTRIC CABLE IN CONDUIT
- 5/C INDICATES NUMBER OF CONDUCTORS IN CABLE
- SERVICE INSTALLATION
- *6 INDICATES AMERICAN WIRE GAUGE (AWG) SIZE 6 CONDUCTORS (SEE GENERAL NOTES)
- ⊙ PROPOSED PEDESTRIAN PUSH BUTTON
- ⊙ PROPOSED PEDESTRIAN SIGNAL HEAD
- ⊕ VIDEO CAMERA



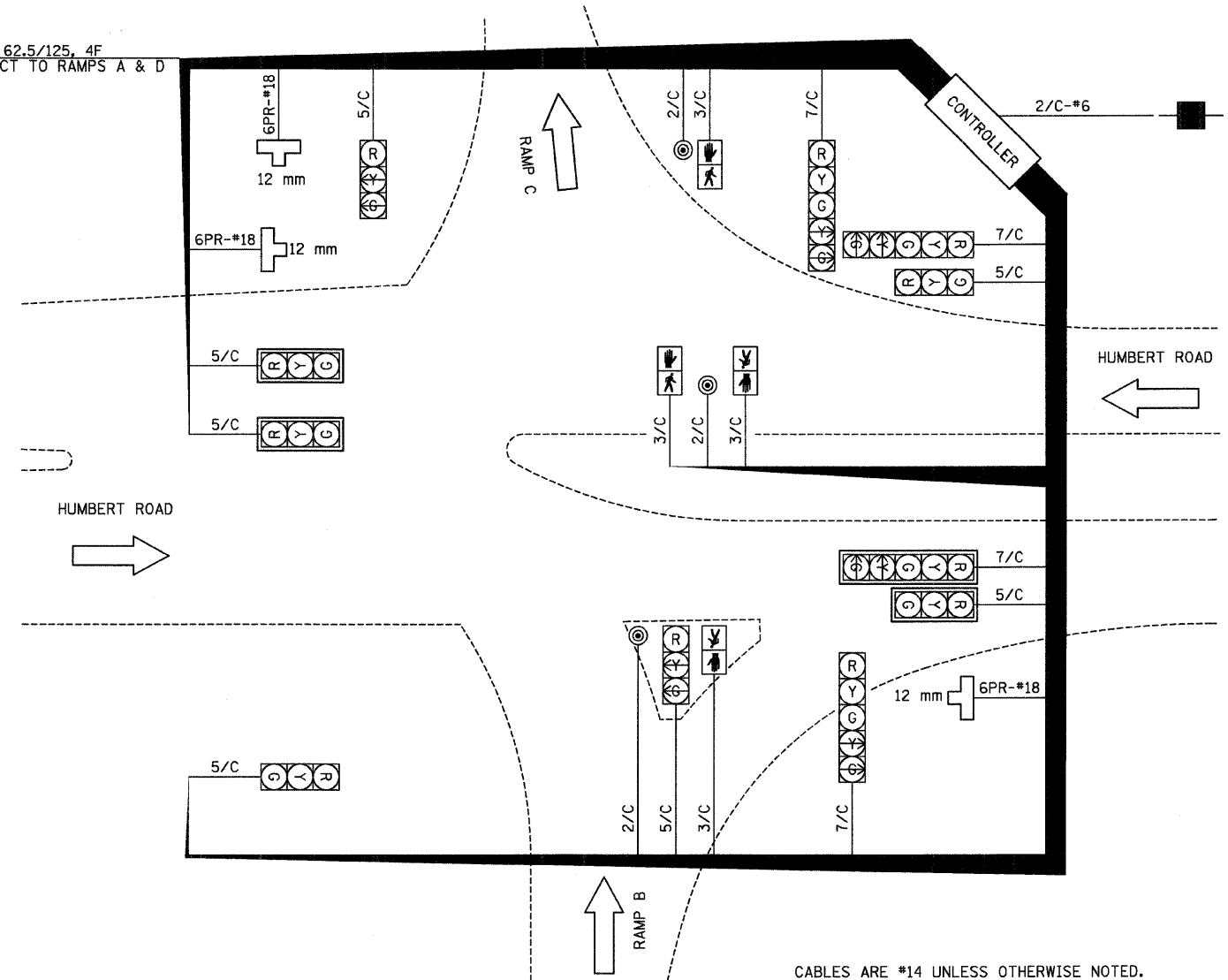
PHASE DESIGNATION DIAGRAM

**FULL-ACTUATED CONTROLLER SEQUENCE
8 PHASES, IN TYPE IV CABINET**

PROPOSED SEQUENCE OF OPERATION								
PHASE ϕ	1	2	3	4	5	6	7	8
MOVEMENT	—	→	↕	—	↖	←	—	↗
CONCURRENT MOVEMENT PERMITTED	NOT USED	5 OR 6	8	NOT USED	2	2	NOT USED	3

• - PEDESTRIAN INTERVAL SHALL BE PUSHBUTTON ACTIVATED

NO. 62.5/125, 4F
INTERCONNECT TO RAMPS A & D



CABLES ARE #14 UNLESS OTHERWISE NOTED.

LUMINARE LEGEND

- A. LUMINARE, SODIUM VAPOR, MULTI-MOUNT 250 WATT, 2 EACH MOUNTED ON 2-WAY BULLHORN, POST TOP MOUNT
- B. LUMINARE, SODIUM VAPOR, MULTI-MOUNT 250 WATT, 2 EACH MOUNTED ON 2-WAY BULLHORN, POST TOP MOUNT

REVISIONS	
NAME	DATE

ILLINOIS DEPARTMENT OF TRANSPORTATION
CABLE DIAGRAM
FAP 310 (IL 255)
SECTIONS 60-15-1, 60-15HB-1
MADISON COUNTY

DRAWN BY
CHECKED BY

DATE

HUMBERT ROAD AND RAMPS B & C INTERSECTION