

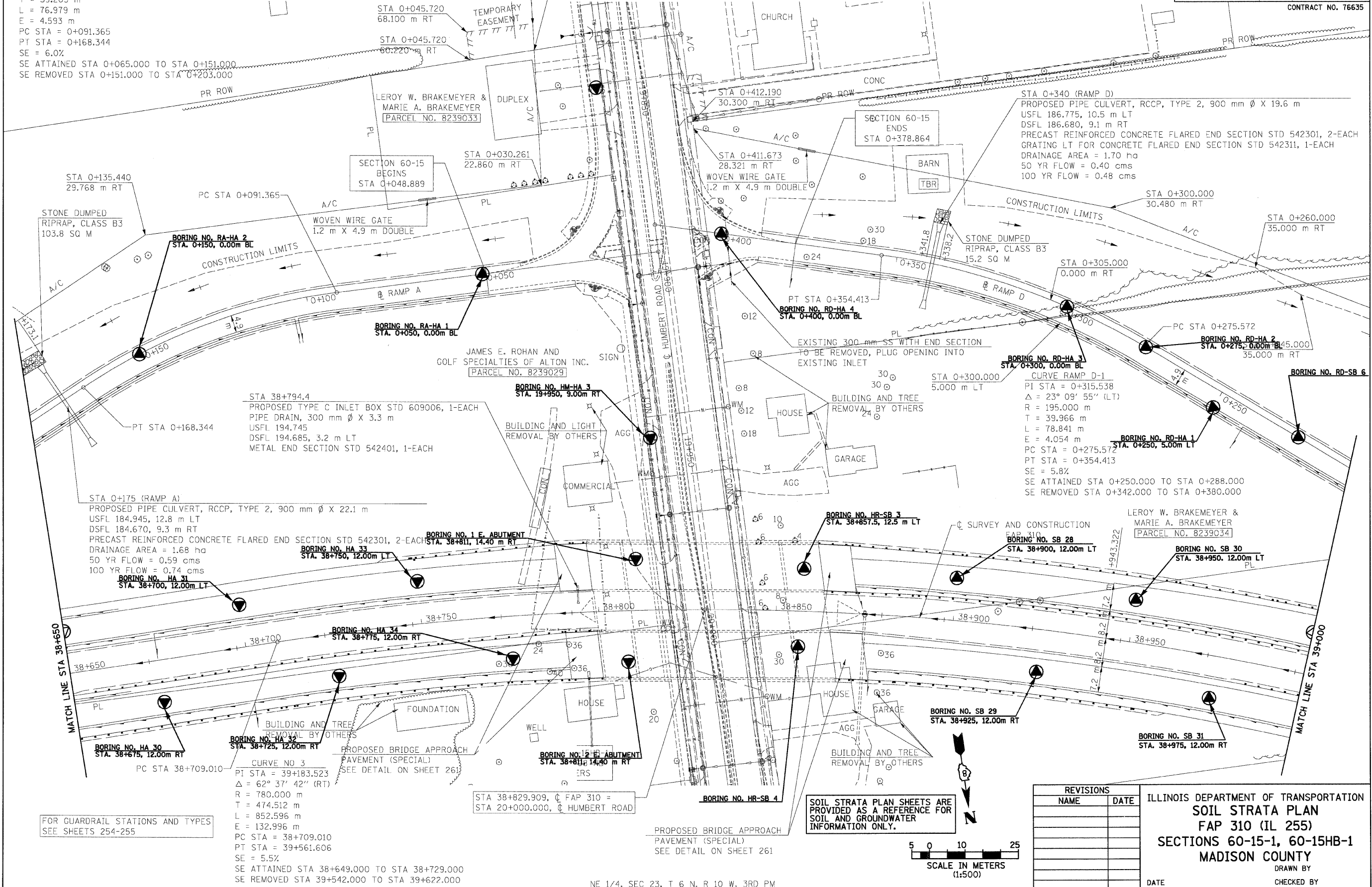
CURVE RAMP A-1
 PI STA = 0+130.568
 $\Delta = 26^\circ 43' 51''$ (LT)
 R = 165.000 m
 T = 39.203 m
 L = 76.979 m
 E = 4.593 m
 PC STA = 0+091.365
 PT STA = 0+168.344
 SE = 6.0%
 SE ATTAINED STA 0+065.000 TO STA 0+151.000
 SE REMOVED STA 0+151.000 TO STA 0+203.000

FOR ENTRANCE RAMP A TERMINAL DETAILS AND PROFILE SEE SHEETS 80 & 151-152

FOR EXIT RAMP D TERMINAL DETAILS AND PROFILE SEE SHEETS 83 & 157-158

BUILDINGS, TREES, AND OTHER ITEMS ALONG HUMBERT ROAD SHALL BE REMOVED BY OTHERS IN SECTION 60-15HB-1. ITEMS TO BE REMOVED UNDER THIS CONTRACT ARE LABELLED AS SUCH

F.A.P. RTE.	SECTION	COUNTY	TOTAL SHEETS	SHEET NO.
310	60-15-1, 60-15HB-1	MADISON	238	109
STA.		TO STA.		
FED. ROAD DIST. NO.		ILLINOIS FED. AID PROJECT		
		CONTRACT NO. 76635		



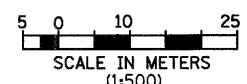
FOR GUARDRAIL STATIONS AND TYPES SEE SHEETS 254-255

CURVE NO 3
 PI STA = 39+183.523
 $\Delta = 62^\circ 37' 42''$ (RT)
 R = 780.000 m
 T = 474.512 m
 L = 852.596 m
 E = 132.996 m
 PC STA = 38+709.010
 PT STA = 39+561.606
 SE = 5.5%
 SE ATTAINED STA 38+649.000 TO STA 38+729.000
 SE REMOVED STA 39+542.000 TO STA 39+622.000

STA 38+829.909, \odot FAP 310 = STA 20+000.000, \odot HUMBERT ROAD

PROPOSED BRIDGE APPROACH PAVEMENT (SPECIAL) SEE DETAIL ON SHEET 261

SOIL STRATA PLAN SHEETS ARE PROVIDED AS A REFERENCE FOR SOIL AND GROUNDWATER INFORMATION ONLY.



REVISIONS	
NAME	DATE

ILLINOIS DEPARTMENT OF TRANSPORTATION
SOIL STRATA PLAN
 FAP 310 (IL 255)
 SECTIONS 60-15-1, 60-15HB-1
 MADISON COUNTY

DATE _____ DRAWN BY _____
 CHECKED BY _____
 IL 255 (FAP 310), STA 38+650 TO STA 39+000

p:\02f\les\00224\dhumbert\soilstrata\ssplen015a11.dgn