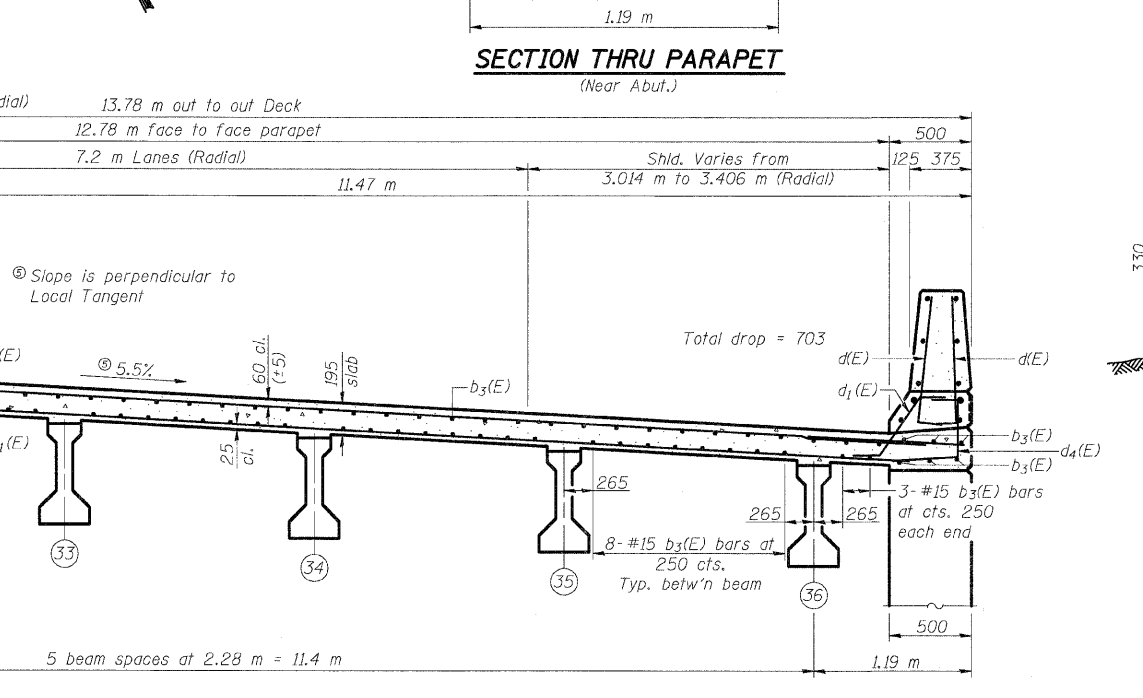
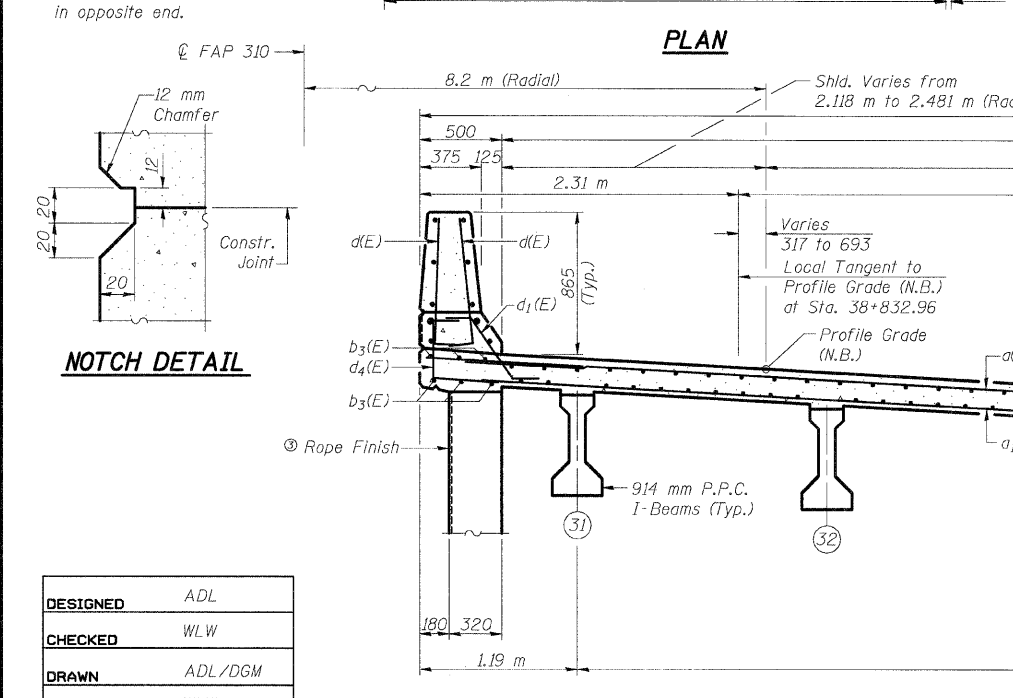
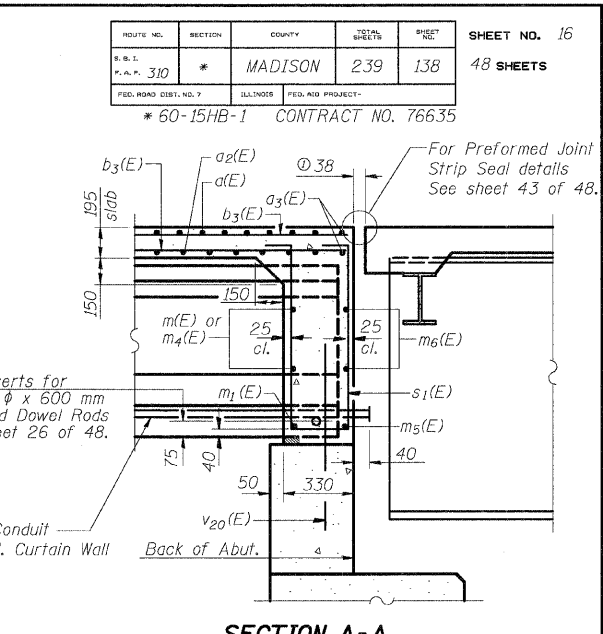
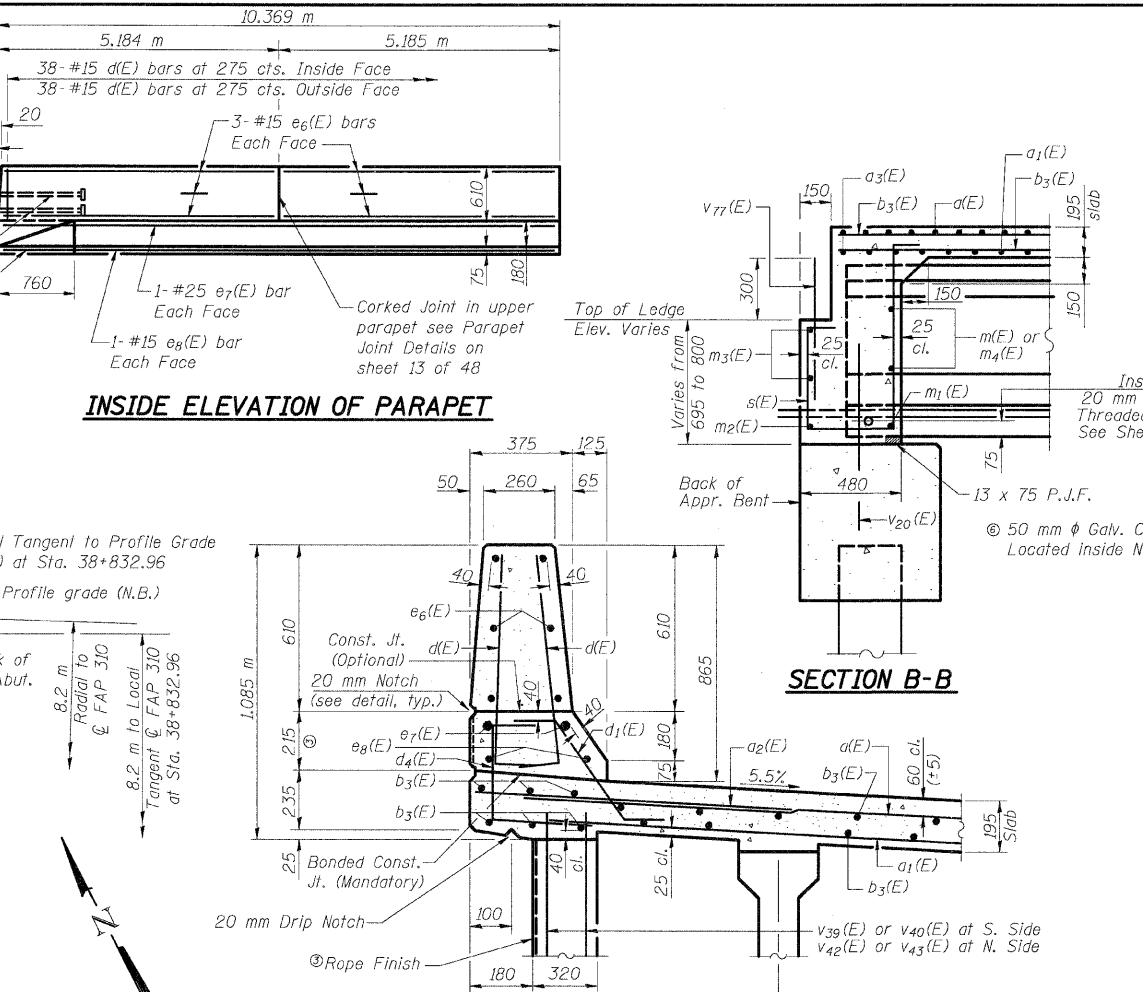
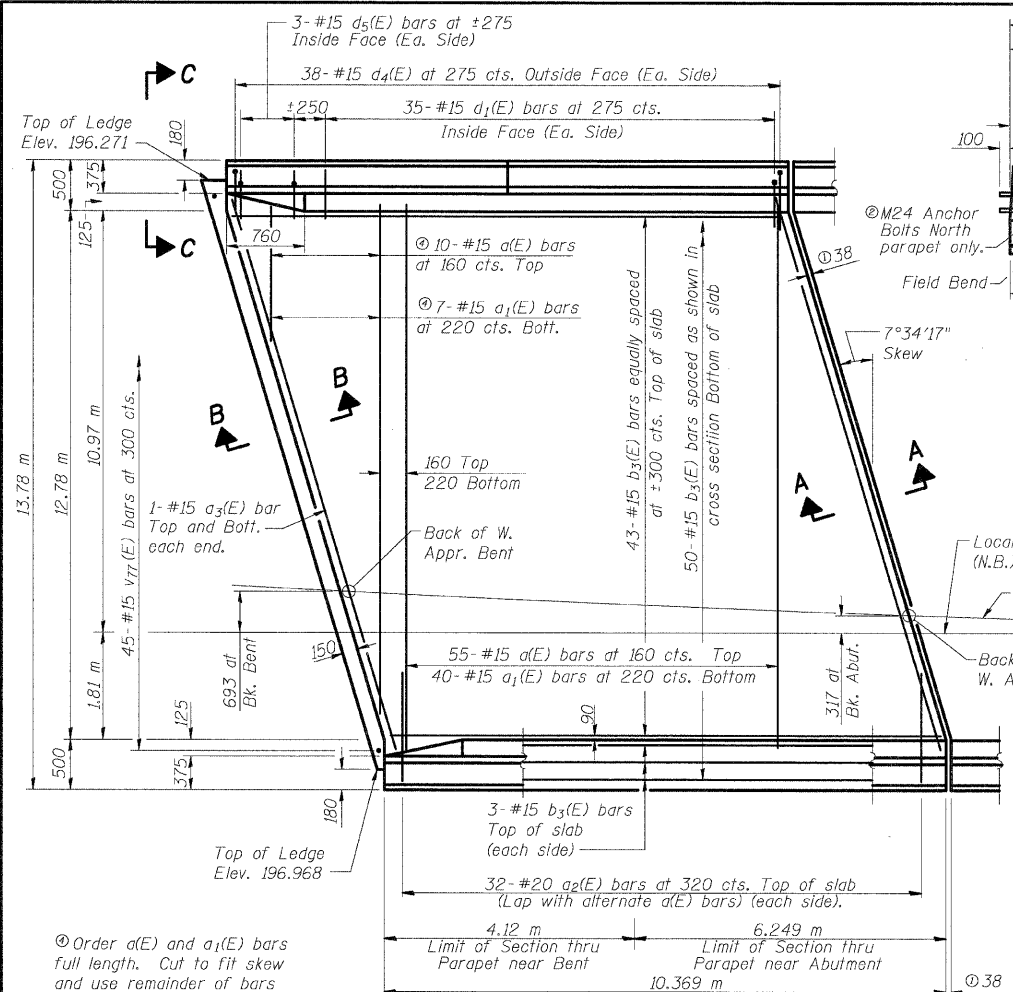


12/10/2007 12:01:35 PM
 p:\2007\les\002024\humber\bridge\bridge.plans\060-0308\approach\abs.dgn

ROUTE NO.	SECTION	COUNTY	TOTAL SHEETS	SHEET NO.
310	*	MADISON	239	138
SHEET NO. 16				
48 SHEETS				
* 60-15HB-1 CONTRACT NO. 76635				



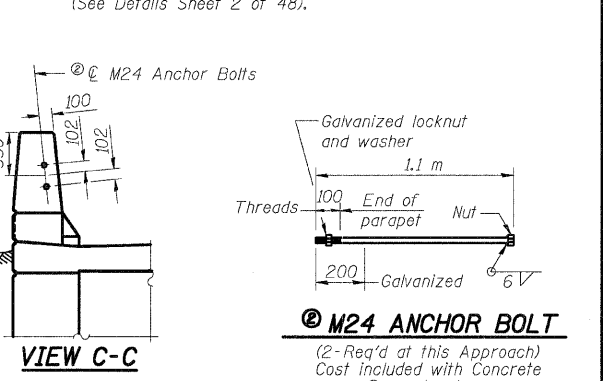
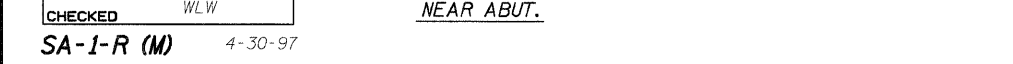
Notes: See Sheets 32, 33, and 34 of 48 for v20(E), v39(E), v40(E), v42(E) and v43(E) bars. Work this sheet with sheet 17 of 48.

① Dimensions are based on a Rolled Rail Strip Seal Joint. If the contractor elects to use the Welded Rail Strip Seal Joint, deck dimensions may require adjustments to satisfy the details on Sheet 43 of 48.

② M24 Anchor bolts at North Parapet only.

③ Patterned Rope Texture Concrete. See Sheet 42 of 48 for details.

④ 50 mm ϕ Galvanized Conduit (Sch. 40 pipe) shall conform to the requirements ANSI C 80.1 or UL 1242. Thread and cap each end. Cost included with "Concrete Superstructure". (See Details Sheet 2 of 48).



DESIGNED	ADL
CHECKED	WLW
DRAWN	ADL/DGM
CHECKED	WLW

N.B. WEST APPROACH SLAB (1 OF 2)
FAP RTE. 310 (IL RTE. 255) OVER
CH ROUTE 4 (HUMBERT ROAD)
SECTION 60-15HB-1
MADISON COUNTY
STATION 38+829.909
SN 060-0308 (NB) & 060-0309 (SB)

Klingner & Assoc., P.C.