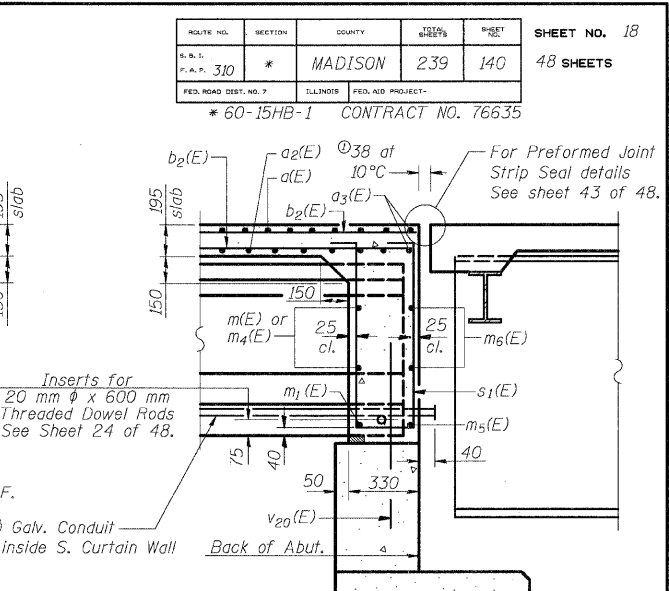
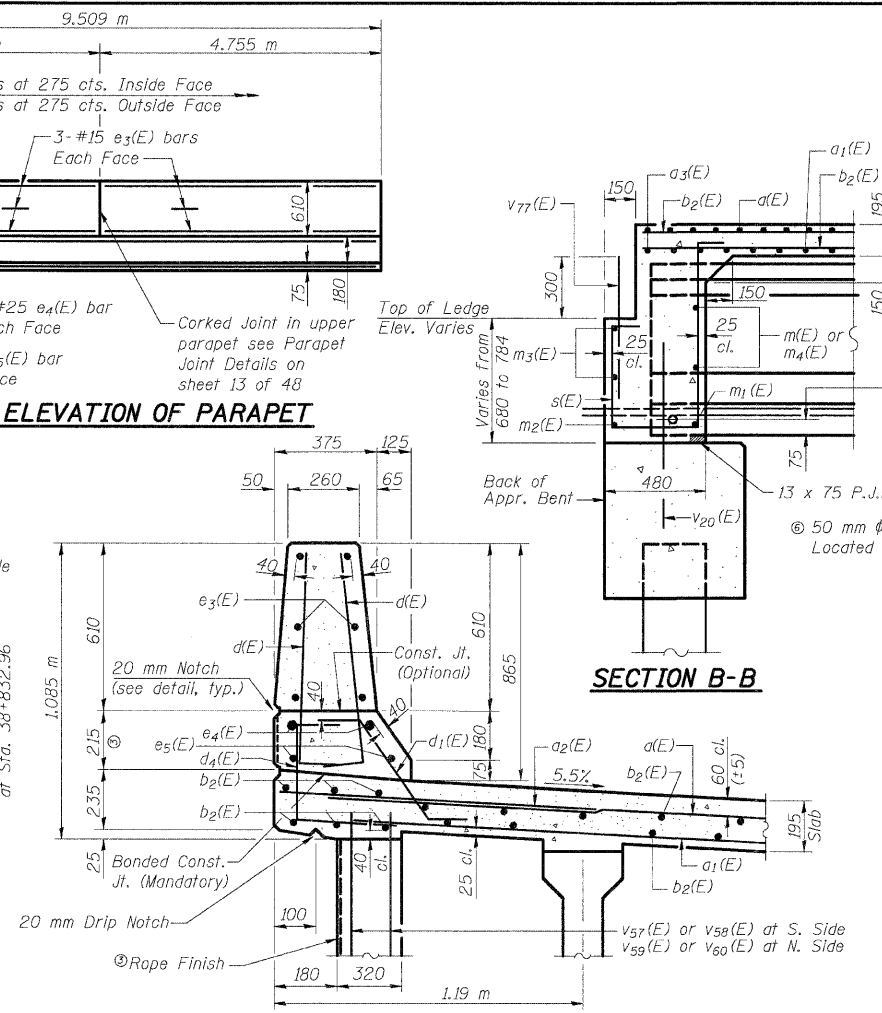
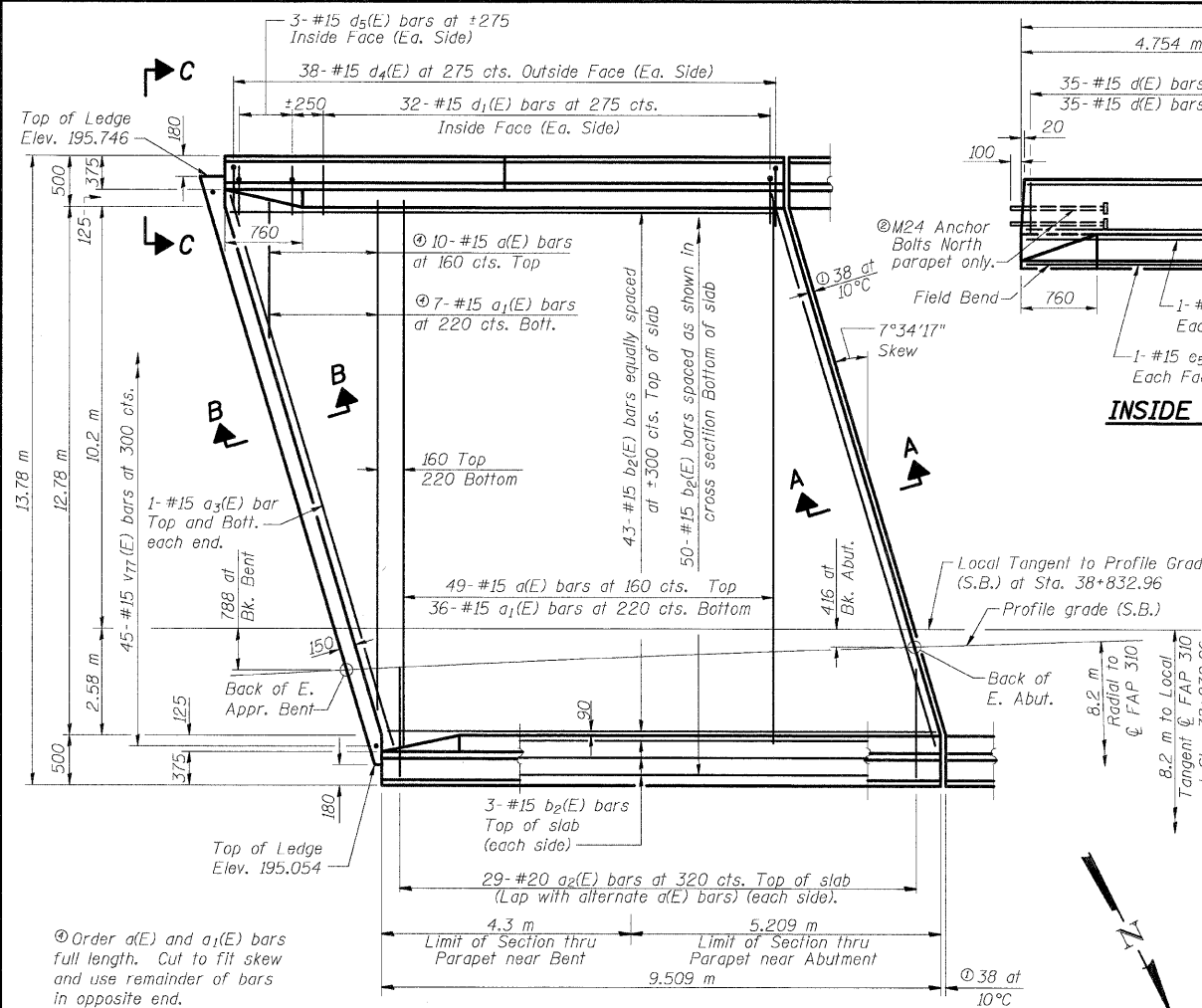


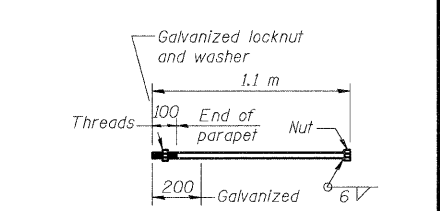
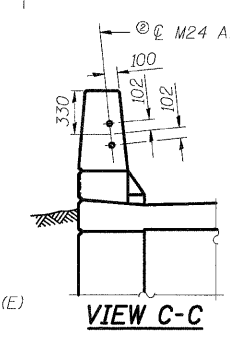
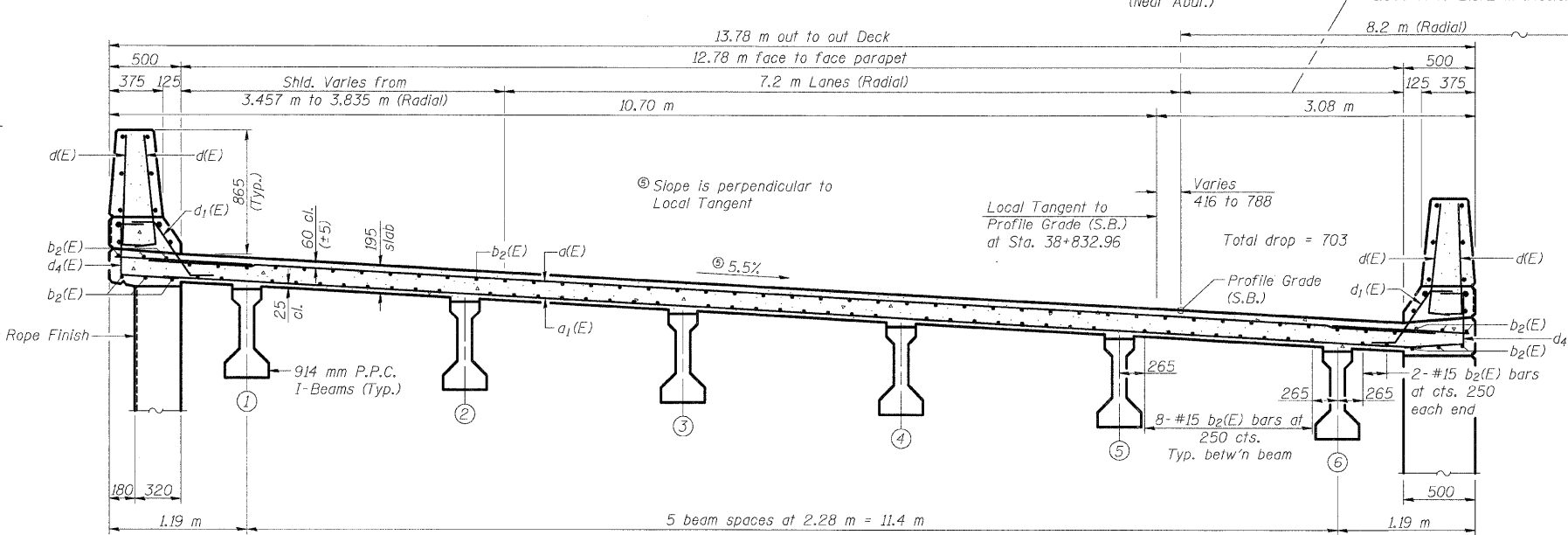
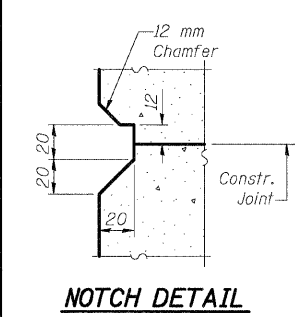
12/10/2007 12:01:35 PM
 pr:\2007\11es\0000024\chumber-t-bridge-plans\060-0308\approachslabs.dgn

ROUTE NO.	SECTION	COUNTY	STATE	SHEET	SHEET NO. 18 48 SHEETS
F.A.P. 310	*	MADISON	239	140	
FED. ROAD DIST. NO. 7 ILLINOIS FED. AID PROJECT					
* 60-15HB-1 CONTRACT NO. 76635					



Notes: See Sheets 35, 36, and 37 of 48
 For v20(E), v57(E), v58(E), v59(E) and v60(E) bars.
 Work this sheet with sheet 19 of 48.

- Ⓞ Dimensions are based on a Rolled Rail Strip Seal Joint. If the contractor elects to use the Welded Rail Strip Seal Joint, deck dimensions may require adjustments to satisfy the details on Sheet 43 of 48.
- Ⓞ M24 Anchor bolts at South Parapet only.
- Ⓞ Patterned Rope Texture Concrete. See Sheet 42 of 48 for details.
- Ⓞ 50 mm ϕ Galvanized Conduit (Sch. 40 pipe) shall conform to the requirements ANSI C 80.1 or UL 1242. Thread and cap each end. Cost included with "Concrete Superstructure". (See Details Sheet 2 of 48).



DESIGNED	ADL
CHECKED	WLW
DRAWN	ADL/DGM
CHECKED	WLW

SA-I-R (M) 4-30-97

S.B. EAST APPROACH SLAB (1 OF 2)
FAP RTE. 310 (IL RTE. 255) OVER
CH ROUTE 4 (HUMBERT ROAD)
SECTION 60-15HB-1
MADISON COUNTY
STATION 38+829.909
SN 060-0308 (NB) & 060-0309 (SB)

Klingner & Assoc., P.C.