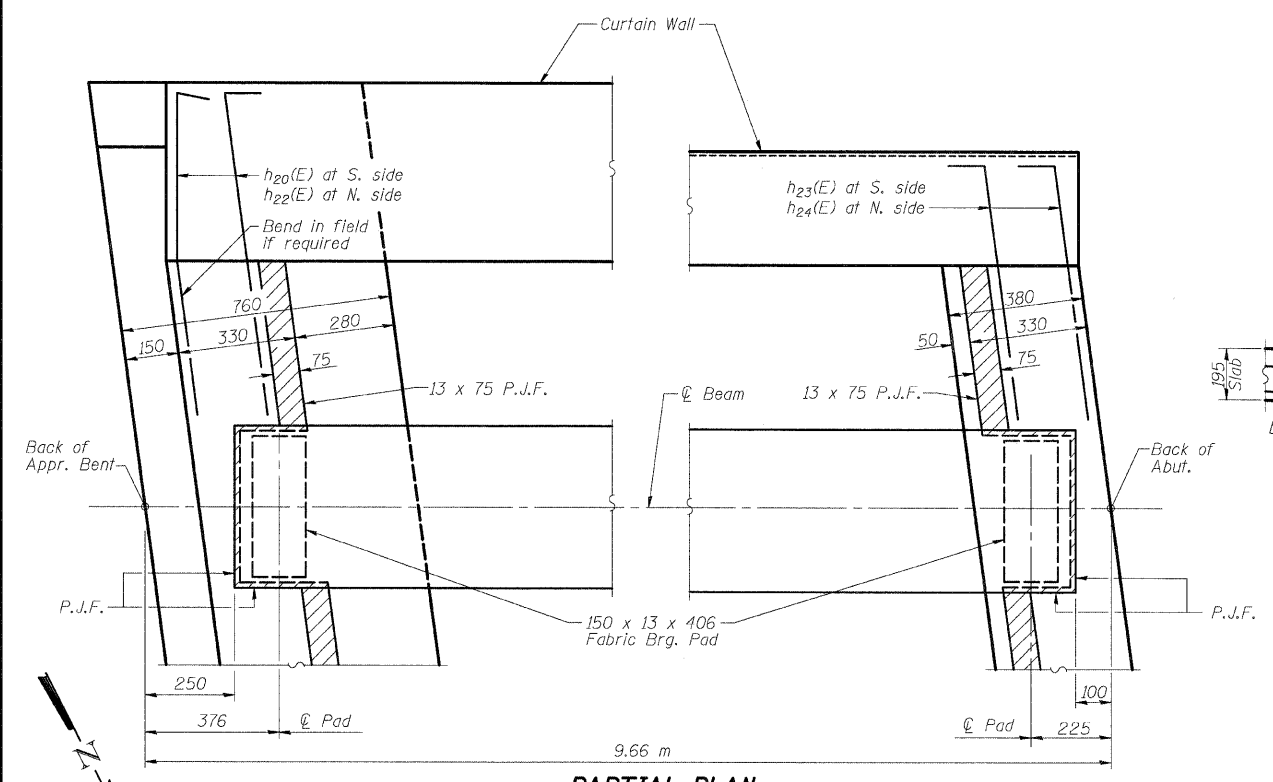


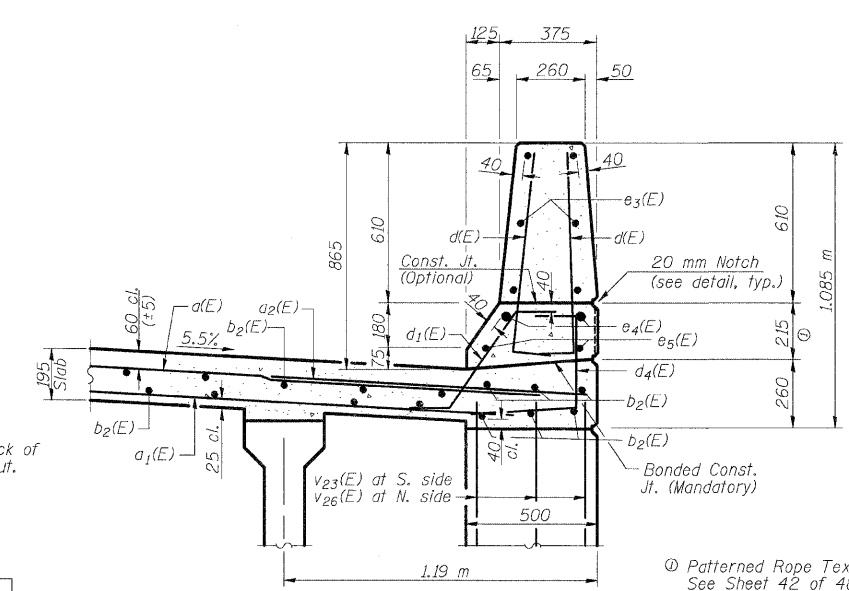
12/10/2007 12:01:35 PM

p:\207files\000024\chumber-t-bridge-plans\060-2308approachslabs.dgn

ROUTE NO.	SECTION	COUNTY	TOTAL SHEETS	SHEET NO.
310	*	MADISON	239	141
SHEET NO. 19 48 SHEETS				
* 60-15HB-1 CONTRACT NO. 76635				

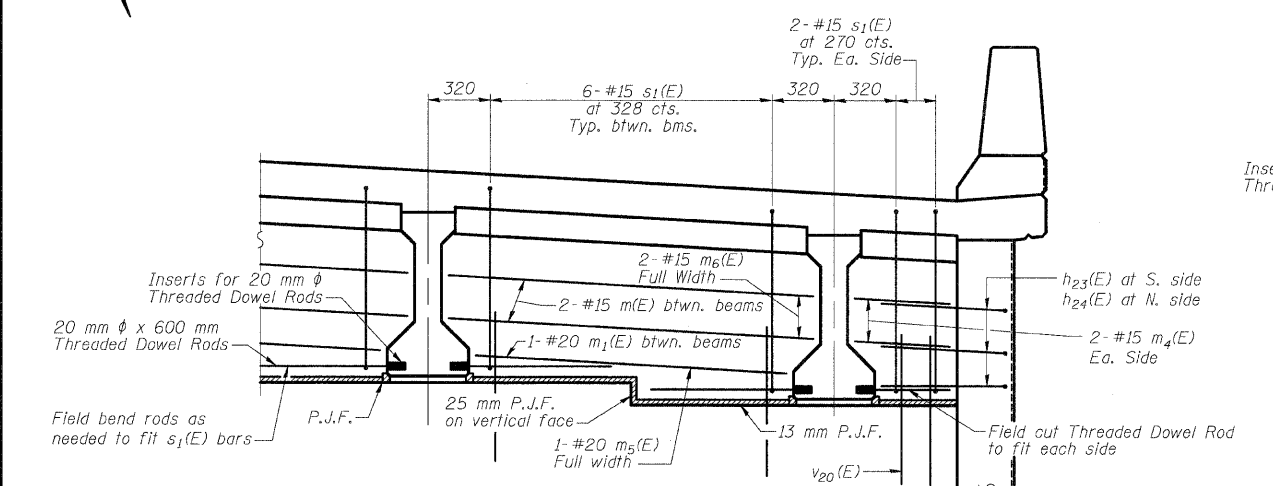


PARTIAL PLAN



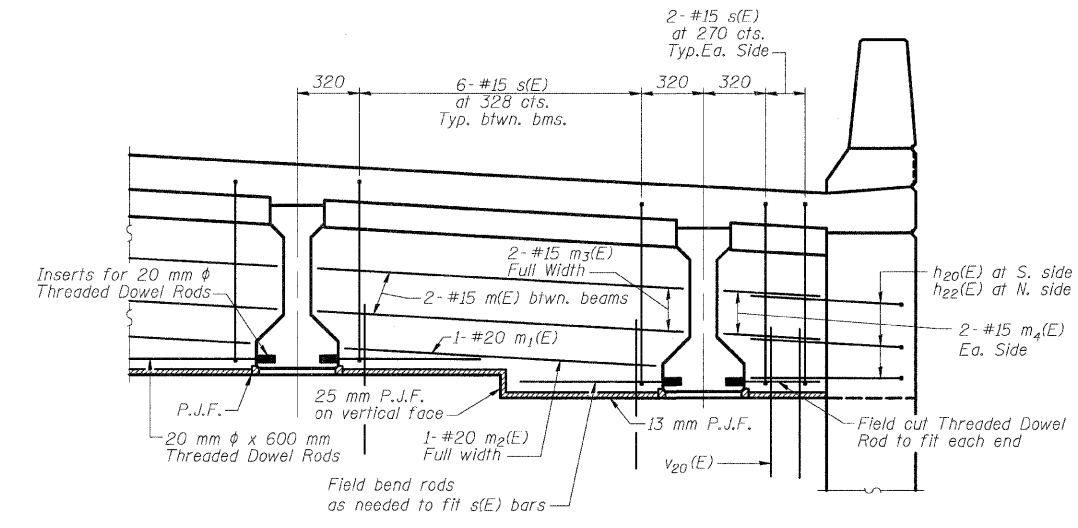
SECTION THRU PARAPET
(Near Bent)

Ⓞ Patterned Rope Texture Concrete
See Sheet 42 of 48 for details.



DIAPHRAGM AT ABUTMENT

For location of m(E), m1(E), m2(E), m3(E), and m4(E) bars see Section A-A on Sheet 18 of 48. Dimensions are perpendicular to \bar{C} Beam.



DIAPHRAGM AT APPROACH BENT

For location of m(E), m1(E), m2(E), m3(E), and m4(E) bars see Section B-B on sheet 18 of 48. Dimensions are perpendicular to \bar{C} Beam.

S.B. EAST APPROACH SLAB
BILL OF MATERIAL

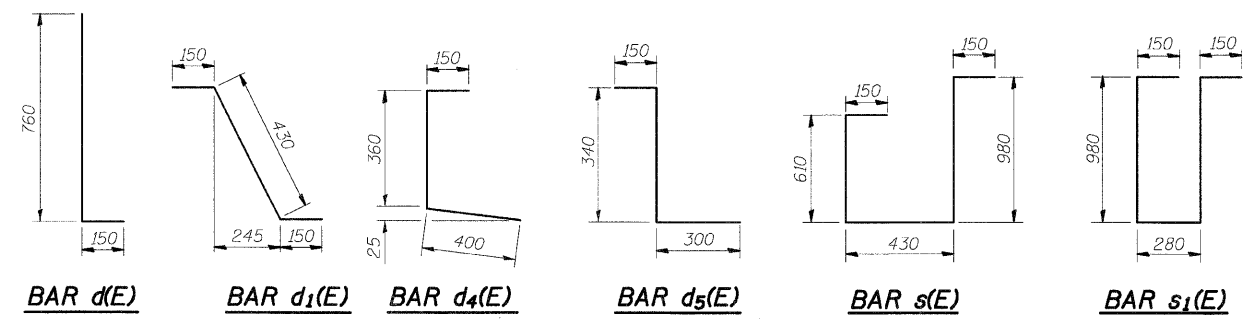
Bar	No.	Size (*)	Length (m)	Shape
d(E)	59	#15	13.34	—
a1(E)	43	#15	13.14	—
a2(E)	58	#20	1.20	—
a3(E)	4	#15	13.40	—
b2(E)	99	#15	9.42	—
d1(E)	140	#15	0.91	L
d2(E)	64	#15	0.73	L
d3(E)	70	#15	0.91	L
d4(E)	6	#15	0.79	L
e3(E)	24	#15	4.67	—
e4(E)	4	#25	9.42	—
e5(E)	4	#15	9.42	—
m(E)	20	#15	2.05	—
m1(E)	10	#20	1.75	—
m2(E)	1	#20	13.42	—
m3(E)	2	#15	13.42	—
m4(E)	8	#15	0.53	—
m5(E)	1	#20	12.81	—
m6(E)	2	#15	12.81	—
s(E)	34	#15	2.32	⌋
s1(E)	34	#15	2.54	⌋
v20(E)	45	#15	0.75	—

Reinforcement Bars, Epoxy Coated	kg	5170
Concrete Superstructure	m ³	41.3
Bridge Deck Grooving	m ²	122
Protective Coat	m ²	144
Form Liner Textured Surface	m ²	5

S.B. EAST APPROACH SLAB (2 OF 2)
FAP RTE. 310 (IL RTE. 255) OVER
CH ROUTE 4 (HUMBERT ROAD)
SECTION 60-15HB-1
MADISON COUNTY
STATION 38+829.909
SN 060-0308 (NB) & 060-0309 (SB)

DESIGNED	ADL
CHECKED	WLW
DRAWN	ADL/DGM
CHECKED	WLW

Notes:
See sheets 35, 36, and 37 of 48 for h20(E), h22(E), h23(E), h24(E), v20(E), v23(E) and v26(E) bars.
Work this sheet with sheet 18 of 48.



SA-1D-R (M) 4-30-97