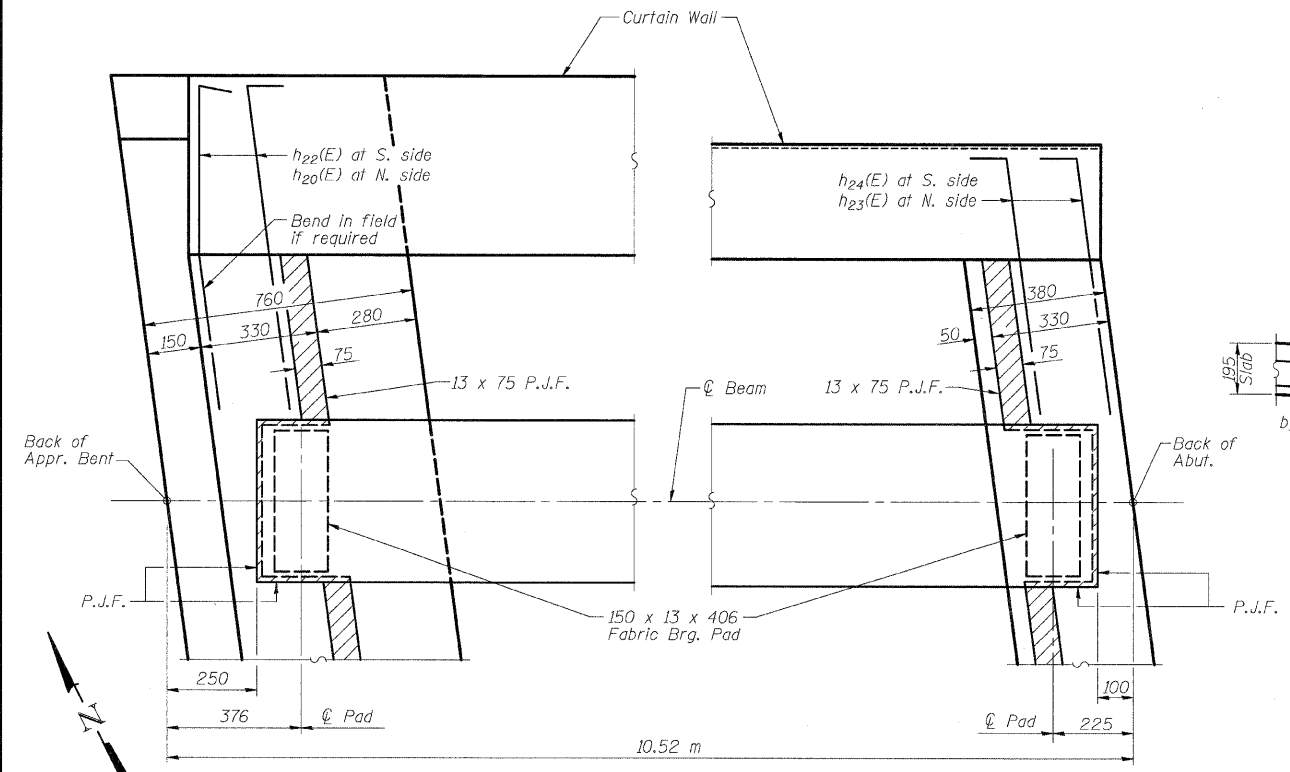
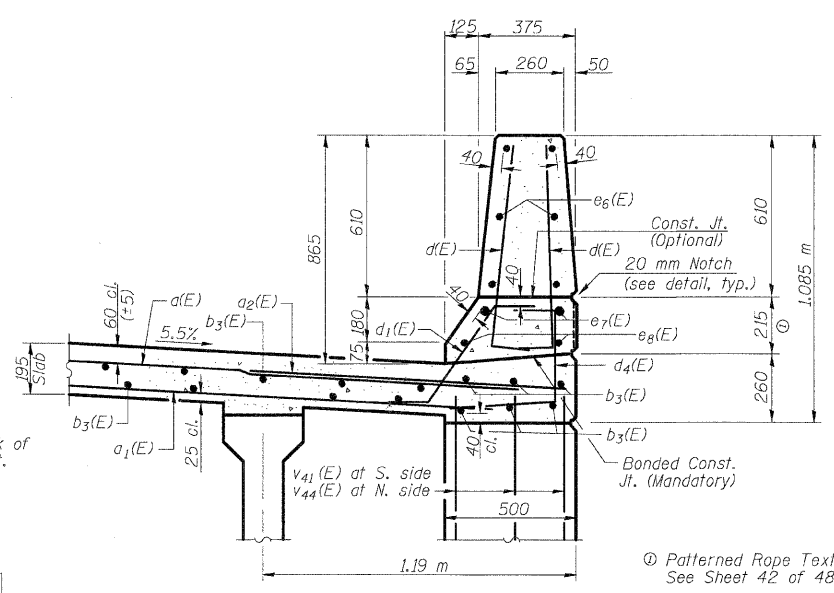


12/10/2007 12:01:35 PM  
 pt:\01\les\020224\chamber-t-bridge-plans\060-0308\approachslabs.dgn

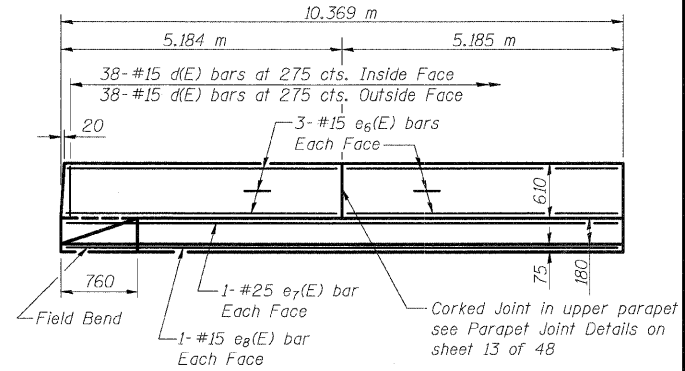
ROUTE NO.	SECTION	COUNTY	TOTAL SHEETS	SHEET NO.	SHEET NO.
F.A.P. 310	*	MADISON	239	143	48 SHEETS
* 60-15HB-1 CONTRACT NO. 76635					



**PARTIAL PLAN**



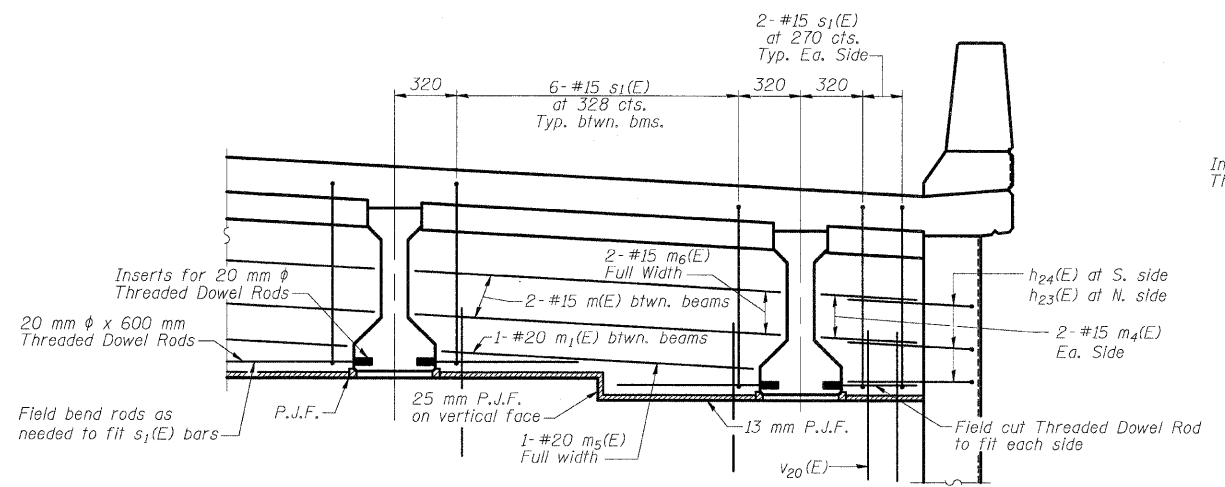
**SECTION THRU PARAPET (Near Bent)**



**INSIDE ELEVATION OF PARAPET**

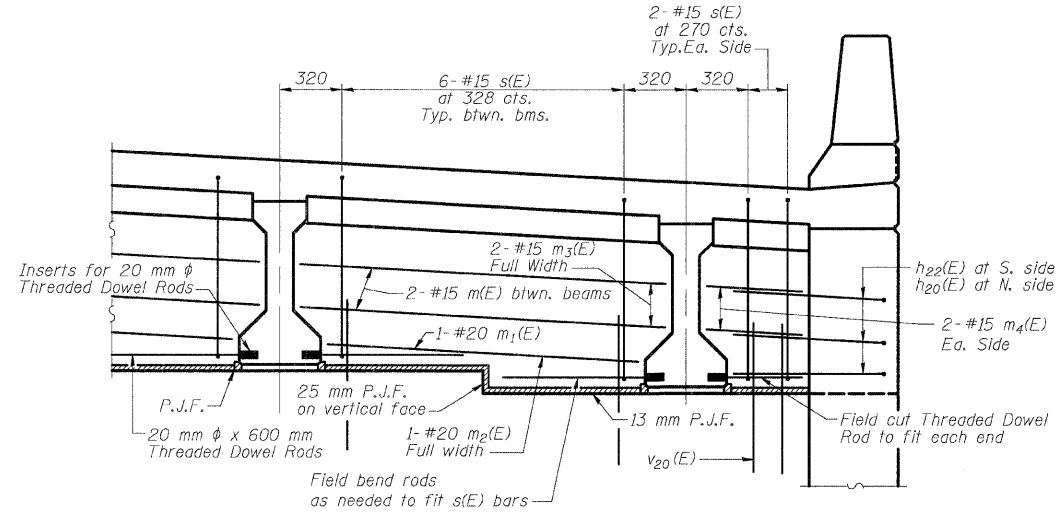
**S.B. WEST APPROACH SLAB BILL OF MATERIAL**

Bar	No.	Size (*)	Length (m)	Shape
a(E)	65	#15	13.34	—
a1(E)	47	#15	13.14	—
a2(E)	64	#20	1.20	—
a3(E)	4	#15	13.40	—
b3(E)	99	#15	10.27	—
d(E)	152	#15	0.91	L
d1(E)	70	#15	0.73	L
d4(E)	76	#15	0.91	L
d5(E)	6	#15	0.79	L
e6(E)	24	#15	5.10	—
e7(E)	4	#25	10.27	—
e8(E)	4	#15	10.27	—
m(E)	20	#15	2.05	—
m1(E)	10	#20	1.75	—
m2(E)	1	#20	13.42	—
m3(E)	2	#15	13.42	—
m4(E)	8	#15	0.53	—
m5(E)	1	#20	12.81	—
m6(E)	2	#15	12.81	—
s(E)	34	#15	2.32	□
s1(E)	34	#15	2.54	□
v77(E)	45	#15	0.75	—
Reinforcement Bars, Epoxy Coated	kg		5590	
Concrete Superstructure	m <sup>3</sup>		44.3	
Bridge Deck Grooving	m <sup>2</sup>		133	
Protective Coat	m <sup>2</sup>		157	
Form Liner Textured Surface	m <sup>2</sup>		5	



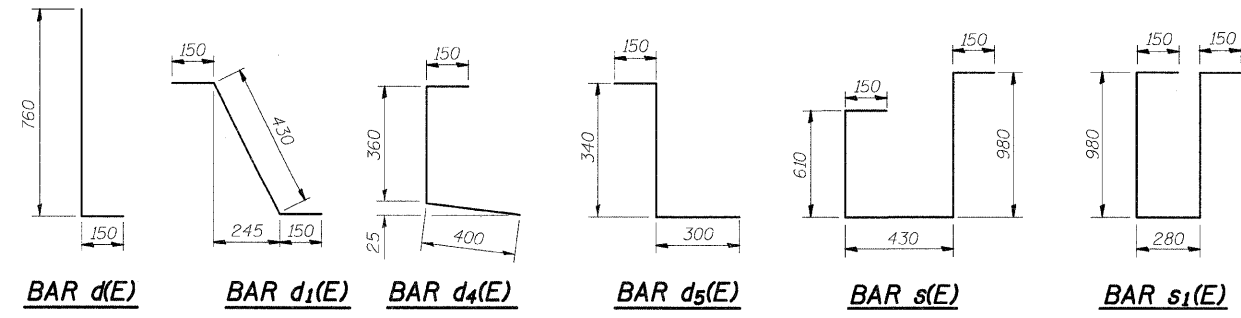
**DIAPHRAGM AT ABUTMENT**

For location of m(E), m1(E), m4(E), m5(E), and m6(E) bars see Section A-A on Sheet 20 of 48. Dimensions are perpendicular to  $\phi$  Beam.



**DIAPHRAGM AT APPROACH BENT**

For location of m(E), m1(E), m2(E), m3(E), and m4(E) bars see Section B-B on sheet 20 of 48. Dimensions are perpendicular to  $\phi$  Beam.



DESIGNED	ADL
CHECKED	WLW
DRAWN	ADL/DGM
CHECKED	WLW

SA-1D-R (M) 4-30-97

Notes: See sheets 38, 39, and 40 of 48 for h20(E), h22(E), h23(E), h24(E), v20(E), v41(E) and v44(E) bars. Work this sheet with sheet 20 of 48.

**S.B. WEST APPROACH SLAB (2 OF 2)**  
 FAP RTE. 310 (IL RTE. 255) OVER  
 CH ROUTE 4 (HUMBERT ROAD)  
 SECTION 60-15HB-1  
 MADISON COUNTY  
 STATION 38+829.909  
 SN 060-0308 (NB) & 060-0309 (SB)

Klingner & Assoc., P.C.