

12/10/2007 12:07:59 PM

ps:\06\105\020024\dhumbert-br-edge\br-edge.plans\060-0308\abutment.sbgn

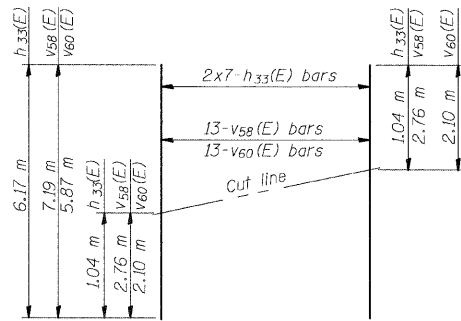
Notes:
Space reinforcement in cap to miss anchor bolts.
Work this sheet with sheets 36 & 37 of 48.
Pour steps monolithically with cap.

APPR. BENT-PILE DATA

Type & Size: Metal Shell - 356 mm dia. x 6.35 mm walls
Nominal Required Bearing: 900 KN
Allowable Resistance Available: 300 KN
Est. Length: 16.5 m
No. Req'd.: 12

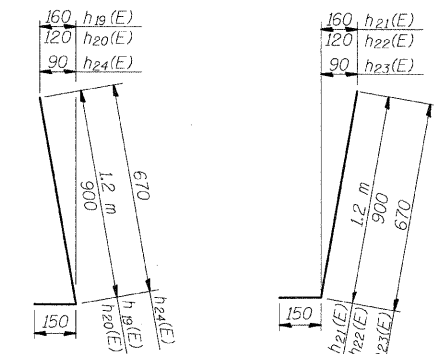
ABUT.-PILE DATA

Type & Size: Metal Shell - 356 mm dia. x 6.35 mm walls
Nominal Required Bearing: 1500 KN
Allowable Resistance Available: 500 KN
Est. Length: 16.5 m
No. Req'd.: 19+1 Test Pile



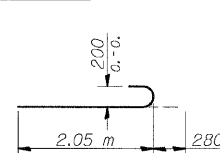
FIELD CUTTING DIAGRAM

Order h33(E), v58(E) and v60(E) bars full length. Cut to fit and use remainder of bars in opposite face of curtain wall.

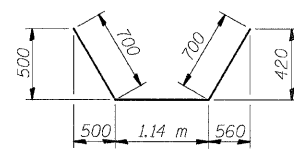


BARS h19(E), h20(E) & h24(E)
BARS h21(E), h22(E) & h23(E)

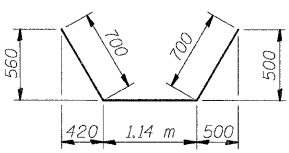
DESIGNED	ADL
CHECKED	WLW
DRAWN	ADL/DGH
CHECKED	WLW



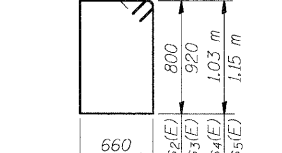
BAR n(E)



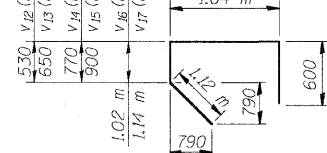
BAR h8(E)



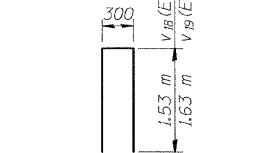
BAR h9(E)



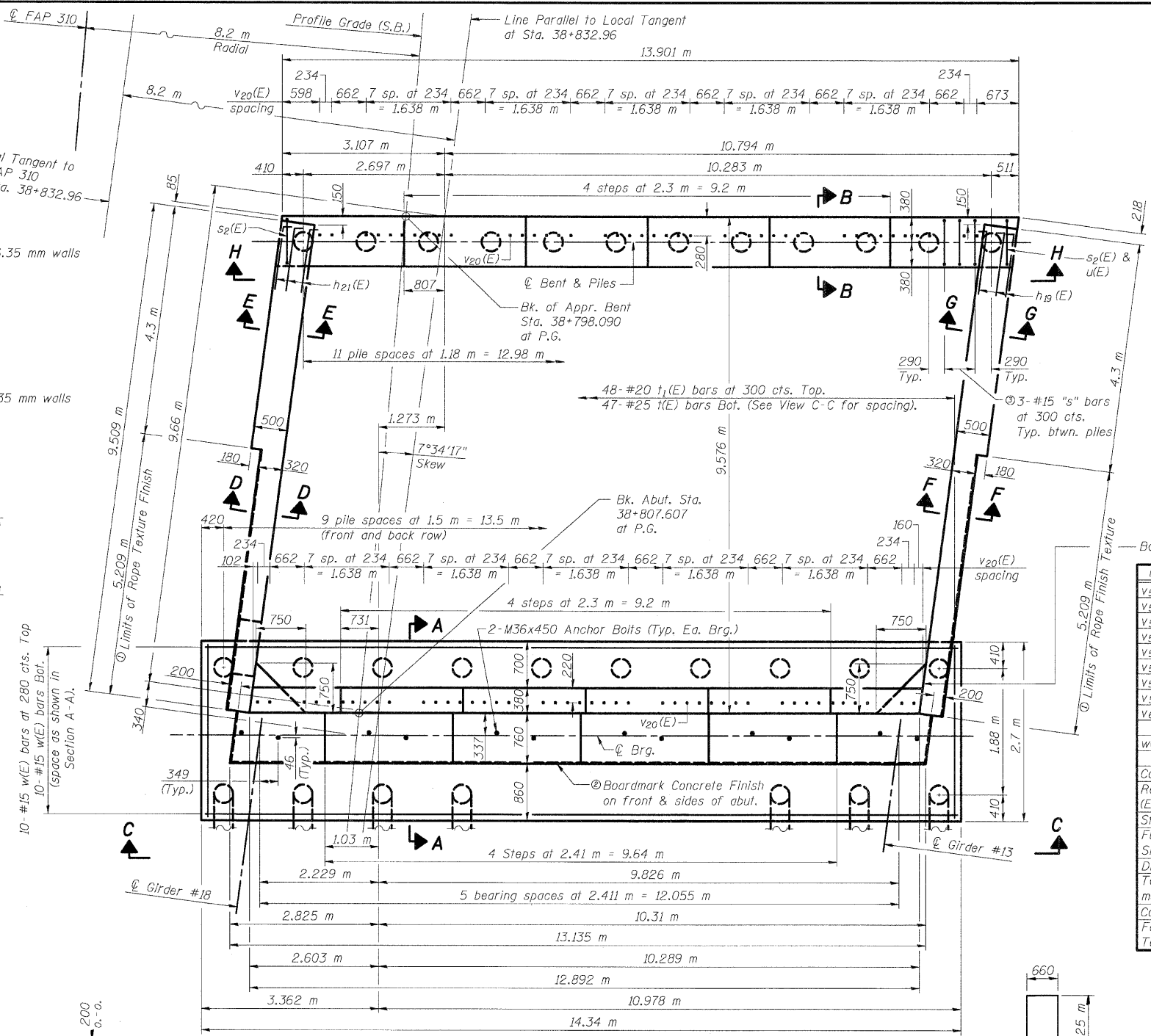
BARS s2(E) thru s5(E)



BARS v12(E) thru v17(E)



BARS v18(E) & v19(E)



PLAN

BAR u(E)

ROUTE NO.	SECTION	COUNTY	TOTAL SHEETS	SHEET NO.
S.B. 1	F.A.P. 310	MADISON	239	157
FED. ROAD DIST. NO. 7	ILLINOIS	FED. AID PROJECT		

**S.B. EAST ABUTMENT
BILL OF MATERIAL**

Bar	No.	Size	Length (m)	Shape
h(E)	22	#15	13.00	
h1(E)	12	#15	3.10	
h2(E)	2	#15	8.82	
h3(E)	4	#15	4.00	
h4(E)	4	#15	1.60	
h5(E)	6	#15	12.81	
h6(E)	10	#15	4.01	
h7(E)	2	#15	1.74	
h8(E)	18	#15	2.54	
h9(E)	18	#15	2.54	
h10(E)	16	#15	1.01	
h12(E)	12	#15	8.78	
h13(E)	16	#15	9.41	
h14(E)	4	#15	3.65	
h15(E)	2	#15	3.54	
h16(E)	8	#15	4.21	
h17(E)	6	#25	4.87	
h18(E)	4	#25	7.25	
h19(E)	25	#15	1.35	
h20(E)	6	#15	1.05	
h21(E)	23	#15	1.35	
h22(E)	6	#15	1.05	
h23(E)	6	#15	0.78	
h24(E)	6	#15	0.78	
h33(E)	14	#15	6.17	
n(E)	104	#25	2.33	
p(E)	6	#20	13.80	
p1(E)	11	#20	3.20	
p2(E)	2	#20	9.11	
p3(E)	3	#20	2.21	
v52(E)	8	#25	3.12	
v53(E)	8	#25	3.24	
v54(E)	8	#25	3.37	
v55(E)	8	#25	3.49	
v56(E)	6	#25	3.62	
v57(E)	8	#15	5.71	
v58(E)	13	#15	7.19	
v59(E)	8	#15	5.05	
v60(E)	13	#15	5.87	
w(E)	20	#15	14.24	
t(E)	47	#25	3.16	
t1(E)	48	#20	2.60	
u(E)	12	#15	3.16	
v12(E)	6	#15	3.29	
v13(E)	8	#15	3.41	
v14(E)	8	#15	3.53	
v15(E)	8	#15	3.66	
v16(E)	8	#15	3.78	
v17(E)	6	#15	3.90	
v18(E)	6	#15	3.36	
v19(E)	37	#15	3.56	
v20(E)	96	#15	0.90	
v23(E)	45	#15	2.62	
v26(E)	45	#15	1.96	
v45(E)	6	#20	3.00	
v46(E)	8	#20	3.12	
v47(E)	8	#20	3.24	
v48(E)	8	#20	3.37	
v49(E)	8	#20	3.49	
v50(E)	6	#20	3.62	
v51(E)	6	#25	3.00	
Concrete Structures	m ³		107.8	
Reinforcement Bars (Epoxy Coated)	kg		7040	
Structure Excavation	m ³		222	
Furnishing Metal Pile Shell 356 mm	m		511.5	
Driving Piles	m		511.5	
Test Piles metal shells	each		1	
Concrete Sealer	m ²		10	
Form Liner Textured Surface	m ²		79	

① Patterned Rope Texture Concrete (See Sheet 42 of 48 for details)
② Random Width Boardmark Concrete (See Sheet 42 of 48 for details)

**S.B. EAST ABUTMENT (1 OF 3)
FAP RTE. 310 (IL RTE. 255) OVER
CH ROUTE 4 (HUMBERT ROAD)
SECTION 60-15HB-1
MADISON COUNTY
STATION 38+829.909
SN 060-0308 (NB) & 060-0309 (SB)**