

F.A.U. RTE.	SECTION	COUNTY	TOTAL SHEETS	SHEET NO.
9105	119-I-1	MADISON	9	1
		ILLINOIS	CONTRACT NO. 76D01	

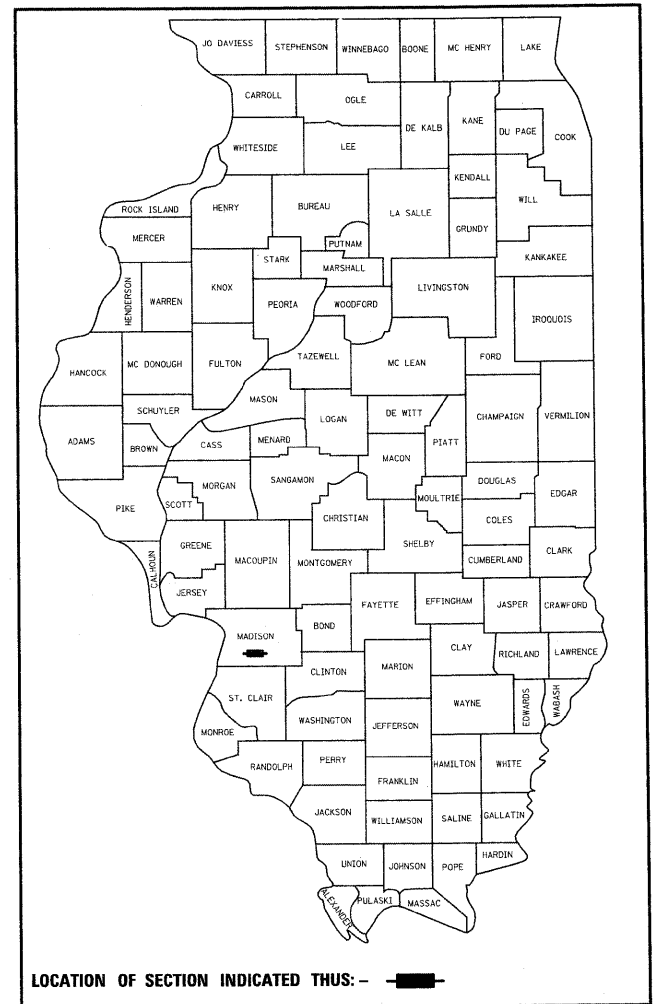
STATE OF ILLINOIS
DEPARTMENT OF TRANSPORTATION
DIVISION OF HIGHWAYS

**PROPOSED
HIGHWAY PLANS**

FAU ROUTE 9105
SECTION 119-I-1
**STRIPING, SIGNING, & MEDIAN RUMBLE STRIP
ON MCKINLEY BRIDGE
MADISON COUNTY**

PROJECT:
HSIP-9105(002)

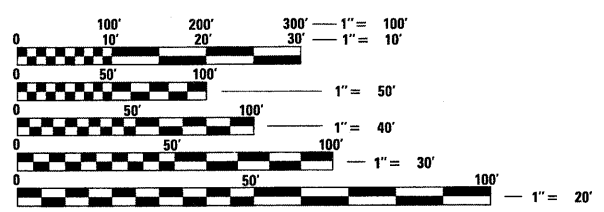
D-98-046-09



LOCATION OF SECTION INDICATED THUS: - [black rectangle] -

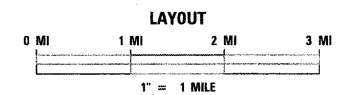
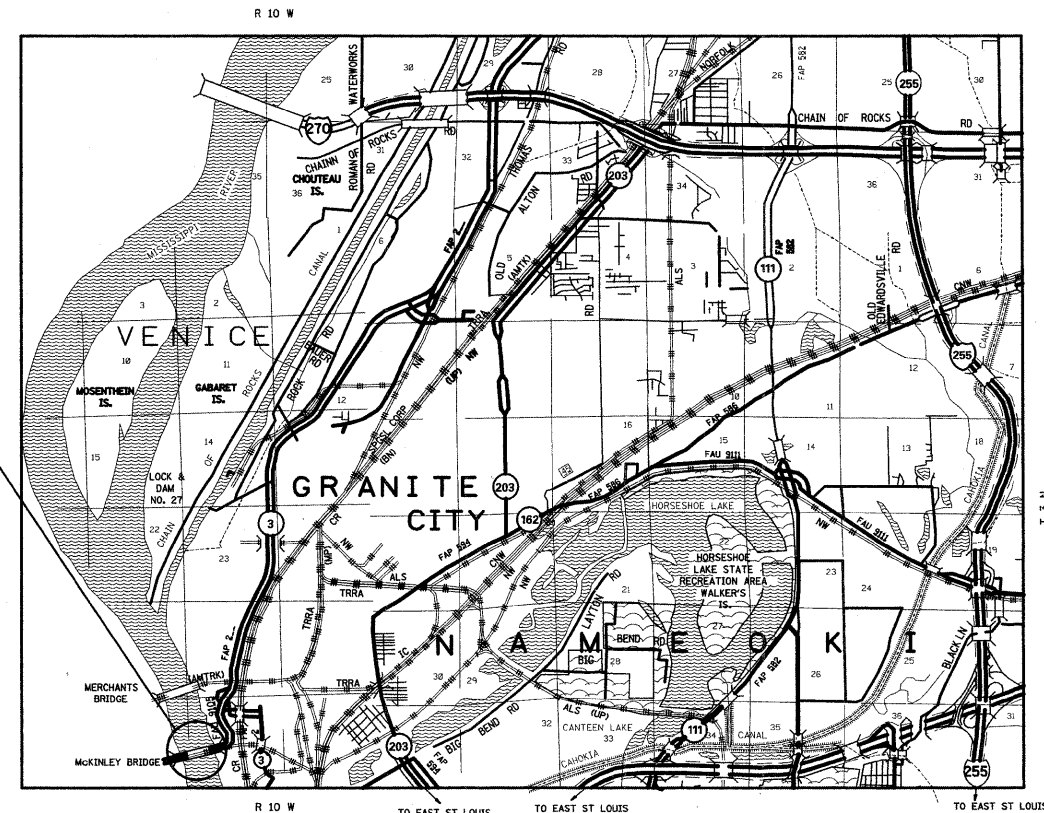
FOR INDEX OF SHEETS, SEE SHEET NO. 2

C-98-042-09



FULL SIZE PLANS HAVE BEEN PREPARED USING STANDARD ENGINEERING SCALES. REDUCED SIZED PLANS WILL NOT CONFORM TO STANDARD SCALES. IN MAKING MEASUREMENTS ON REDUCED PLANS, THE ABOVE SCALES MAY BE USED.

J.U.L.I.E.
JOINT UTILITY LOCATION INFORMATION FOR EXCAVATION
1-800-892-0123
OR 811



LATITUDE: 38.66502 LONGITUDE: 90.18255

TRAFFIC DATA
ADT: 10200 (2009)
12400 (2029)
SU: 3.3%
MU: 7.0%

PROJECT ENGINEER: PATTI LEBEAU (618) 346-3179
PROJECT MANAGER: ART MUEHLFELD (618) 346-3209

CONTRACT NO. 76D01

STATE OF ILLINOIS
DEPARTMENT OF TRANSPORTATION
DIVISION OF HIGHWAYS

SUBMITTED February 4 20 09

Mary E. Yonnie
DEPUTY DIRECTOR OF HIGHWAYS, REGION ENGINEER

March 27, 20 09
Charles J. Innes
ENGINEER OF DESIGN AND ENVIRONMENT

March 27, 20 09
Christine M. Reed
DIRECTOR OF HIGHWAYS, CHIEF ENGINEER

**PRINTED BY THE AUTHORITY
OF THE STATE OF ILLINOIS**

GROSS LENGTH = 6025 FT. = 1.14 MILES
NET LENGTH = 6025 FT = 1.14 MILES