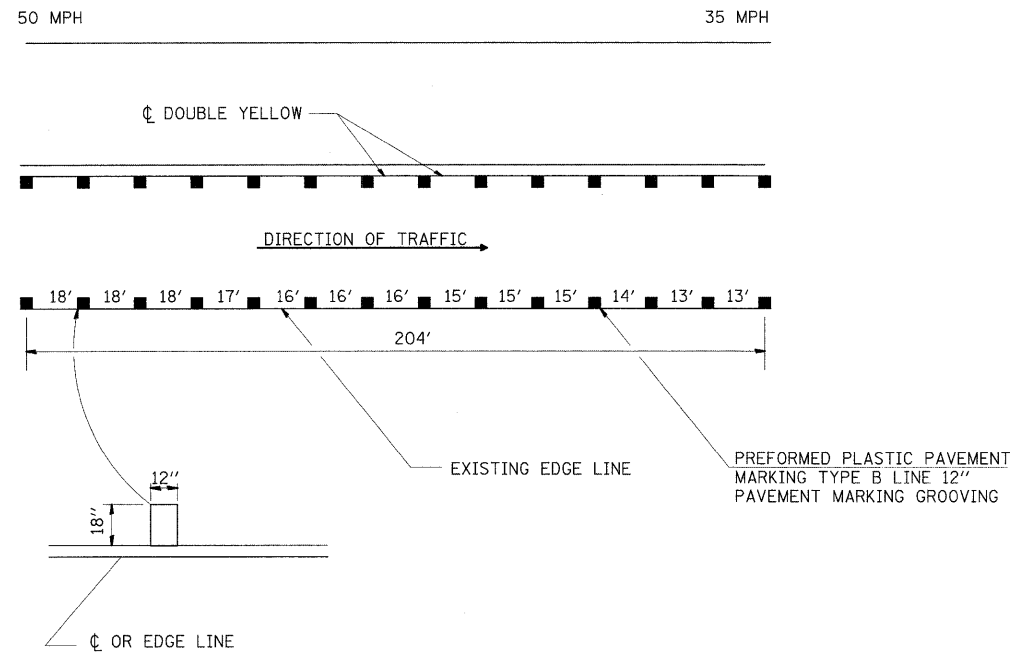
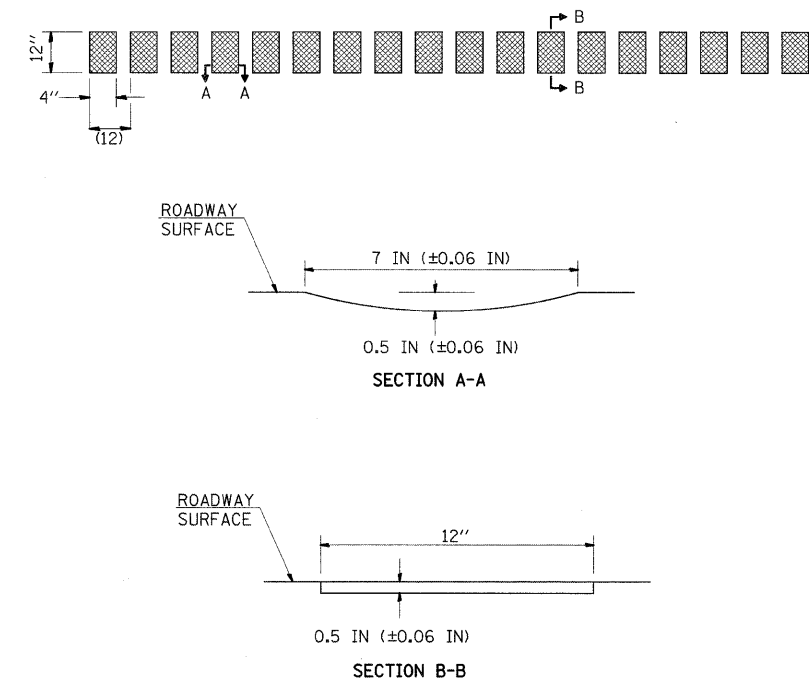


SPEED REDUCTION PAVEMENT MARKING DETAIL
(SEE PLAN SHEETS FOR LOCATIONS)



CENTERLINE RUMBLE STRIP DETAIL



NOTE: THE PROPOSED CENTERLINE PAVEMENT MARKINGS SHALL BE PLACED AFTER THE CONSTRUCTION OF THE RUMBLE STRIP.

DRAWINGS ARE NOT TO SCALE

FILE NAME =	USER NAME = gelinh	DESIGNED -	REVISED -	STATE OF ILLINOIS DEPARTMENT OF TRANSPORTATION	SCALE: _____ SHEET NO. ____ OF ____ SHEETS STA. _____ TO STA. _____	F.A.U. RTE. 9105	SECTION 119-1-1	COUNTY MADISON	TOTAL SHEETS 9	SHEET NO. 5
ct:\pw_work\pwidot\gelinh\d0123580\087601-plan.dgn	PLOT SCALE = 50.0000' / IN.	DRAWN -	REVISED -			CONTRACT NO. 76D01				
	PLOT DATE = 1/30/2009	CHECKED -	REVISED -			ILLINOIS FED. AID PROJECT				
		DATE -	REVISED -							