

F.A.U. RTE.	SECTION	COUNTY	TOTAL SHEETS	SHEET NO.
9105	119-I-1	MADISON	9	1
		ILLINOIS	CONTRACT NO. 76D01	

STATE OF ILLINOIS  
DEPARTMENT OF TRANSPORTATION  
DIVISION OF HIGHWAYS

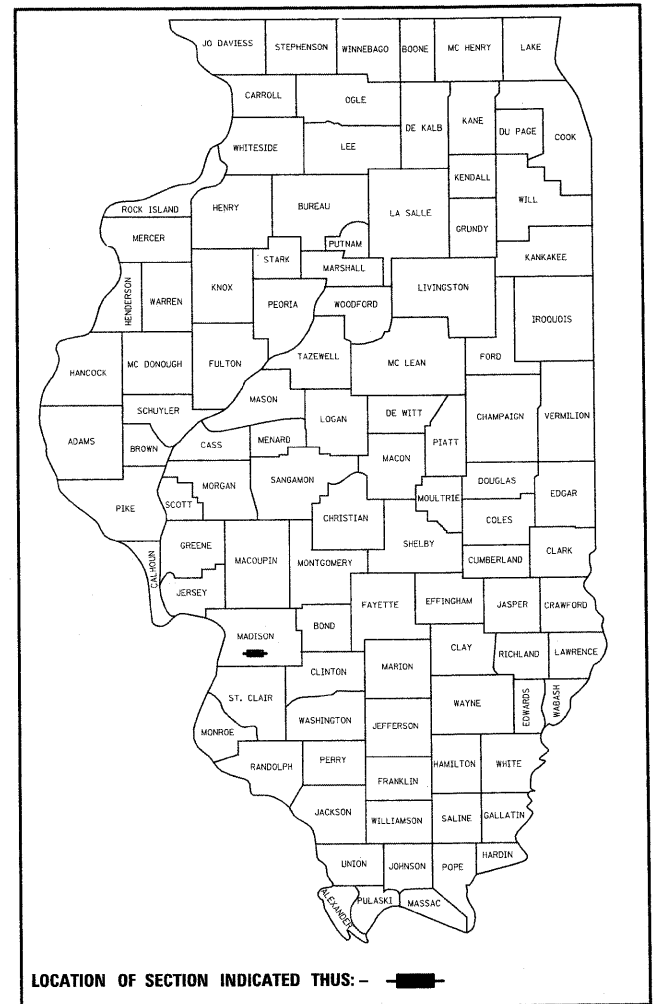
**PROPOSED  
HIGHWAY PLANS**

FAU ROUTE 9105  
SECTION 119-I-1  
**STRIPING, SIGNING, & MEDIAN RUMBLE STRIP  
ON MCKINLEY BRIDGE  
MADISON COUNTY**

PROJECT:  
HSIP-9105(002)

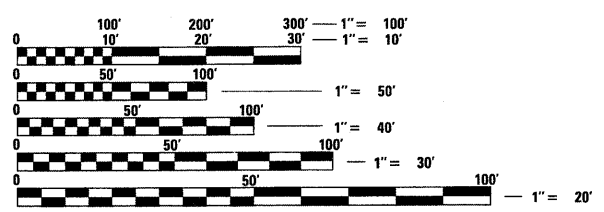
C-98-042-09

D-98-046-09



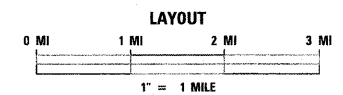
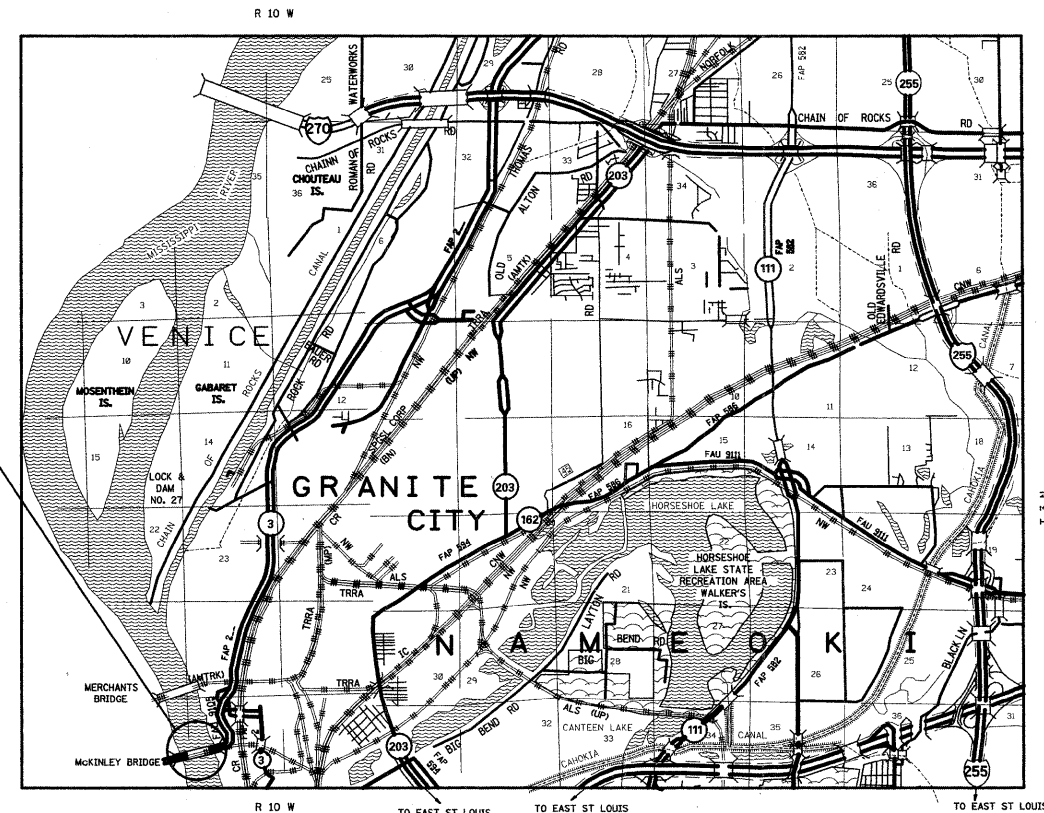
LOCATION OF SECTION INDICATED THUS: - [shaded rectangle] -

FOR INDEX OF SHEETS, SEE SHEET NO. 2



FULL SIZE PLANS HAVE BEEN PREPARED USING STANDARD ENGINEERING SCALES. REDUCED SIZED PLANS WILL NOT CONFORM TO STANDARD SCALES. IN MAKING MEASUREMENTS ON REDUCED PLANS, THE ABOVE SCALES MAY BE USED.

J.U.L.I.E.  
JOINT UTILITY LOCATION INFORMATION FOR EXCAVATION  
1-800-892-0123  
OR 811



LATITUDE: 38.66502      LONGITUDE: 90.18255

TRAFFIC DATA  
ADT: 10200 (2009)  
12400 (2029)  
SU: 3.3%  
MU: 7.0%

PROJECT ENGINEER: PATTI LEBEAU (618) 346-3179  
PROJECT MANAGER: ART MUEHLFELD (618) 346-3209

CONTRACT NO. 76D01

STATE OF ILLINOIS  
DEPARTMENT OF TRANSPORTATION  
DIVISION OF HIGHWAYS

SUBMITTED February 4 20 09

*Mary E. Yonnie*  
DEPUTY DIRECTOR OF HIGHWAYS, REGION ENGINEER

March 27, 20 09  
*Charles J. Innes*  
ENGINEER OF DESIGN AND ENVIRONMENT

March 27, 20 09  
*Christine M. Reed*  
DIRECTOR OF HIGHWAYS, CHIEF ENGINEER

**PRINTED BY THE AUTHORITY  
OF THE STATE OF ILLINOIS**

GROSS LENGTH = 6025 FT. = 1.14 MILES  
NET LENGTH = 6025 FT = 1.14 MILES

## INDEX OF SHEETS

1. COVER PAGE
2. INDEX OF SHEETS/HIGHWAY STANDARDS/GENERAL NOTES & COMMITMENTS
3. SUMMARY OF QUANTITIES
4. SCHEDULES OF QUANTITIES
5. DETAILS
6. - 9. PAVEMENT MARKING SHEETS

## HIGHWAY STANDARDS

- |                      |   |
|----------------------|---|
| 000001-05            | STANDARD SYMBOLS, ABBREVIATIONS AND PATTERNS  |
| 001006               | DECIMAL OF AN INCH OF A FOOT  |
| 701001-02            | OFF-ROAD OPERATIONS, 2L, 2W, MORE THAN 15' (4.5 m) AWAY                                 |
| <del>701306-02</del> | <del>LANE CLOSURE 2L, 2W, SLOW MOVING OPERATIONS DAY ONLY, FOR SPEEDS &gt; 45 MPH</del> |
| <del>701311-03</del> | <del>LANE CLOSURE 2L, 2W MOVING OPERATIONS - DAY ONLY</del>                             |
| 701901-01            | TRAFFIC CONTROL DEVICES   |
| 780001-02            | TYPICAL PAVEMENT MARKINGS   |
| <i>BLR22-5</i>       |   |

## COMMITMENTS

IF AT ANY POINT IN PROJECT IMPLEMENTATION OR OPERATION A COMMITMENT WILL BE AFFECTED BY SUBSEQUENT PROJECT DECISIONS OR COMMITMENTS, THE AFFECTED PARTIES, WHICH INCLUDES ALL DEPARTMENT PERSONNEL, WILL BE NOTIFIED AND THEIR COMMENTS WILL BE CONSIDERED PRIOR TO MAKING A FINAL DECISION ON THE ACTION AFFECTING THE EARLIER COMMITMENT. THE PROCEDURES AND THE RESULTS OF THE COORDINATION WITH AFFECTED PARTIES AND THE ULTIMATE DECISION ON THE PROPOSED CHANGE(S) TO THE COMMITMENT SHALL BE DOCUMENTED IN THE COMMITMENT FILE.

COMMITMENTS FOR THIS PROJECT ARE AS FOLLOWS: NONE

## GENERAL NOTES

1. THE STANDARDS AND REVISION NUMBERS SHALL APPLY TO THIS PROJECT.
2. THE CONTRACTOR SHALL VERIFY ALL DIMENSIONS AND CONDITIONS IN THE FIELD PRIOR TO CONSTRUCTION AND ORDERING MATERIALS.
3. THE CONTRACTOR SHALL REMOVE THE EXISTING CENTER LINE PRIOR TO CONSTRUCTING THE CENTER LINE RUMBLE STRIP.
4. ILLINOIS STATE LAW REQUIRES A 48-HOUR NOTICE BE GIVEN TO ALL UTILITIES BEFORE DIGGING. FIELD MARKING OF FACILITIES MAY BE OBTAINED BY CONTACTING J.U.L.I.E. OR FOR NON-MEMBERS, THE UTILITY COMPANY DIRECTLY. AGENCIES KNOWN TO HAVE FACILITIES WITHIN THE PROJECT AREA ARE AS FOLLOWS:
  - AMEREN IP (GAS & ELECTRIC)
  - ATT&T
  - ATT&T CORPORATION
  - BUCKEYE PARTNERS, L.P. (PIPELINE)
  - CENTERPOINT ENERGY (PIPELINE)
  - CHARTER COMMUNICATIONS
  - CONSOLIDATED COMMUNICATIONS
  - EXPLORER PIPELINE COMPANY (PIPELINE)
  - ILLINOIS AMERICAN WATER COMPANY
  - LACLEDE PIPELINE COMPANY (PIPELINE)
  - LEVEL 3 COMMUNICATIONS, LLC
  - VERISON BUSINESS
  - 360NETWORKS (USA) INC.
  - QWEST SOLUTIONS CENTER
  - SPRINT/NEXTEL

MEMBERS OF J.U.L.I.E. (800)-892-0123 ARE INDICATED BY •. NON J.U.L.I.E. MEMBERS MUST BE NOTIFIED INDIVIDUALLY.

5. ALL TEMPORARY PAVEMENT MARKINGS WILL BE PLACED IN SUCH A MANNER SO AS NOT TO INTERFERE WITH THE PLACEMENT OF PERMANENT PAVEMENT MARKINGS

## TRAFFIC CONTROL

1. NO OVERNIGHT LANE CLOSURES WILL BE ALLOWED.
2. PEAK HOURS RESTRICTIONS AND PENALTIES ARE INCLUDED IN THIS PROJECT. SEE SPECIAL PROVISIONS.
3. ALL TRAFFIC CONTROL DEVICES SHALL BE SKID MOUNTED.
4. "ROAD CONSTRUCTION AHEAD" SIGNS SHALL BE PLACED AT THE BEGINNING AND END OF THE PROJECT PLUS THE INTERSECTING SIDE ROADS, AND WILL BE INCLUDED IN THE TRAFFIC CONTROL PAY ITEMS. ALL CONSTRUCTION SIGNS SHALL BE FLUORESCENT ORANGE.
5. FLAGMEN SHALL BE PRESENT DURING ALL LANE CLOSURE HOURS, INCLUDING LUNCH HOUR, AND NO ADDITIONAL COMPENSATION WILL BE ALLOWED.
6. *MESSAGE BOARDS SHALL BE PLACED TWO WEEKS PRIOR AND DURING THE FULL BRIDGE CLOSURE NOTIFYING TRAVELERS OF THE CLOSURE.*

FILE NAME =	USER NAME = gelinh	DESIGNED -	REVISED -	<b>STATE OF ILLINOIS DEPARTMENT OF TRANSPORTATION</b>	<i>Rev</i> <b>INDEX OF SHEET/HIGHWAY STANDARDS/GENERAL NOTES &amp; COMMITMENTS</b>	F.A.U. RTE. 9105	SECTION 119-I-1	COUNTY MADISON	TOTAL SHEETS 9	SHEET NO. 2
cd:\pw_work\FW100T\GELINH\d0123580\08760	01-plan.dgn	DRAWN -	REVISED -		SCALE: _____ SHEET NO. ____ OF ____ SHEETS STA. _____ TO STA. _____					<b>CONTRACT NO. 76D01</b>
	PLOT SCALE = 50.0000' / IN.	CHECKED -	REVISED -							ILLINOIS FED. AID PROJECT
	PLOT DATE = 2/2/2009	DATE -	REVISED -							

SUMMARY OF QUANTITIES			URBAN 90% FED. / 10% STATE		CONSTRUCTION TYPE CODE	
CODE NO	ITEM	UNIT	TOTAL QUANTITIES	ROADWAY		
				SFTY-10		
67100100	MOBILIZATION	L SUM	1	1		
7010 1235	TRAFFIC CONTROL AND PROTECTION, STANDARD BLR 22	L SUM	1	1		
70106800	CHANGEABLE MESSAGE SIGN	CAL MO	4	4		
70300100	SHORT-TERM PAVEMENT MARKING	FOOT	1064	1064		
70300220	TEMPORARY PAVEMENT MARKING -LINE 4"	FOOT	11656	11656		
70301000	WORK ZONE PAVEMENT MARKING REMOVAL	SQ FT	4240	4240		
78003150	PREFORMED PLASTIC PAVEMENT MARKING, TYPE B - LINE 12"	FOOT	168	168		
78008310	POLYUREA PAVEMENT MARKING TYPE II - LINE 4"	FOOT	11655	11655		
78300100	PAVEMENT MARKING REMOVAL	SQ FT	3885	3885		
X0323644	PAVEMENT MARKING GROOVING	FOOT	168	168		
X0325866	CENTER LINE - RUMBLE STRIP	FOOT	5828	5828		

PAVEMENT MARKING SCHEDULE

STA	TO	STA	PAVEMENT MARKING REMOVAL	POLYUREA PVMT MRKG TYPE II DOUBLE YELLOW CENTER LINE - LINE 4 INCH
			(SQ FT)	(FOOT)
61+00	TO	119+27.13	3885	11655
TOTAL:			3885	11655

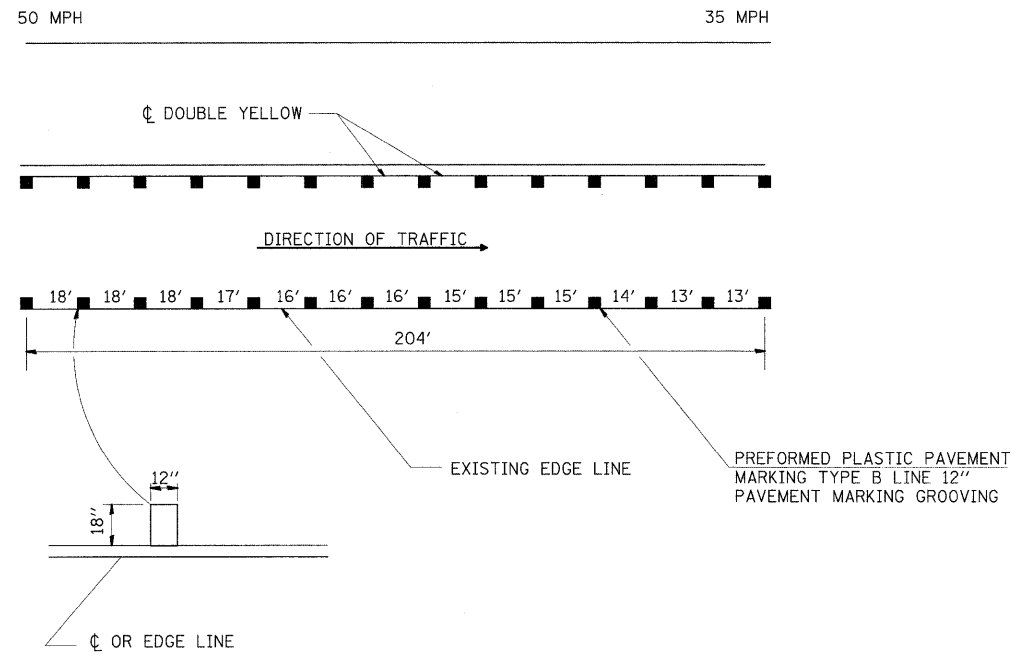
SPEED REDUCTION MARKING SCHEDULE

STA	TO	STA		PAVEMENT MARKING GROOVING	PREFORMED PLASTIC PVMT MRKG, TYPE B LINE 12 INCH
				(FOOT)	WHITE (FOOT)
62+74	TO	64+78	RT	42	42
74+78	TO	76+82	LT	42	42
110+76	TO	112+80	RT	42	42
119+21	TO	121+25	LT	42	42
TOTAL:				168	168

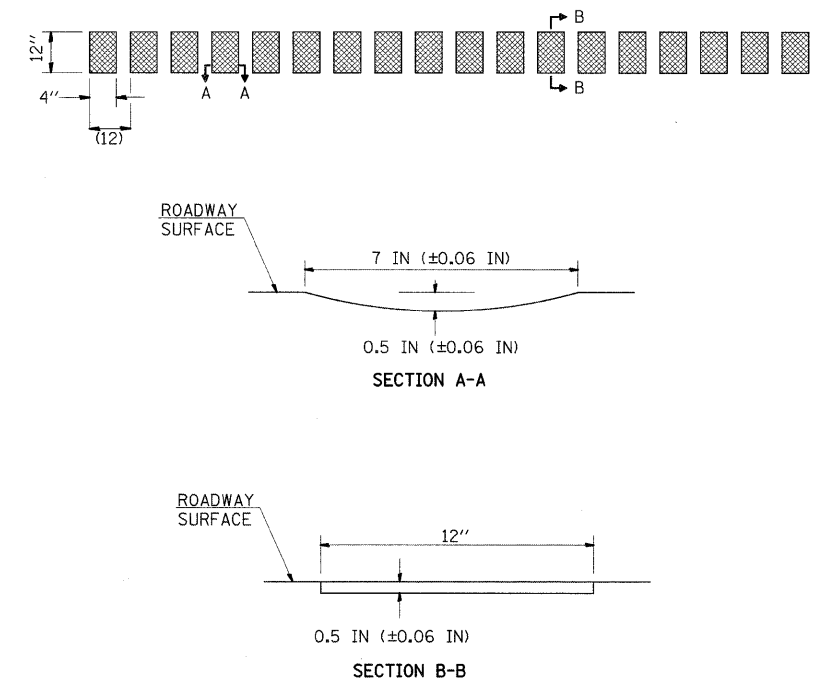
CENTER LINE RUMBLE STRIP SCHEDULE

STA	TO	STA	CENTER LINE RUMBLE STRIP
			(FOOT)
61+00	TO	119+27.13	5827
TOTAL:			5828

**SPEED REDUCTION PAVEMENT MARKING DETAIL**  
(SEE PLAN SHEETS FOR LOCATIONS)



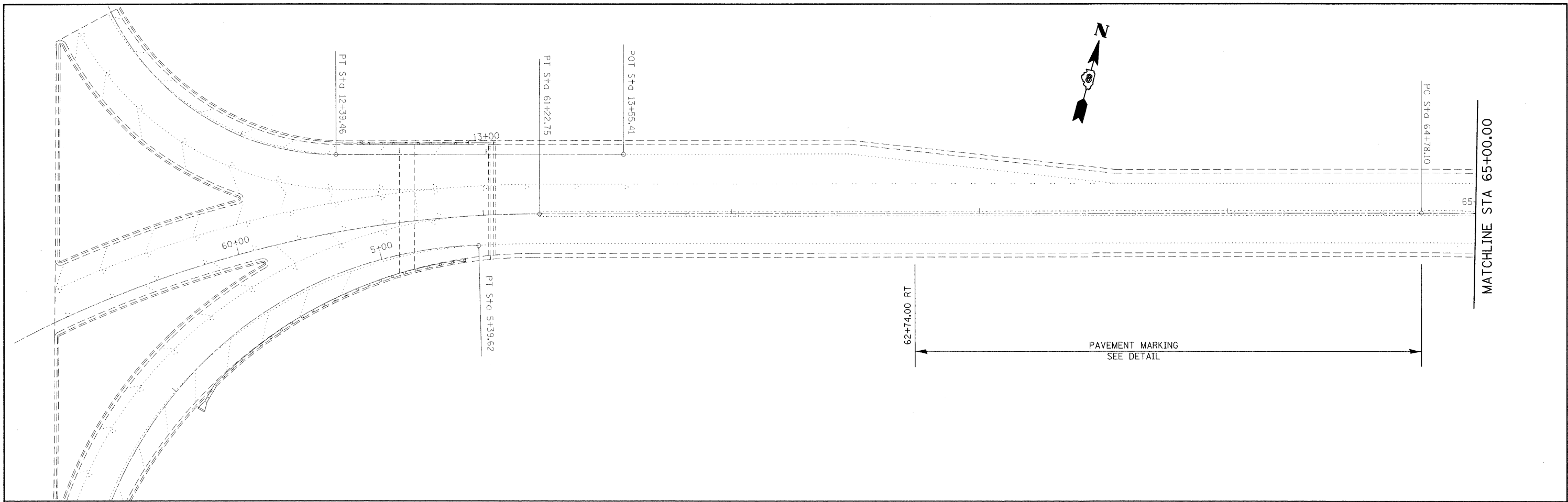
**CENTERLINE RUMBLE STRIP DETAIL**



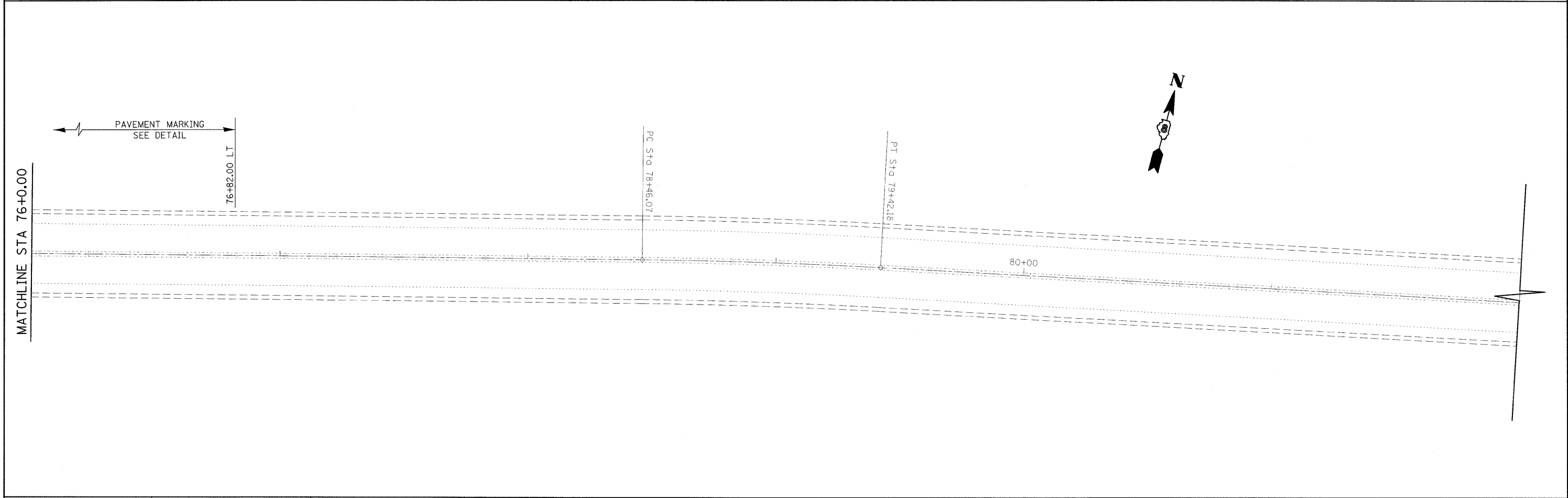
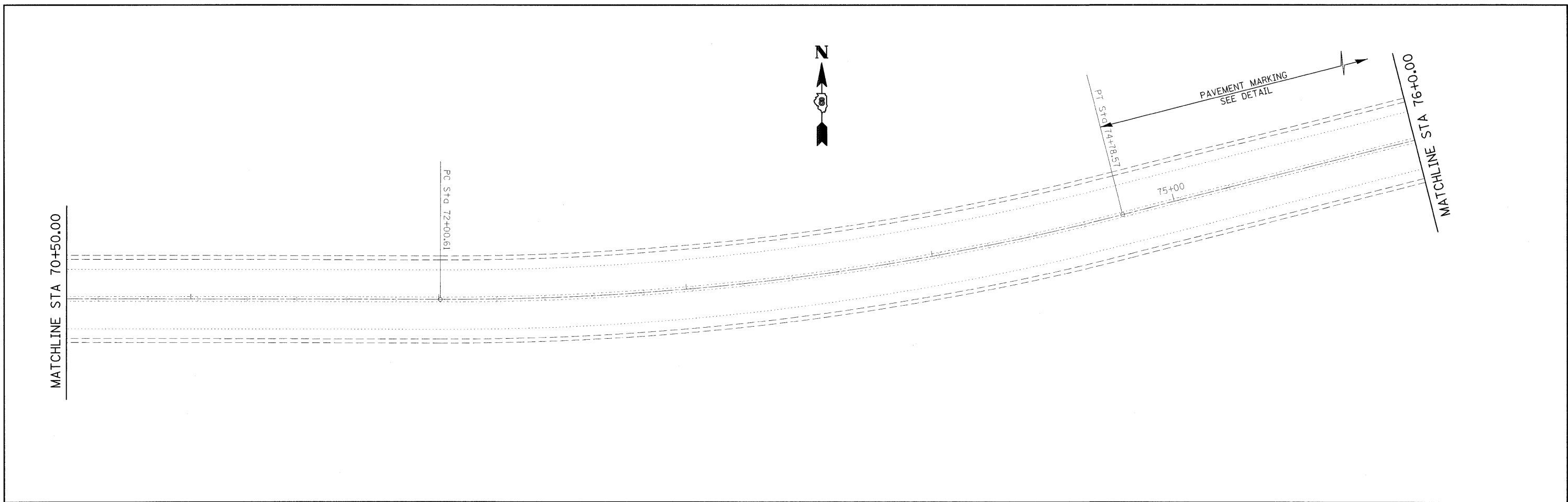
NOTE: THE PROPOSED CENTERLINE PAVEMENT MARKINGS SHALL BE PLACED AFTER THE CONSTRUCTION OF THE RUMBLE STRIP.

DRAWINGS ARE NOT TO SCALE

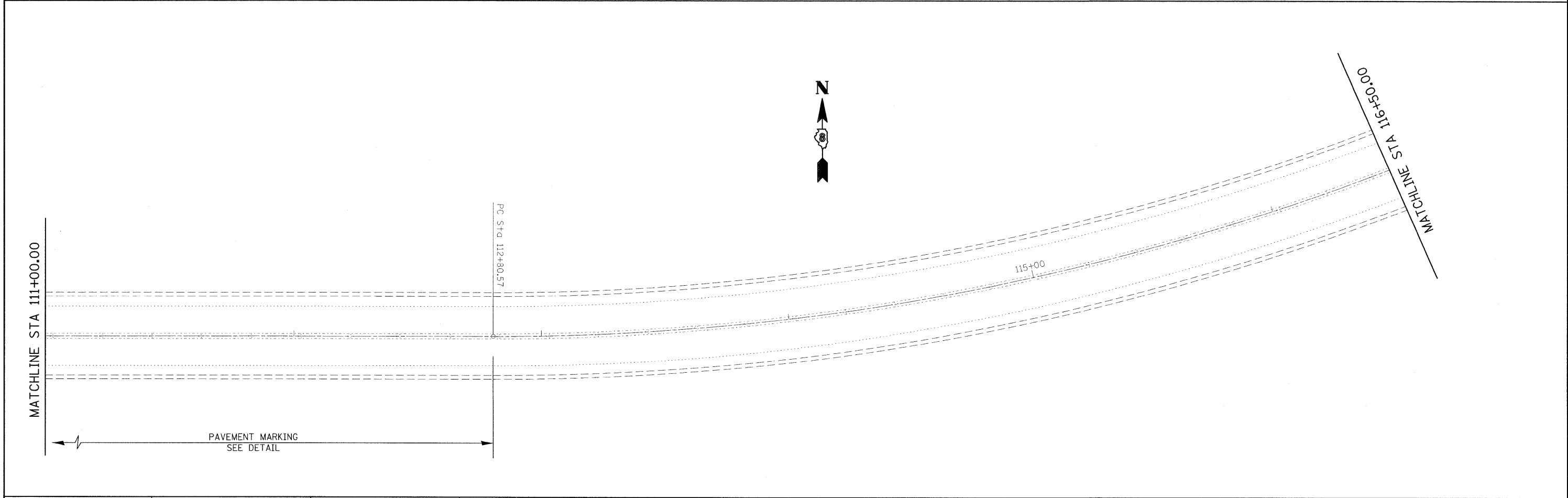
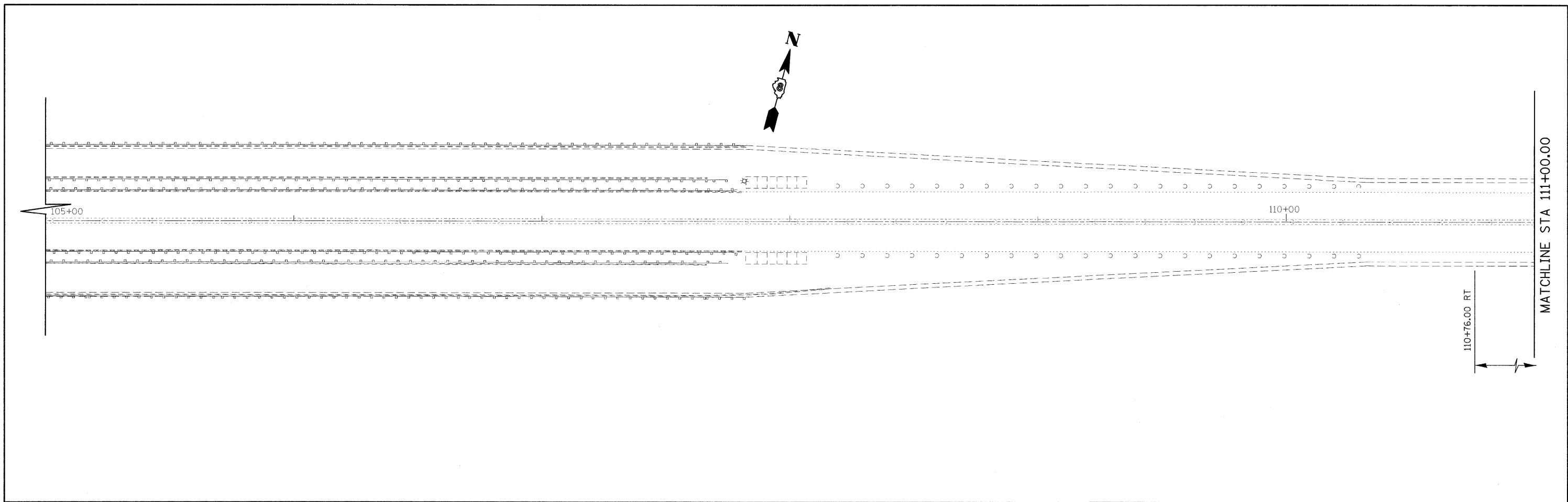
FILE NAME =	USER NAME = gelinh	DESIGNED -	REVISED -	<b>STATE OF ILLINOIS DEPARTMENT OF TRANSPORTATION</b>	----- ----- -----	F.A.U. RTE. 9105	SECTION 119-1-1	COUNTY MADISON	TOTAL SHEETS 9	SHEET NO. 5
ct:\pw_work\pwidot\gelinh\d0123580\087601-plan.dgn	PLOT SCALE = 50.0000' / IN.	DRAWN -	REVISED -			CONTRACT NO. 76D01				
	PLOT DATE = 1/30/2009	CHECKED -	REVISED -			ILLINOIS FED. AID PROJECT				
		DATE -	REVISED -			SCALE: _____ SHEET NO. ___ OF ___ SHEETS STA. _____ TO STA. _____				



FILE NAME =	USER NAME = gelinh	DESIGNED -	REVISED -	<b>STATE OF ILLINOIS DEPARTMENT OF TRANSPORTATION</b>	<b>PAVEMENT MARKING SHEET</b>	F.A.U. RTE.	SECTION	COUNTY	TOTAL SHEETS	SHEET NO.	
c:\pwork\pwork\gelinh\08123580\0876001-plan.dgn	PLOT SCALE = 20.0000' / IN.	DRAWN -	REVISED -			9105	119-1-1	MADISON	9	6	
	PLOT DATE = 2/5/2009	CHECKED -	REVISED -			SCALE: 1" = 20" SHEET NO. ___ OF ___ SHEETS STA. 59+21.00 TO STA. 70+50.00					
		DATE -	REVISED -			ILLINOIS FED. AID PROJECT					
						CONTRACT NO. 76D01					



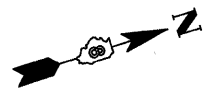
FILE NAME = c:\pwork\pwork\gelinh\20123580\087600\plan.dgn	USER NAME = gelinh	DESIGNED - ---	REVISED - ---	<b>STATE OF ILLINOIS DEPARTMENT OF TRANSPORTATION</b>	<b>PAVEMENT MARKING SHEET</b>			F.A.J. RTE. 9105	SECTION 119-I-1	COUNTY MADISON	TOTAL SHEETS 9	SHEET NO. 7
	PLOT SCALE = 20.0000' / IN.	CHECKED - ---	REVISED - ---		SCALE: 1" = 20"	SHEET NO. ___ OF ___ SHEETS	STA. 70+50.00 TO STA. 82+00.00	CONTRACT NO. 76D01				
	PLOT DATE = 2/5/2009	DATE - ---	REVISED - ---		ILLINOIS FED. AID PROJECT							



FILE NAME = c:\pwork\pwork\gelinh\20123580\087600\plan.dgn	USER NAME = gelinh	DESIGNED - ---	REVISED - ---	<b>STATE OF ILLINOIS DEPARTMENT OF TRANSPORTATION</b>	<b>PAVEMENT MARKING SHEET</b>			F.A.U. RTE. 9105	SECTION 119-I-1	COUNTY MADISON	TOTAL SHEETS 9	SHEET NO. 8
	PLOT SCALE = 20.0000' / IN.	DRAWN - ---	REVISED - ---		SCALE: 1" = 20"	SHEET NO. __ OF ___ SHEETS	STA. 105+00.00 TO STA. 116+50.00	CONTRACT NO. 76D01				
	PLOT DATE = 2/5/2009	CHECKED - ---	REVISED - ---		ILLINOIS FED. AID PROJECT							
		DATE - ---	REVISED - ---									



MATCHLINE STA 116+50.00

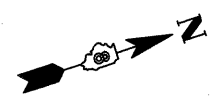


PAVEMENT MARKING  
SEE DETAIL

121+25.00 LT

MATCHLINE STA 120+00.00

MATCHLINE STA 120+00.00



PT STA 124+70.47=  
EXIST. STA 265+74.82

PC STA 122+81.27

FILE NAME = c:\pwork\pwidot\gelnh\02123500\0876001-plan.dgn	USER NAME = gelnh	DESIGNED -	REVISED -	<b>STATE OF ILLINOIS</b> <b>DEPARTMENT OF TRANSPORTATION</b>	<b>PAVEMENT MARKING SHEET</b>	F.A.U. RTE. 9105	SECTION 119-1-1	COUNTY MADISON	TOTAL SHEETS 9	SHEET NO. 9			
	PLOT SCALE = 20,0000' / IN.	CHECKED -	REVISED -			SCALE: 1" = 20"	SHEET NO. _ OF _ SHEETS	STA. 116+50.00 TO STA. 268+00.00	CONTRACT NO. 76D01				
	PLOT DATE = 2/5/2003	DATE -	REVISED -			ILLINOIS FED. AID PROJECT							