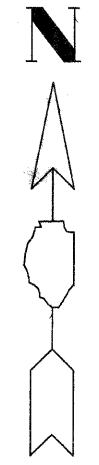
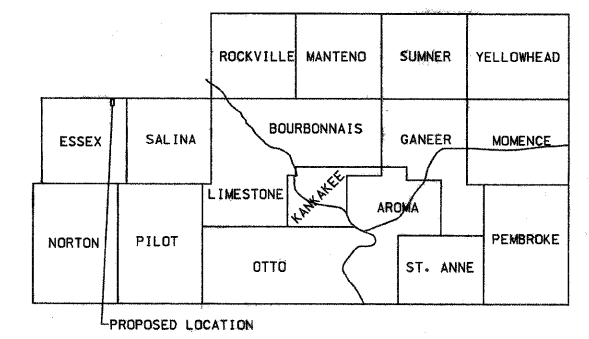


ROUTE NO.	SECTION	COUNTY	NO. SHEETS	SHEET NO.
C.H. 48	*	Kankakee	56	1
PROJECT NO. BROS-0091		CONTRACT NO. 87374		
* 85-00221-00-BR				

INDEX OF SHEETS

SHEET NO.	DESCRIPTION
1	COVER SHEET
2	GENERAL NOTES, PAVEMENT DESIGN & LEGEND
3	CENTERLINE TIES
4	TEMPORARY CONSTRUCTION EASEMENTS
5	SUMMARY OF QUANTITIES
6-7	TYPICAL SECTIONS
8	INTERSECTION AND ENTRANCE DETAILS
9-13	SCHEDULE OF QUANTITIES
14-22	PLAN/PROFILE SHEETS
23-27	TRAFFIC CONTROL PLAN
24-28	EROSION CONTROL PLAN
29-36	BRIDGE PLANS
37-56	CROSS SECTIONS

STATE OF ILLINOIS
DEPARTMENT OF TRANSPORTATION
COUNTY OF KANKAKEE
DEPARTMENT OF HIGHWAYS
PLANS FOR PROPOSED
BRIDGE REPLACEMENT AND
REHABILITATION PROGRAM
COUNTY HIGHWAY 48
SECTION 85-00221-00-BR
PROJECT NO. BROS-0091(126)
JOB NO. C-93-008-09



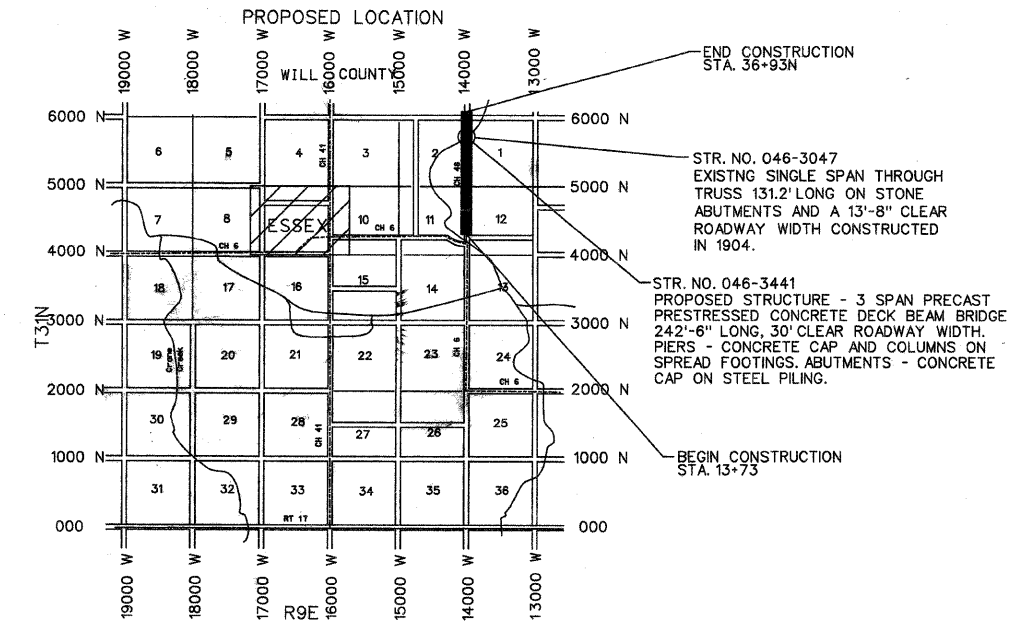
CLASS III ROAD
CURRENT A.D.T. = 600
DESIGN A.D.T. = 732
DESIGN SPEED = 50 M.P.H.

THE ACCEPTANCE OF THIS PROJECT IS
BASED ON THE MINIMUM DESIGN CRITERIA
FOR A B.R.R.P. TYPE INVOLVEMENT.

STANDARDS

000001-05	STANDARD SYMBOLS, ABBREVIATIONS AND PATTERNS
280001-04	TEMPORARY EROSION CONTROL SYSTEMS
482001-02	HMA SHOULDER ADJACENT TO FLEXIBLE PAVEMENT
515001-03	NAME PLATE FOR BRIDGES
630001-08	STEEL PLATE BEAM GUARDRAIL
635006-03	REFLECTOR AND TERMINAL MARKER PLACEMENT
666001-01	RIGHT OF WAY MARKERS
701001-02	OFF-RD OPERATIONS, 2L, 2W, MORE THAN 15' AWAY
701006-03	OFF-RD OPERATIONS, 2L, 2W, 15' TO 24" FROM PAVEMENT EDGE
701201-03	LANE CLOSURE, 2L, 2W, DAY ONLY, FOR SPEEDS ≥ 45 MPH
701301-03	LANE CLOSURE, 2L, 2W, SHORT TIME OPERATIONS
701306-02	LANE CLOSURE, 2L, 2W, SLOW MOVING OPERATIONS DAY ONLY, FOR SPEEDS ≥ 45 MPH
701311-03	LANE CLOSURE, 2L, 2W, MOVING OPERATIONS - DAY ONLY
701901-01	TRAFFIC CONTROL DEVICES
BLR 21-8	TYPICAL APPLICATIONS OF TRAFFIC CONTROL DEVICES
BLR 23-3	TRAFFIC BARRIER TERMINAL, TYPE 1
BLR 27-1	TRAFFIC BARRIER TERMINAL, TYPE 5A

SCALES:
PLAN 1" = 40'
PROFILE 1" = 40'
HORIZONTAL 1" = 40'
VERTICAL 1" = 5'
CROSS SECTIONS 1" = 5'



LOCATION MAP

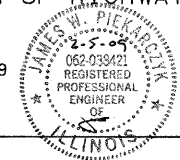
LENGTH OF PROPOSED IMPROVEMENT 9,366.08 FOOT
1.774 MILES

CONTRACT NO. 87374

PRIOR TO EXCAVATION, CALL JOINT UTILITIES LOCATION
INFORMATION FOR EXCAVATORS (J.U.L.I.E.) AT 1-800-892-0123

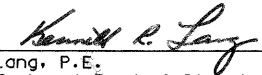
STATE OF ILLINOIS
DEPARTMENT OF TRANSPORTATION
DIVISION OF HIGHWAYS

Submitted 2-5 2009




James W. Piekarczyk, P.E.
County Engineer

Approved 02-10 2009



Kenneth R. Lang, P.E.
Bureau Chief, Local Roads & Streets

Approved 02-10 2009



George F. Ryan, P.E.
Deputy Director of Highways/Region Two Engineer