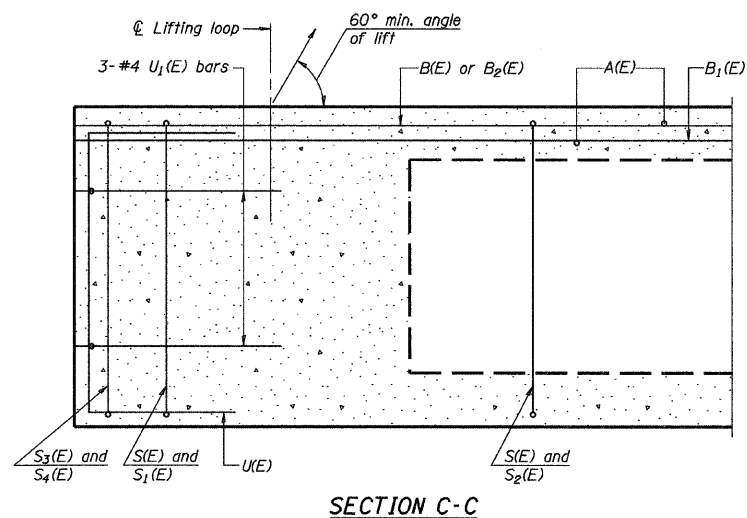
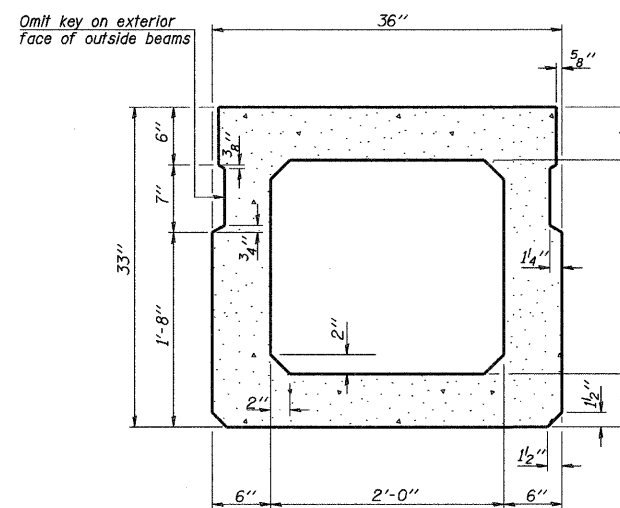


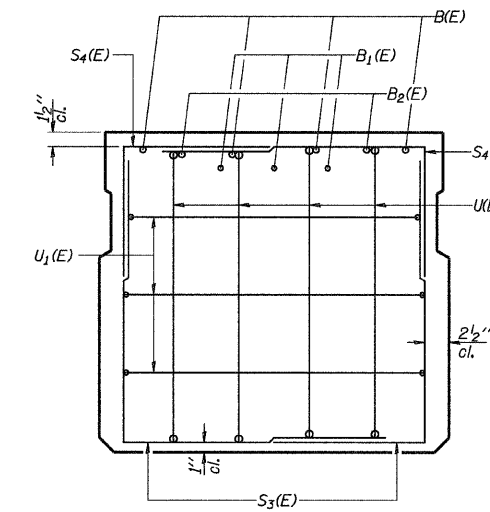
ROUTE NO.	SECTION	COUNTY	TOTAL SHEETS	SHEET NO.
CH 48	*	Kankakee	56	34
FED. ROAD DIST. NO. 7	ILLINOIS	FED. AID PROJECT-		



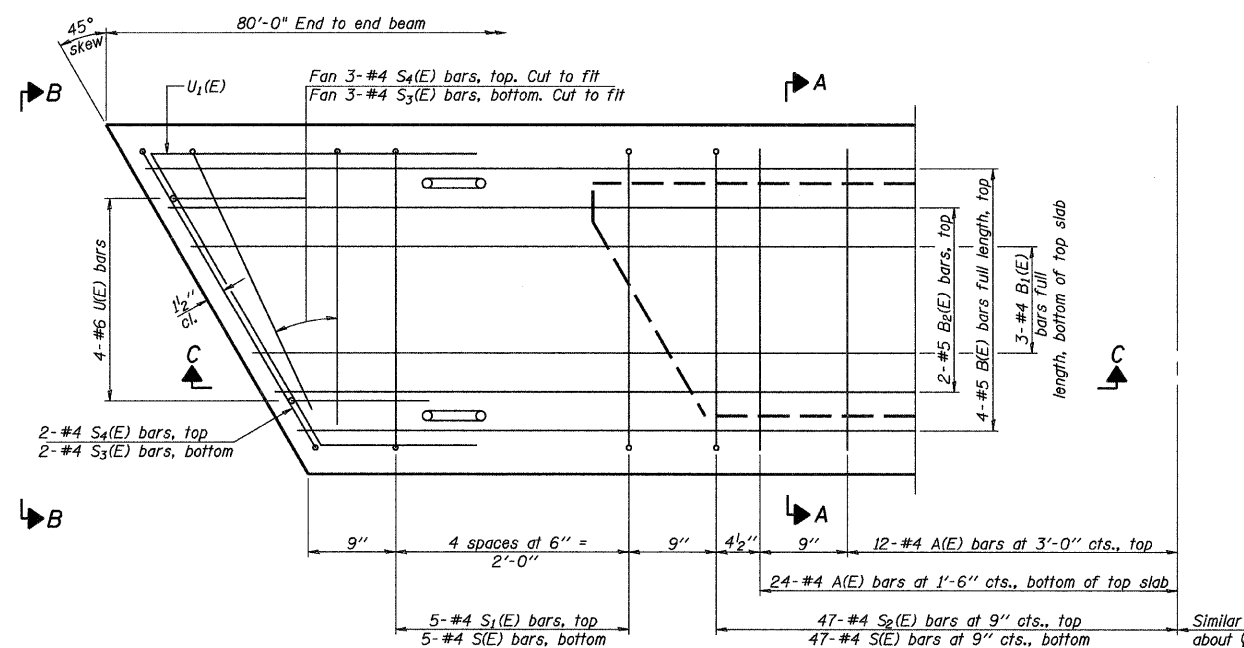
SECTION C-C



SECTION A-A
(Showing dimensions)

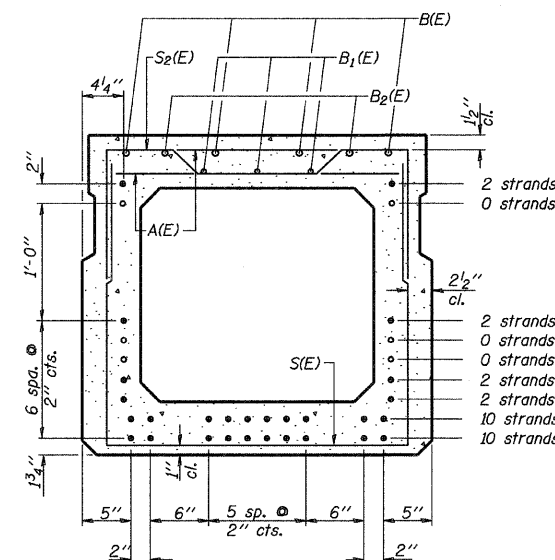


VIEW B-B



PLAN VIEW

Note: Spacing of S1(E) and S2(E) bars may be adjusted up to 4" in the immediate area of the transverse tie diaphragms to miss the block outs for the transverse ties.

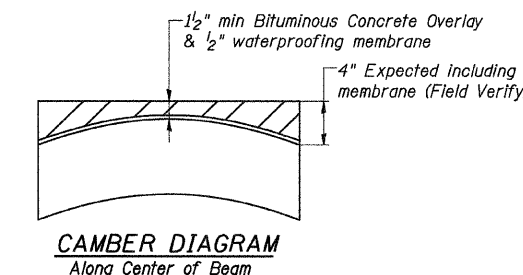


STRAND PATTERN 28SS:
10 strands @ 1 3/4" up, 10 strands @ 3 3/4" up,
2 strands @ 5 3/4" up, 2 strands @ 7 3/4" up,
2 strands @ 13 3/4" up, 2 strands @ 27 3/4" up

SECTION A-A

(Showing reinforcement and permissible strand locations)

Note: Place the number of strands specified in each row symmetrically about the centerline of beam in the permissible strand locations shown.



CAMBER DIAGRAM
Along Center of Beam

BAR LIST
ONE BEAM ONLY
(For information only)

Bar	No.	Size	Length	Shape
A(E)	72	#4	2'-7"	—
B(E)	20	#5	18'-0"	—
B1(E)	15	#4	18'-0"	—
B2(E)	4	#5	16'-0"	—
S(E)	104	#4	7'-5"	—
S1(E)	10	#4	6'-3"	—
S2(E)	94	#4	6'-6"	—
S3(E)	10	#4	4'-10"	—
S4(E)	10	#4	4'-3"	—
U(E)	8	#6	5'-0"	—
U1(E)	6	#4	9'-6"	—

Note: See sheet 2 of 2 for additional details and Bill of Material.

DSGN	K.J. Hoffmann				
DR	K.J. Hoffmann				
CHK	J.R. Wolf				
APVD	J.A. Frauenhoffer	NO.	DATE	REVISION	BY