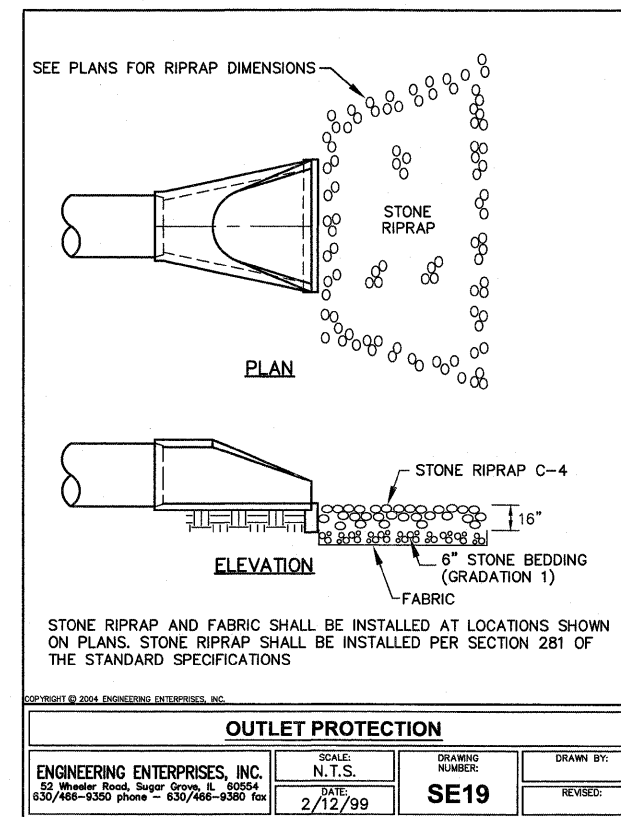
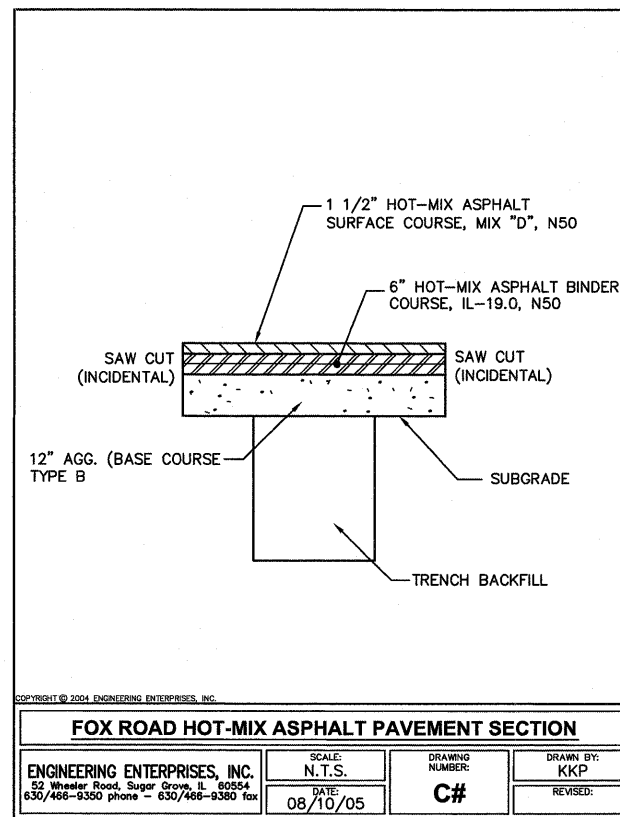


NOTE:
SEE FOX ROAD HOT-MIX ASPHALT PAVEMENT SECTION DETAIL FOR PROPOSED HOT-MIX ASPHALT THICKNESS.



Plotted: Jan 26, 2009 @ 11:27am - Plotted By: kyoung - Tab: 17-DETS (22x34)

COPYRIGHT © 2009 ENGINEERING ENTERPRISES, INC.

	Engineering Enterprises, Inc. Consulting Engineers 52 Wheeler Road Sugar Grove, Illinois 60554 630/466-9350
	UNITED CITY OF YORKVILLE 800 GAME FARM ROAD YORKVILLE, ILLINOIS 60560

NO.	DATE	REVISIONS
1	01/28/09	PER IDOT REVIEW

FOX ROAD LAPP IMPROVEMENTS

DETAILS

DATE:	SEPT, 2008
PROJECT NO:	Y00815
FILE NO:	Y00815-CVR
SHEET	17 of 20

PATH = H:\3058901\Y00815\dwg\Y00815-Cvr.dwg