

NORTHEAST QUARTER SECTION 15,
TOWNSHIP 9 NORTH, RANGE 4 WEST
OF THE 4TH PRINCIPAL MERIDIAN

- LEGEND**
- PROPOSED RIGHT OF WAY LINE
 - - - EXISTING RIGHT OF WAY LINE
 - ||||| PROPOSED TEMPORARY EASEMENT LINE
 - P PROPERTY LINE
 - - - EXISTING CENTERLINE



STATION/OFFSET SCHEDULE

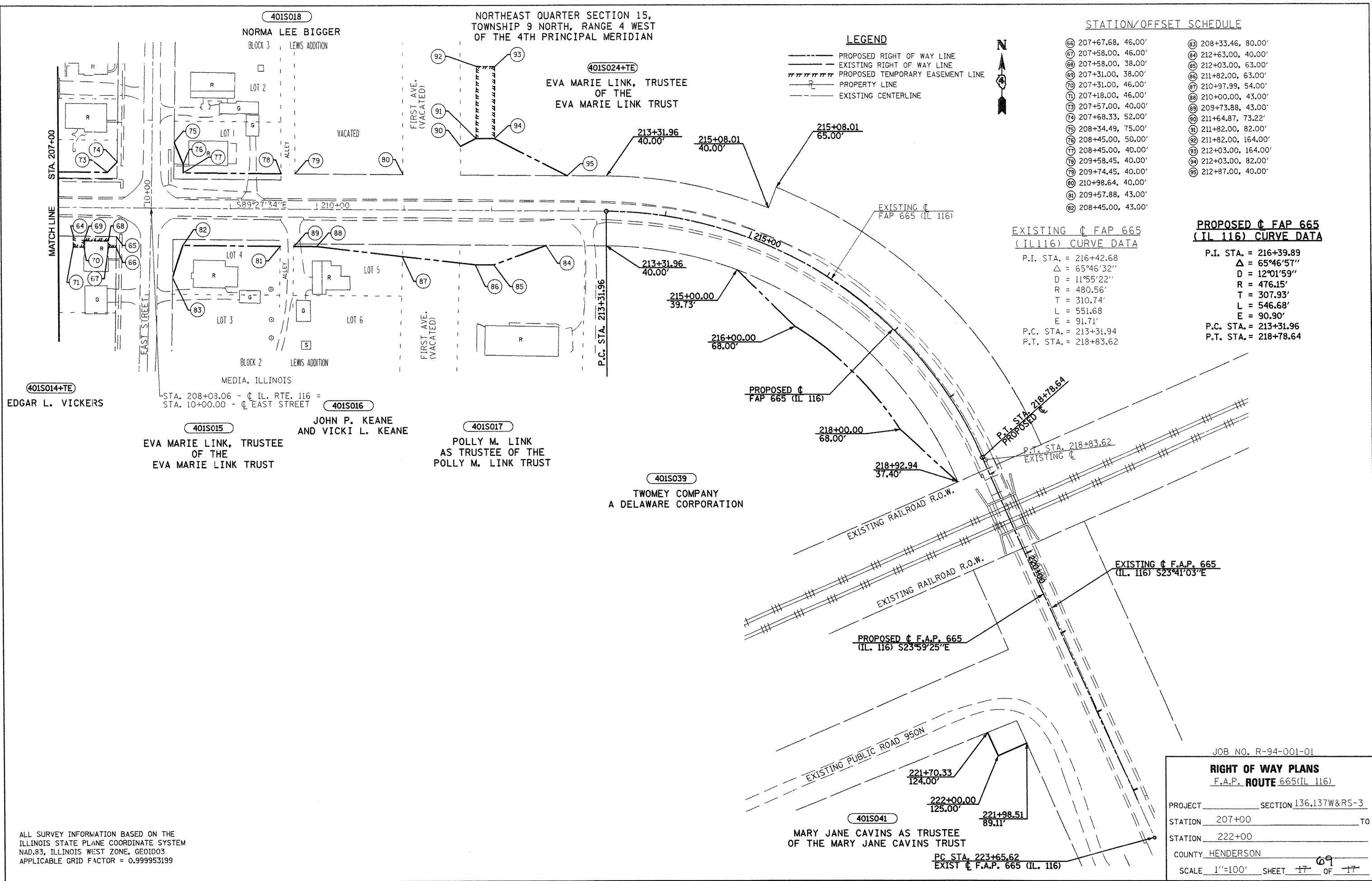
66	207+67.68, 46.00'	83	208+33.46, 80.00'
67	207+58.00, 46.00'	84	212+63.00, 40.00'
68	207+58.00, 38.00'	85	212+03.00, 63.00'
69	207+31.00, 38.00'	86	211+82.00, 63.00'
70	207+31.00, 46.00'	87	210+97.99, 54.00'
71	207+18.00, 46.00'	88	210+00.00, 43.00'
72	207+57.00, 40.00'	89	209+73.88, 43.00'
73	207+68.33, 52.00'	90	211+64.87, 73.22'
74	208+34.49, 75.00'	91	211+82.00, 82.00'
75	208+45.00, 50.00'	92	211+82.00, 164.00'
76	208+45.00, 40.00'	93	212+03.00, 164.00'
77	209+58.45, 40.00'	94	212+03.00, 82.00'
78	209+74.45, 40.00'	95	212+87.00, 40.00'
79	210+98.64, 40.00'		
80	209+57.88, 43.00'		
81	208+45.00, 43.00'		
82			

**EXISTING C FAP 665
(IL116) CURVE DATA**

P.I. STA. = 216+42.68
 Δ = 65°46'32"
 D = 11°55'22"
 R = 480.56'
 T = 310.74'
 L = 551.68
 E = 91.71'
 P.C. STA. = 213+31.94
 P.T. STA. = 218+83.62

**PROPOSED C FAP 665
(IL 116) CURVE DATA**

P.I. STA. = 216+39.89
 Δ = 65°46'57"
 D = 12°01'59"
 R = 476.15'
 T = 307.93'
 L = 546.68'
 E = 90.90'
 P.C. STA. = 213+31.96
 P.T. STA. = 218+78.64



APPROVED BY _____ DISTRICT ENGINEER
 DATE _____

DRAWN BY _____
 WRITTEN BY _____
 CHECKED BY _____
 INSPECTED BY _____

ALL SURVEY INFORMATION BASED ON THE
 ILLINOIS STATE PLANE COORDINATE SYSTEM
 NAD.83, ILLINOIS WEST ZONE, GEOID03
 APPLICABLE GRID FACTOR = 0.999953199

JOB NO. R-94-001-01

RIGHT OF WAY PLANS
 F.A.P. ROUTE 665 (IL 116)

PROJECT _____ SECTION 136.137W&RS-3

STATION 207+00 TO _____

STATION 222+00

COUNTY HENDERSON

SCALE 1"=100' SHEET 17 OF 17