

W20-1(0)-48

1000' minimum,
1500' maximum
from start of
curve on
north end



W1-2L(0)-48

W13-1(0)-2424

3.5
MPH

500' from
start of curve
on north end



W1-6L(0)-6030
(Above barricade)

Stage II Removal

Remove South Leg of "Wye"
Remove Pavement Sta 7+16 to Sta 11+91 (see detail)
Remove south half of culvert Sta 7+00

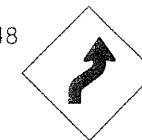
Stage II Construction

none

Stage II Traffic Control

Traffic Control and Protection (Special)
Traffic shifts north to Temp Pavement and existing Westbound Lane
Type III Pavement marking tape Sta 0+00 to 2+00
Type III Pavement marking tape Sta 5+75 to 12+91

W1-4R(0)-48



W13-1(0)-2424

3.5
MPH

500' from
start of taper
on east end



W20-1(0)-48

1000' minimum,
1500' maximum
from start of
taper on east end

LEGEND

Temporary Pavement

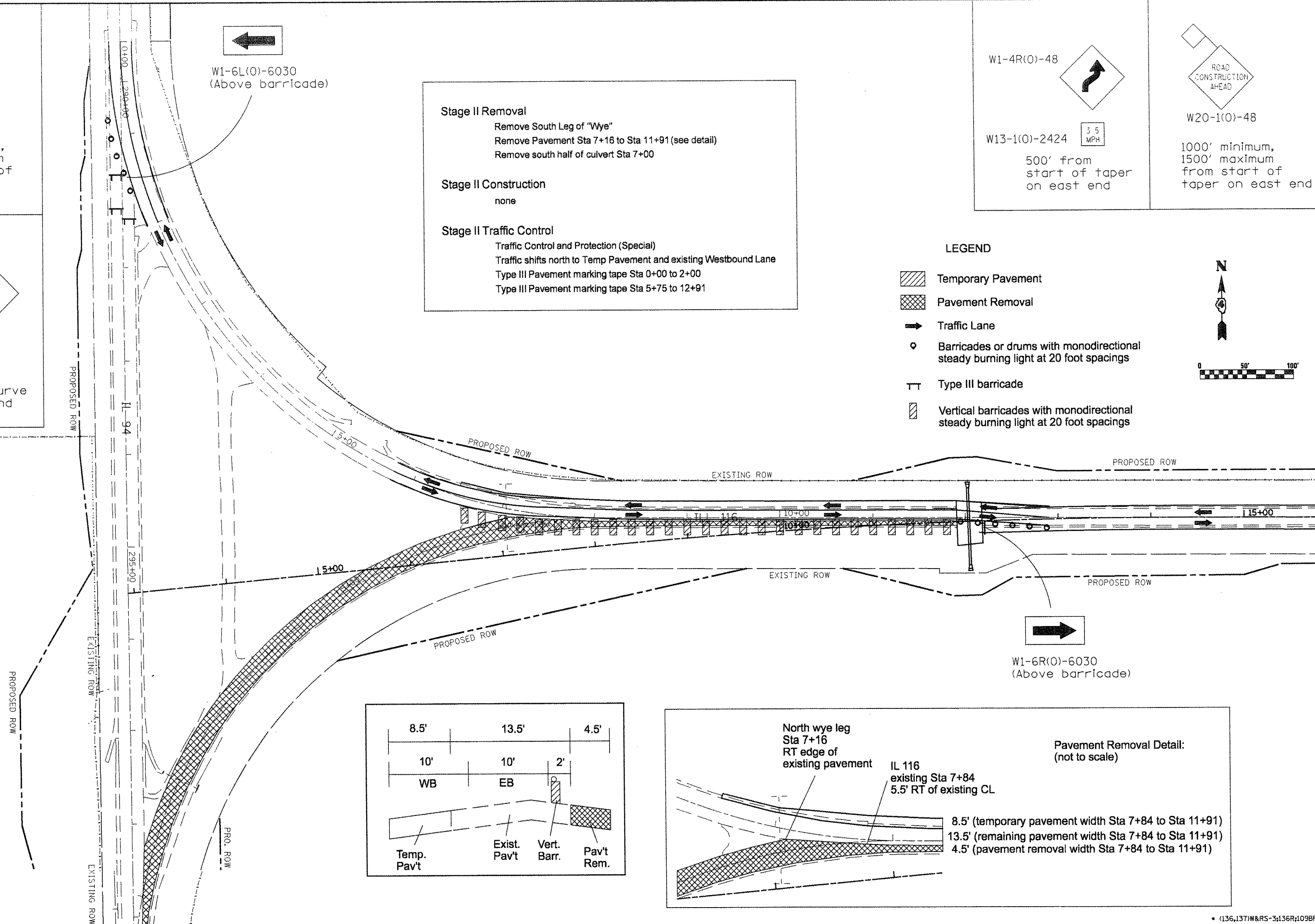
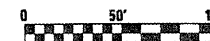
Pavement Removal

Traffic Lane

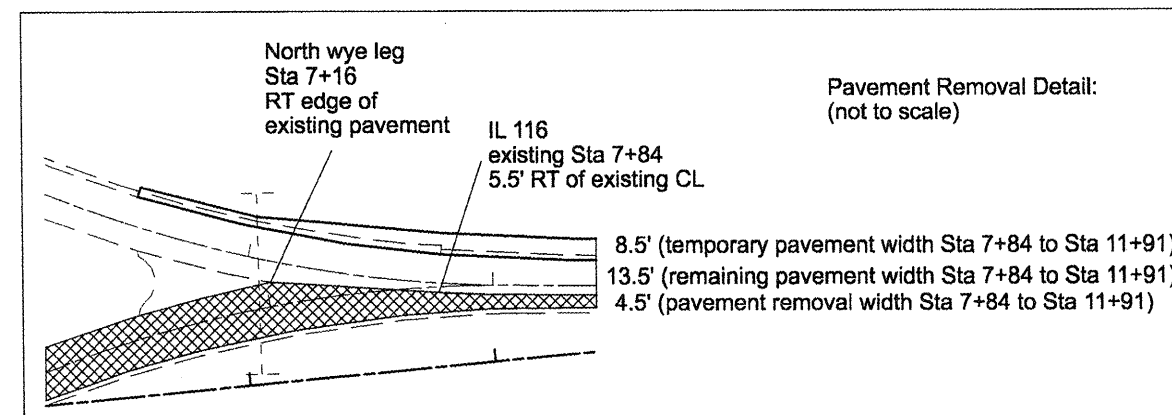
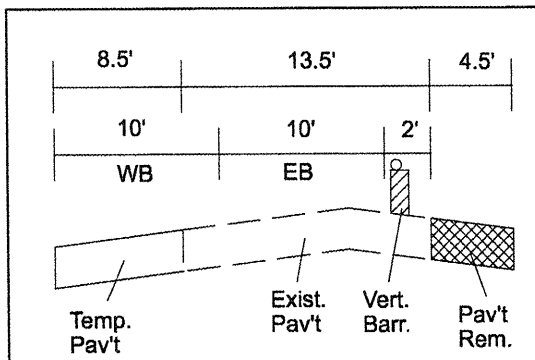
Barricades or drums with monodirectional steady burning light at 20 foot spacings

Type III barricade

Vertical barricades with monodirectional steady burning light at 20 foot spacings



W1-6R(0)-6030
(Above barricade)



• (136,137)W&RS-3;136R;109BR-2

FILE NAME =
staging.dgn

USER NAME = hudelsonme

DESIGNED -

REVISED -

PLOT SCALE = 100.0000' / IN.

DRAWN -

REVISED -

PLOT DATE = 1/29/2009

CHECKED -

REVISED -

**STATE OF ILLINOIS
DEPARTMENT OF TRANSPORTATION**

**SUGGESTED STAGES OF
CONSTRUCTION - STAGE II**

F.A.P.
RTE.
665

SECTION

COUNTY

TOTAL SHEETS

SHEET NO.

HENDERSON

71

CONTRACT NO. 88773

SCALE: SHEET NO. OF SHEETS STA. TO STA.

ILLINOIS FED. AID PROJECT