

W20-1(0)-48

1000' minimum,
1500' maximum
from start of
barrels on
north end



W1-6L(0)-6030
(Above barricade)

Stage III Removal

Remove Pavement IL 94
Pavement Breaking IL 94

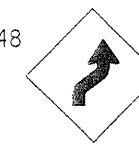
Stage III Construction

Construct IL 94 Sta 291+57 to 298+50
Construct IL 116 EB & WB Sta 2+93.34 to 8+00
Construct IL 116 EB Sta 8+00 to 11+91
Construct south Temporary Pavement RT Sta 6+25 to 11+91
Construct south Temporary Pavement RT Sta 12+18 to 13+41

Stage III Traffic Control

Traffic Control and Protection (Special)
Traffic shifts north to Temp Pavement and existing Westbound Lane (same as Stage II)
Type III Pavement marking tape Sta 0+00 to 2+00
Type III Pavement marking tape Sta 5+75 to 12+91

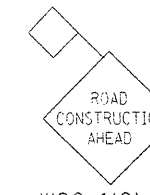
W1-4R(0)-48



W13-1(0)-2424



500' from
start of taper
on east end



W20-1(0)-48

1000' minimum,
1500' maximum
from start of
taper on
east end

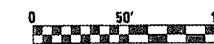
W1-2L(0)-48



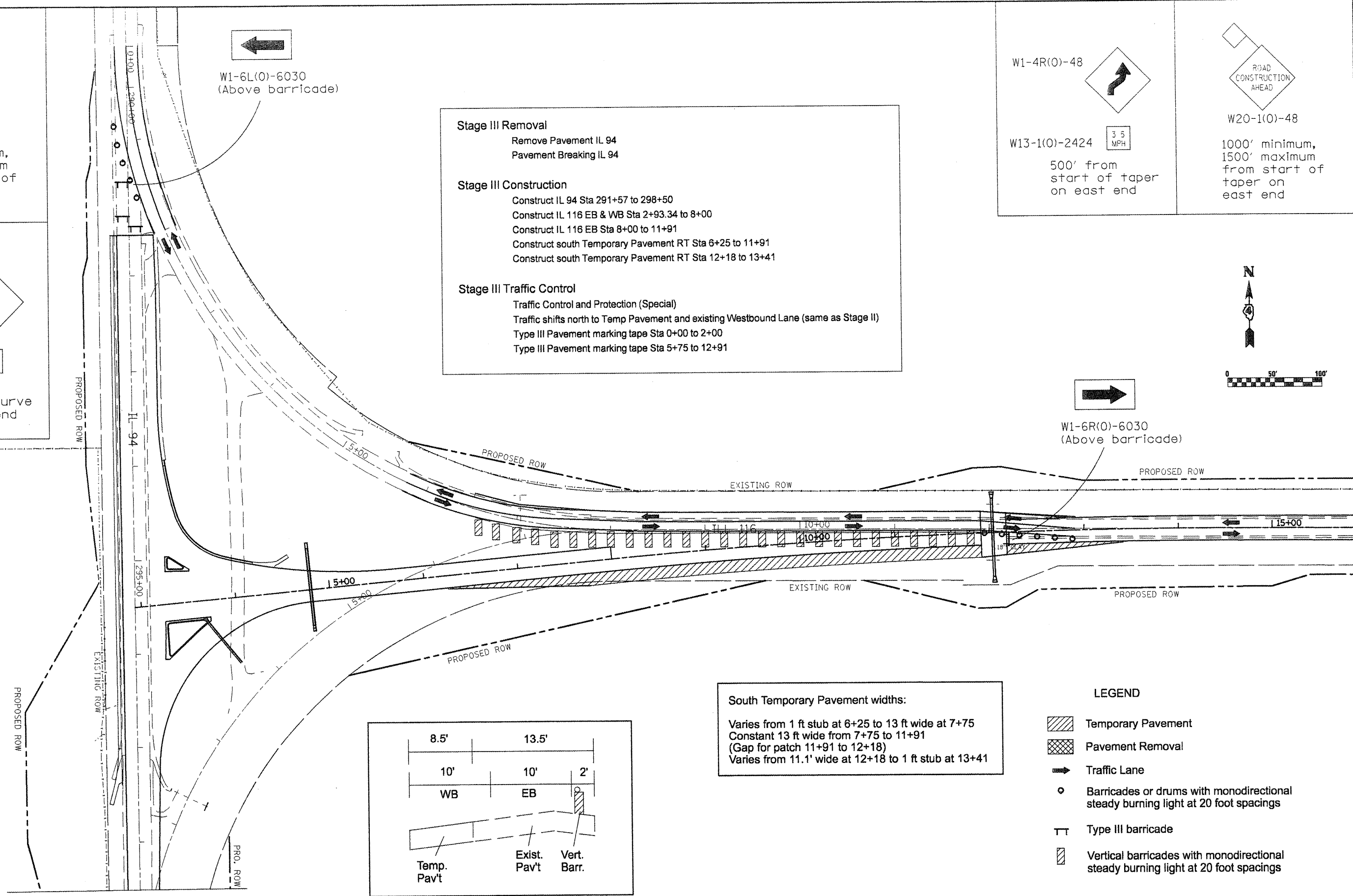
W13-1(0)-2424



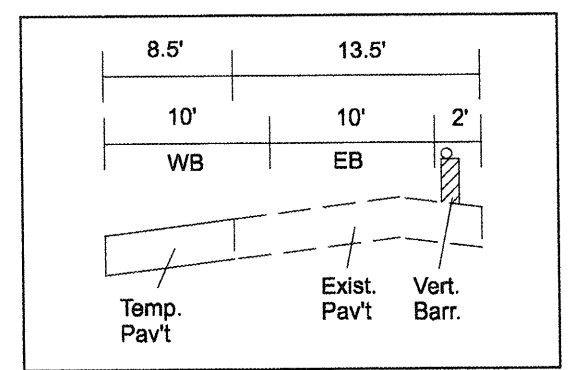
500' from
start of curve
on north end



W1-6R(0)-6030
(Above barricade)



South Temporary Pavement widths:
Varies from 1 ft stub at 6+25 to 13 ft wide at 7+75
Constant 13 ft wide from 7+75 to 11+91
(Gap for patch 11+91 to 12+18)
Varies from 11.1' wide at 12+18 to 1 ft stub at 13+41



LEGEND

- Temporary Pavement
- Pavement Removal
- Traffic Lane
- Barricades or drums with monodirectional steady burning light at 20 foot spacings
- Type III barricade
- Vertical barricades with monodirectional steady burning light at 20 foot spacings

• (136,137)W&RS-3;136R109BR-2

FILE NAME = staging.dgn

USER NAME = hudelsonne	DESIGNED -	REVISED -
PLOT SCALE = 1/8" = 100.0000' / IN.	DRAWN -	REVISED -
PLOT DATE = 1/29/2009	CHECKED -	REVISED -
	DATE -	REVISED -

**STATE OF ILLINOIS
DEPARTMENT OF TRANSPORTATION**

SUGGESTED STAGES OF CONSTRUCTION - STAGE III			
SCALE:	SHEET NO.	OF SHEETS	STA. TO STA.

F.A.P. RTE. 665	SECTION	COUNTY HENDERSON	TOTAL SHEETS 77	SHEET NO. 77
CONTRACT NO. 88773				
ILLINOIS FED. AID PROJECT				