

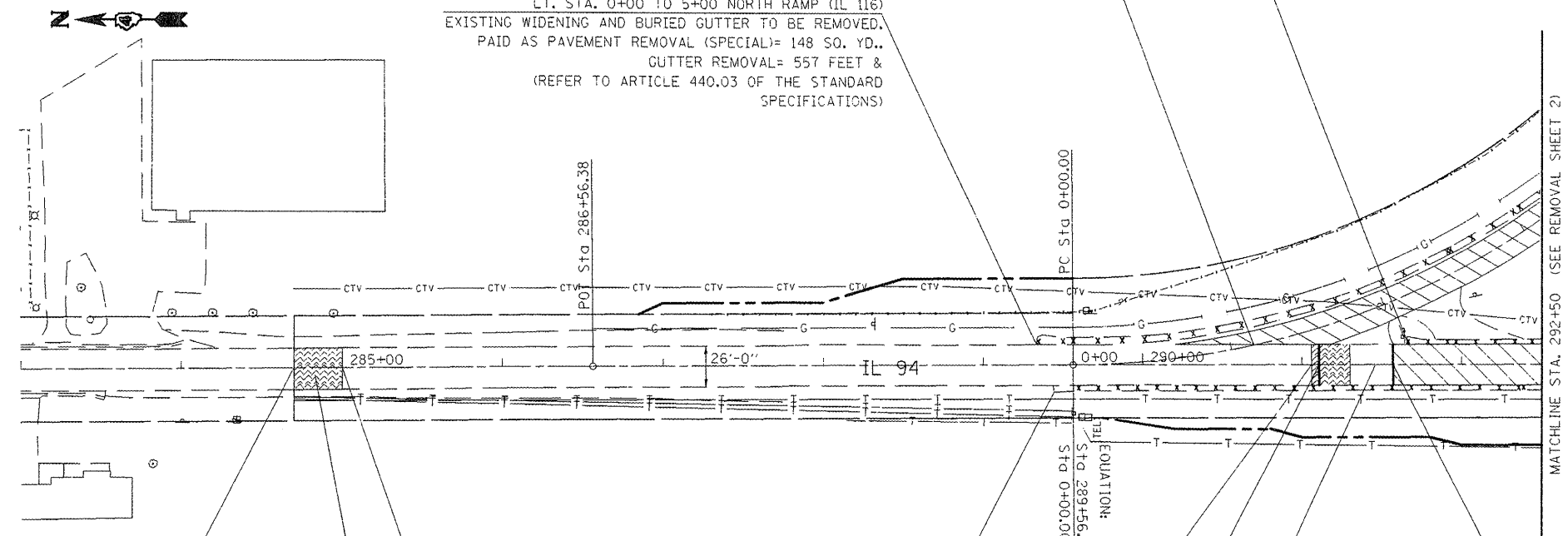
WILLIAM & SHIRLEY GULLBERG TRUST

FENCE REMOVAL = 3,069 FEET  
 (DUE TO THE SURVEY NOT BEING UP TO DATE, FENCE  
 REMOVAL WAS CALCULATED BY USING THE APPRAISAL RECORDS  
 FOR INDIVIDUAL PROPERTY OWNERS)

LT. STA. 291+66 TO 292+86  
 GUTTER REMOVAL= 120 FEET  
 (REFER TO ARTICLE 440.03 OF THE  
 STANDARD SPECIFICATIONS)

NORTH LEG OF WYE- PC STA. 0+00 TO PT STA. 8+08.4  
 PAVEMENT REMOVAL=  
 1646 SQ. YD.  
 (SEE SPECIAL PROVISION)

LT. STA. 0+00 TO 5+00 NORTH RAMP (IL 116)  
 EXISTING WIDENING AND BURIED GUTTER TO BE REMOVED.  
 PAID AS PAVEMENT REMOVAL (SPECIAL)= 148 SQ. YD.,  
 GUTTER REMOVAL= 557 FEET &  
 (REFER TO ARTICLE 440.03 OF THE STANDARD  
 SPECIFICATIONS)



STA. 285+00 TO 291+00  
 HMA SURFACE REMOVAL, 1/2"  
 =1734 SQ. YD.

RT. STA. 289+42 TO 292+86  
 GUTTER REMOVAL= 344 FEET  
 (REFER TO 440.03 OF THE STANDARD  
 SPECIFICATIONS)

STA. 291+00 TO 291+10.8  
 HMA SURFACE REMOVAL-VARIABLE DEPTH = 31.2 SQ. YD.  
 SEE DETAIL (IL 94 - NORTH PAVEMENT CONNECTION)

STA. 291+57 TO 292+86  
 PAVEMENT REMOVAL= 373 SQ. YD.  
 (SEE SPECIAL PROVISION)  
 SEE DETAIL (IL 94 - NORTH PAVEMENT CONNECTION)

STA. 291+10.8 TO 291+31  
 HMA SURFACE REMOVAL-VARIABLE DEPTH = 58.4 SQ. YD.  
 SEE DETAIL (IL 94 - NORTH PAVEMENT CONNECTION)

STA. 291+31 TO 291+57  
 EXIST. PAVEMENT TO REMAIN IN PLACE  
 SEE DETAIL (IL 94 - NORTH PAVEMENT CONNECTION)

STA. 284+70 TO 285+00  
 HMA SURFACE REMOVAL-BUTT JOINT  
 =87 SQ. YD.

STA. 284+70  
 IMPROVEMENT BEGINS

**LEGEND**

	PAVEMENT REMOVAL
	PAVEMENT BREAKING
	HMA SURFACE REMOVAL-BUTT JOINT

MIN. DEPTH	UTILITY	COMPANY
4'-0"	PETROLEUM	BUCKEYE PARTNERS, L.P.
4'-0"	OIL	BP AMOCO
2'-6"	TELEPHONE	FRONTIER COMMUNICATIONS
2'-0"	CABLE T.V.	MEDIACOM COMMUNICATIONS
3'-0"	ELECTRIC	AMEREN IP
2'-6"	NATURAL GAS	NICOR
4'-0"	WATER	DALLAS RURAL WATER DIST.

**PLAN NOTES**

- \*REMOVAL OF SAPLINGS, BUSHES AND ROOTS SHALL BE REMOVED AND DISPOSED OF AS REQUIRED BY ARTICLE 201
- \*SEE TREE REMOVAL TABLE FOR STATIONING AND QUANTITY
- \*REFER TO THE GENERAL NOTE AND/OR THE UNDERDRAIN, SPECIAL DETAIL IF ANY PIPE UNDERDRAINS OR FIELD TILE ARE ENCOUNTERED DURING CONSTRUCTION
- \*DUE TO THE POOR CONDITION OF THE EXISTING E.O.P ALONG BOTH SIDES OF IL ROUTE 116, QUANTITIES WERE INCLUDED FOR THE CONTRACTOR TO SAW CUT AND REMOVE PAVEMENT AT THE LOCATIONS AND WIDTHS SPECIFIED IN THE EXISTING TYPICALS. THIS WORK SHALL BE PAID FOR AS EITHER PAVEMENT REMOVAL AND/OR PAVEMENT REMOVAL, SPECIAL.