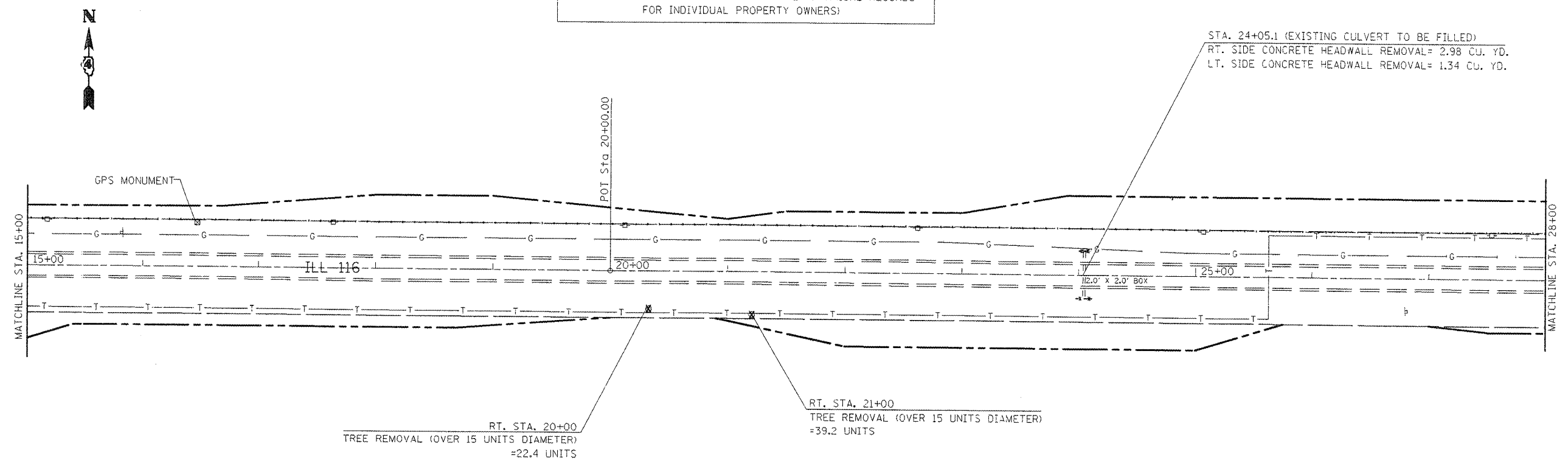


WILLIAM & SHIRLEY GULLBERG TRUST

FENCE REMOVAL = 3,069 FEET  
 (DUE TO THE SURVEY NOT BEING UP TO DATE, FENCE  
 REMOVAL WAS CALCULATED BY USING THE APPRAISAL RECORDS  
 FOR INDIVIDUAL PROPERTY OWNERS)

STA. 24+05.1 (EXISTING CULVERT TO BE FILLED)  
 RT. SIDE CONCRETE HEADWALL REMOVAL= 2.98 CU. YD.  
 LT. SIDE CONCRETE HEADWALL REMOVAL= 1.34 CU. YD.



RT. STA. 20+00  
 TREE REMOVAL (OVER 15 UNITS DIAMETER)  
 =22.4 UNITS

RT. STA. 21+00  
 TREE REMOVAL (OVER 15 UNITS DIAMETER)  
 =39.2 UNITS

**LEGEND**

	PAVEMENT REMOVAL
	PAVEMENT BREAKING
	HMA SURFACE REMOVAL-BUTT JOINT

MIN. DEPTH	UTILITY	COMPANY
4'-0"	PETROLEUM	BUCKEYE PARTNERS, L.P.
40"	OIL	BP AMOCO
2'-6"	TELEPHONE	FRONTIER COMMUNICATIONS
2'-0"	CABLE T.V.	MEDIACOM COMMUNICATIONS
3'-0"	ELECTRIC	AMEREN IP
2'-6"	NATURAL GAS	NICOR
4'-0"	WATER	DALLAS RURAL WATER DIST.

**PLAN NOTES**

- REMOVAL OF SAPLINGS, BUSHES AND ROOTS SHALL BE REMOVED AND DISPOSED OF AS REQUIRED BY ARTICLE 201
- SEE TREE REMOVAL TABLE FOR STATIONING AND QUANTITY
- REFER TO THE GENERAL NOTE AND/OR THE UNDERDRAIN, SPECIAL DETAIL IF ANY PIPE UNDERDRAINS OR FIELD TILE ARE ENCOUNTERED DURING CONSTRUCTION
- DUE TO THE POOR CONDITION OF THE EXISTING E.O.P ALONG BOTH SIDES OF IL ROUTE 116, QUANTITIES WERE INCLUDED FOR THE CONTRACTOR TO SAW CUT AND REMOVE PAVEMENT AT THE LOCATIONS AND WIDTHS SPECIFIED IN THE EXISTING TYPICALS. THIS WORK SHALL BE PAID FOR AS EITHER PAVEMENT REMOVAL AND/OR PAVEMENT REMOVAL, SPECIAL.

FILE NAME = sh01.dgn	USER NAME = russellm	DESIGNED -	REVISED -
		DRAWN -	REVISED -
		CHECKED -	REVISED -
		DATE -	REVISED -

STATE OF ILLINOIS  
 DEPARTMENT OF TRANSPORTATION

EXISTING UTILITY INFORMATION AND REMOVAL ITEMS

SCALE: 1"=50' SHEET NO. OF SHEETS STA. 15+00 TO STA. 28+00

F.A.P. RTE.	SECTION	COUNTY	TOTAL SHEETS	SHEET NO.
665	0136.137W&RS-3d136Rd1098R-2	HENDERSON		91
CONTRACT NO. 88773				

FED. ROAD DIST. NO. 4 ILLINOIS FED. AID PROJECT