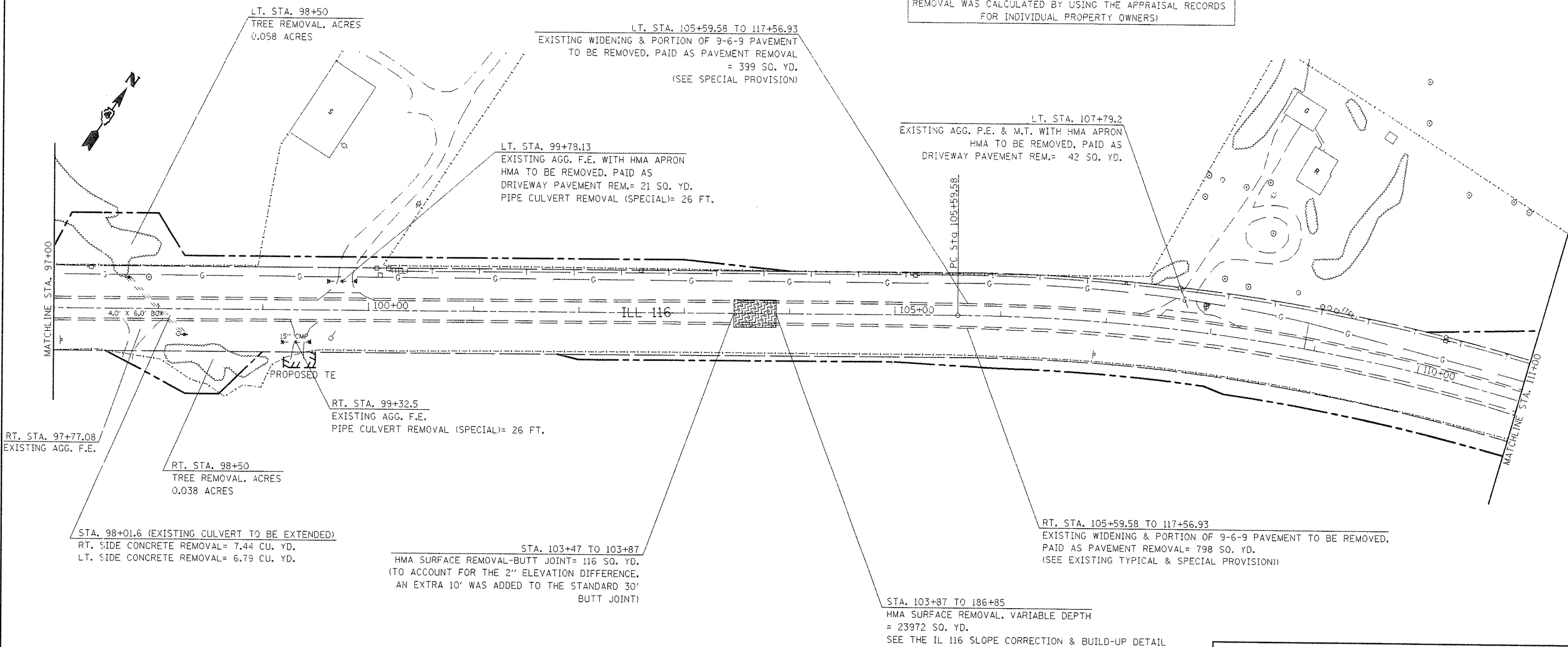


MEREDITH AND BONNIE FLATT

FENCE REMOVAL = 3,135 FEET
 (DUE TO THE SURVEY NOT BEING UP TO DATE, FENCE
 REMOVAL WAS CALCULATED BY USING THE APPRAISAL RECORDS
 FOR INDIVIDUAL PROPERTY OWNERS)



LT. STA. 98+50
 TREE REMOVAL, ACRES
 0.058 ACRES

LT. STA. 105+59.58 TO 117+56.93
 EXISTING WIDENING & PORTION OF 9-6-9 PAVEMENT
 TO BE REMOVED, PAID AS PAVEMENT REMOVAL
 = 399 SQ. YD.
 (SEE SPECIAL PROVISION)

LT. STA. 99+78.13
 EXISTING AGG. F.E. WITH HMA APRON
 HMA TO BE REMOVED, PAID AS
 DRIVEWAY PAVEMENT REM.= 21 SQ. YD.
 PIPE CULVERT REMOVAL (SPECIAL)= 26 FT.

LT. STA. 107+79.2
 EXISTING AGG. P.E. & M.T. WITH HMA APRON
 HMA TO BE REMOVED, PAID AS
 DRIVEWAY PAVEMENT REM.= 42 SQ. YD.

RT. STA. 97+77.08
 EXISTING AGG. F.E.

RT. STA. 98+50
 TREE REMOVAL, ACRES
 0.038 ACRES

RT. STA. 99+32.5
 EXISTING AGG. F.E.
 PIPE CULVERT REMOVAL (SPECIAL)= 26 FT.

STA. 98+01.6 (EXISTING CULVERT TO BE EXTENDED)
 RT. SIDE CONCRETE REMOVAL= 7.44 CU. YD.
 LT. SIDE CONCRETE REMOVAL= 6.79 CU. YD.

STA. 103+47 TO 103+87
 HMA SURFACE REMOVAL-BUTT JOINT= 116 SQ. YD.
 (TO ACCOUNT FOR THE 2" ELEVATION DIFFERENCE,
 AN EXTRA 10' WAS ADDED TO THE STANDARD 30'
 BUTT JOINT)

STA. 103+87 TO 186+85
 HMA SURFACE REMOVAL, VARIABLE DEPTH
 = 23972 SQ. YD.
 SEE THE IL 116 SLOPE CORRECTION & BUILD-UP DETAIL

RT. STA. 105+59.58 TO 117+56.93
 EXISTING WIDENING & PORTION OF 9-6-9 PAVEMENT TO BE REMOVED,
 PAID AS PAVEMENT REMOVAL= 798 SQ. YD.
 (SEE EXISTING TYPICAL & SPECIAL PROVISION)

LEGEND	
	PAVEMENT REMOVAL
	PAVEMENT BREAKING
	HMA SURFACE REMOVAL-BUTT JOINT

MIN. DEPTH	UTILITY	COMPANY
4'-0"	PETROLEUM	BUCKEYE PARTNERS, L.P.
4'-0"	OIL	BP AMOCO
2'-6"	TELEPHONE	FRONTIER COMMUNICATIONS
2'-0"	CABLE T.V.	MEDIACOM COMMUNICATIONS
3'-0"	ELECTRIC	AMEREN IP
2'-6"	NATURAL GAS	NICOR
4'-0"	WATER	DALLAS RURAL WATER DIST.

PLAN NOTES

- REMOVAL OF SAPLINGS, BUSHES AND ROOTS SHALL BE REMOVED AND DISPOSED OF AS REQUIRED BY ARTICLE 201
- SEE TREE REMOVAL TABLE FOR STATIONING AND QUANTITY
- REFER TO THE GENERAL NOTE AND/OR THE UNDERDRAIN, SPECIAL DETAIL IF ANY PIPE UNDERDRAINS OR FIELD TILE ARE ENCOUNTERED DURING CONSTRUCTION
- DUE TO THE POOR CONDITION OF THE EXISTING E.O.P ALONG BOTH SIDES OF IL ROUTE 116, QUANTITIES WERE INCLUDED FOR THE CONTRACTOR TO SAW CUT AND REMOVE PAVEMENT AT THE LOCATIONS AND WIDTHS SPECIFIED IN THE EXISTING TYPICALS. THIS WORK SHALL BE PAID FOR AS EITHER PAVEMENT REMOVAL AND/OR PAVEMENT REMOVAL, SPECIAL.

FILE NAME = sh01.dgn	USER NAME = russellem	DESIGNED -	REVISED -
		DRAWN -	REVISED -
		CHECKED -	REVISED -
		DATE -	REVISED -

STATE OF ILLINOIS
 DEPARTMENT OF TRANSPORTATION

EXISTING UTILITY INFORMATION AND REMOVAL ITEMS

SCALE: 1"=50' SHEET NO. OF SHEETS STA. 97+00 TO STA. 111+00

F.A.P. RTE.	SECTION	COUNTY	TOTAL SHEETS	SHEET NO.
665	(136.137)W&RS-3(136R)109BR-2	HENDERSON		97
FED. ROAD DIST. NO. 4 ILLINOIS FED. AID PROJECT				CONTRACT NO. 88773