

PROP. PIPE UNDERDRAIN 4"
SEE SPECIAL PROVISION

LT. & RT. STA. 217+00 TO STA. 217+39 LENGTH = 78 FT.
LT. & RT. STA. 217+39 TO STA. 219+06 LENGTH = 334 FT.
LT. & RT. STA. 219+06 TO STA. 220+05 LENGTH = 198 FT.
LT. & RT. STA. 220+05 TO STA. 222+00 LENGTH = 390 FT.

THESE UNDERDRAINS ARE TO TIE INTO EACH DRAINAGE STRUCTURE.

STA. 219+06.49
LT STA. PROP. INLET-MANHOLE TYP G-1 SP. 5' DIA
TOP OF GRATE ELEV. = 690.29
INVERT ELEV. = 686.10

RT STA. PROP. INLET TYP G-1 SPL
TOP OF GRATE ELEV. = 689.29
INVERT ELEV. = 686.23

PROP. STORM SEWER TYP 1, CLASS A 18"
LENGTH = 26.4'
USFL = 686.44
DSFL = 686.31

STA. 220+04.98
LT STA. PROP. INLET TYP G-1 SPL.
TOP OF GRATE ELEV. = 691.39
INVERT ELEV. = 688.26

RT STA. PROP. INLET TYP G-1 SPL
TOP OF GRATE ELEV. = 691.23
INVERT ELEV. = 687.60

PROP. STORM SEWER TYP 1, CLASS A 18"
LENGTH = 27.0'
USFL = 688.47
DSFL = 688.30

STA. 222+50
LT. STA. INLET TYP G-1 SPL.
TOP OF GRATE ELEV. = 699.51
INVERT ELEV. = 695.67

RT STA. INLET TYP G-1 SPL.
TOP OF GRATE ELEV. = 699.51
INVERT ELEV. = 695.87

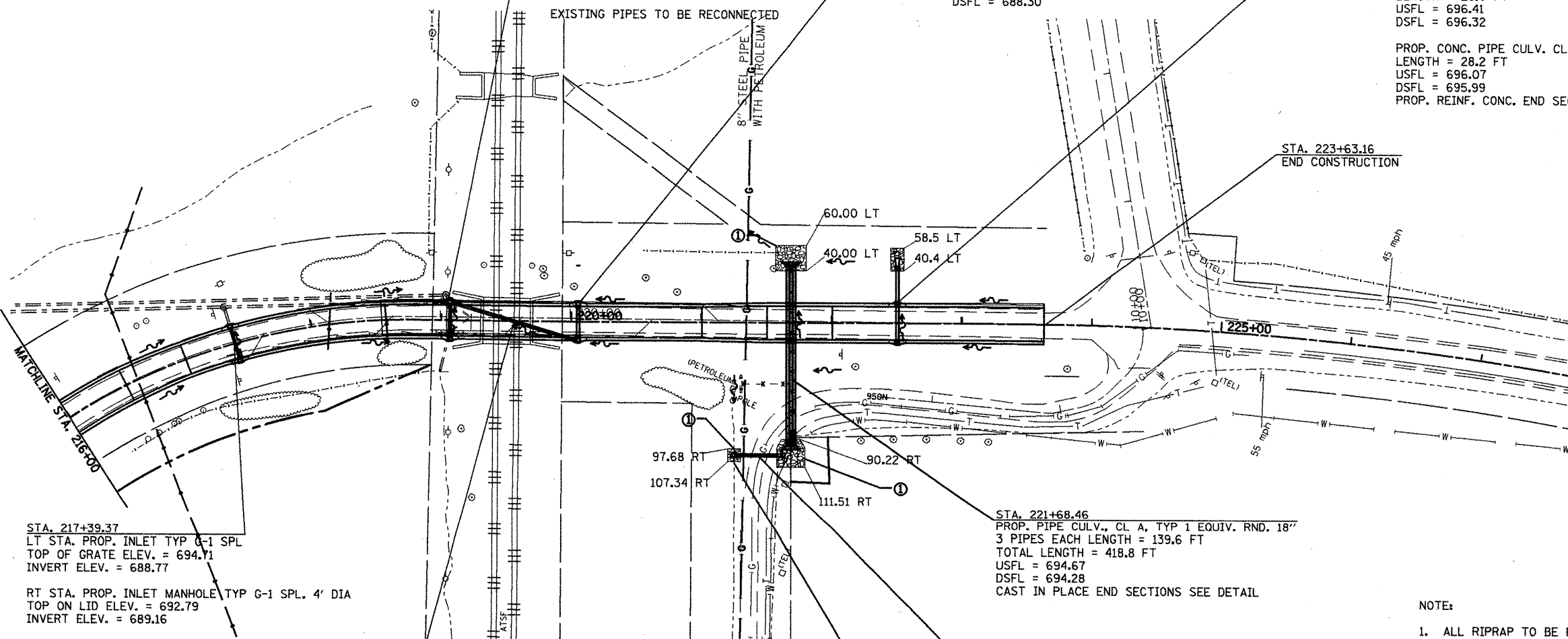
PROP. CONC. PIPE CULV. CL A, TYP 1, 18"
LENGTH = 29.0 FT
USFL = 696.41
DSFL = 696.32

PROP. CONC. PIPE CULV. CL A, TYP 1, 18"
LENGTH = 28.2 FT
USFL = 696.07
DSFL = 695.99
PROP. REINF. CONC. END SECT 18" = 1 EACH

EXISTING PIPES TO BE RECONNECTED

8" STEEL PIPE WITH PETROLEUM

STA. 223+63.16
END CONSTRUCTION



STA. 217+39.37
LT STA. PROP. INLET TYP G-1 SPL
TOP OF GRATE ELEV. = 694.71
INVERT ELEV. = 688.77

RT STA. PROP. INLET MANHOLE TYP G-1 SPL. 4' DIA
TOP ON LID ELEV. = 692.79
INVERT ELEV. = 689.16

PROP. STORM SEWER TYP 1, CLASS A 18"
LENGTH = 27.0'
USFL = 689.37
DSFL = 689.24

EXISTING PIPES TO BE RECONNECTED

STA. 219+07.99 LT 14.0' TO STA. 220+04.00 RT 14.2'
PROP. STORM SEWER TYP 1, CLASS A 18"
LENGTH = 100.1 FT
USFL = 687.81
DSFL = 686.81

STA. 221+68.46
PROP. PIPE CULV., CL A, TYP 1 EQUIV. RND. 18"
3 PIPES EACH LENGTH = 139.6 FT
TOTAL LENGTH = 418.8 FT
USFL = 694.67
DSFL = 694.28
CAST IN PLACE END SECTIONS SEE DETAIL

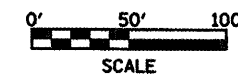
RT STA. 221+25.61 TO 221+57.53
PROP. CONC. PIPE CULV. 18"
OFFSET = 102.51
LENGTH = 31.9 FT
USFL = 695.49
DSFL = 694.83
PRECAST REINF. CONC. END SECT 18" = 1 EACH

RT STA. 221+24.61 OFFSET = 102.51' RT
PROP. CONC. DROP BOX #6 SEE DETAIL

NOTE:

1. ALL RIPRAP TO BE PLACED WITHIN THE DITCH SHALL COVER THE 2 FT DITCH BOTTOM AND 2 FT UP THE FORESLOPE AND BACKSLOPE
2. FOR DETAIL ON RIPRAP QUANTITIES SEE CALC SHEETS
3. SEE SCHEDULE FOR ENTRANCE CULVERT INFO

	STONE RIPRAP
	CLASS B3
	CLASS A5
	CLASS B5
	FABRIC FORMED CONC. REV. MAT



FILE NAME = draindetail.dgn	USER NAME = ghidraem	DESIGNED -	REVISED -	STATE OF ILLINOIS DEPARTMENT OF TRANSPORTATION	PROPOSED DRAINAGE IL 116 STA. 216+00 TO STA. 223+63.16	F.A.P. RTE. 665	SECTION (136J37)W&RS-3136R109BR-1	COUNTY HENDERSON	TOTAL SHEETS 124	SHEET NO. 124	
	PLOT SCALE = 100.0000' / IN.	DRAWN -	REVISED -			SCALE:	SHEET NO. OF SHEETS	STA. TO STA.	CONTRACT NO. 88773		
	PLOT DATE = 2/27/2009	CHECKED -	REVISED -						FED. ROAD DIST. NO. ILLINOIS FED. AID PROJECT		
		DATE -	REVISED -								