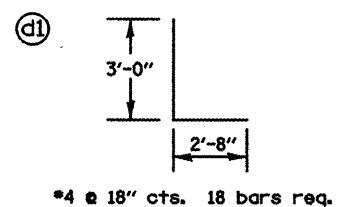
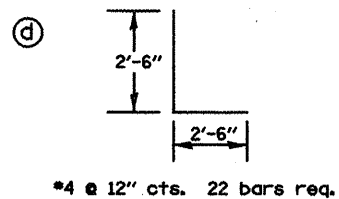
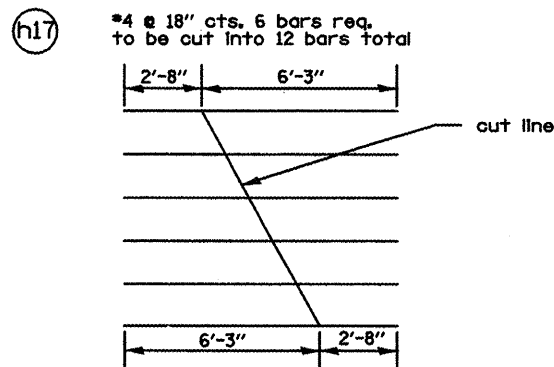
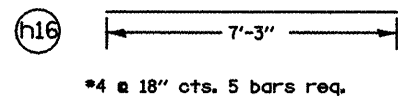
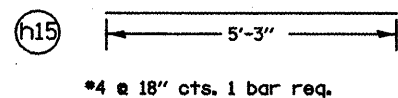


Bar	Length
h10	12'-6"
h11	16'-5"
h12	20'-4"
h13	24'-2"
h14	27'-4"

h10-h13: 1 bar of each length is req.
h14: 3 bars of stated length req.

lengths given in this chart do not include extra length for lapping bars.



BILL OF MATERIAL					
BAR	SIZE	LENGTH	NORTH SIDE NO.	SOUTH SIDE NO.	SHAPE
a	6	8'-0"	18	18	U
a1	6	7'-10"	2	2	U
a2	6	7'-0"	2	2	U
a3	6	6'-3	2	2	U
a4	6	5'-5"	2	2	U
a5	6	4'-8"	2	2	U
a6	6	3'-10"	2	2	U
a7	6	3'-1"	2	2	U
x	4	5'-4"	35	35	U
x1	4	8'-2"	12	12	U
x2	4	7'-6"	12	12	U
x3	4	4'-2"	12	12	U
x4	4	12'-8"	2	2	U
x4a	4	21'-2"	2	2	U
x5	4	13'-6"	2	2	U
x5a	4	21'-4"	2	2	U
v	4	7'-0"	25	25	U
v1*	4	9'-10"	7	7	U
v2*	4	9'-11"	15	15	U
h*	5	17'-2"	6	6	U
h1	5	6'-3"	1	1	U
h2	5	11'-0"	1	1	U
h3*	4	16'-11"	5	5	U
h4	4	6'-3"	1	1	U
h5	4	11'-0"	1	1	U
h6	5	6'-2"	13	13	U
h7	5	11'-9"	13	13	U
h8	4	6'-9"	6	6	U
h9	4	14'-10"	6	6	U
h10	4	12'-6"	1	1	U
h11	4	16'-5"	1	1	U
h12	4	20'-4"	1	1	U
h13	4	24'-2"	1	1	U
h14	4	27'-4"	3	3	U
h15	4	5'-3'	1	1	U
h16	4	7'-3"	5	5	U
h17*	4	8'-11"	6	6	U
d	4	5'-0"	22	22	L
d1	4	5'-8"	18	18	L
CONC. BOX CULV. YD ³			17.6	17.6	
REINFORCEMENT BARS			LBS		3255
CONC. BOX CULV. YD ³					35.2

*Refer to cut diagram for total amount of rebar required.

DRAWING NOT TO SCALE