

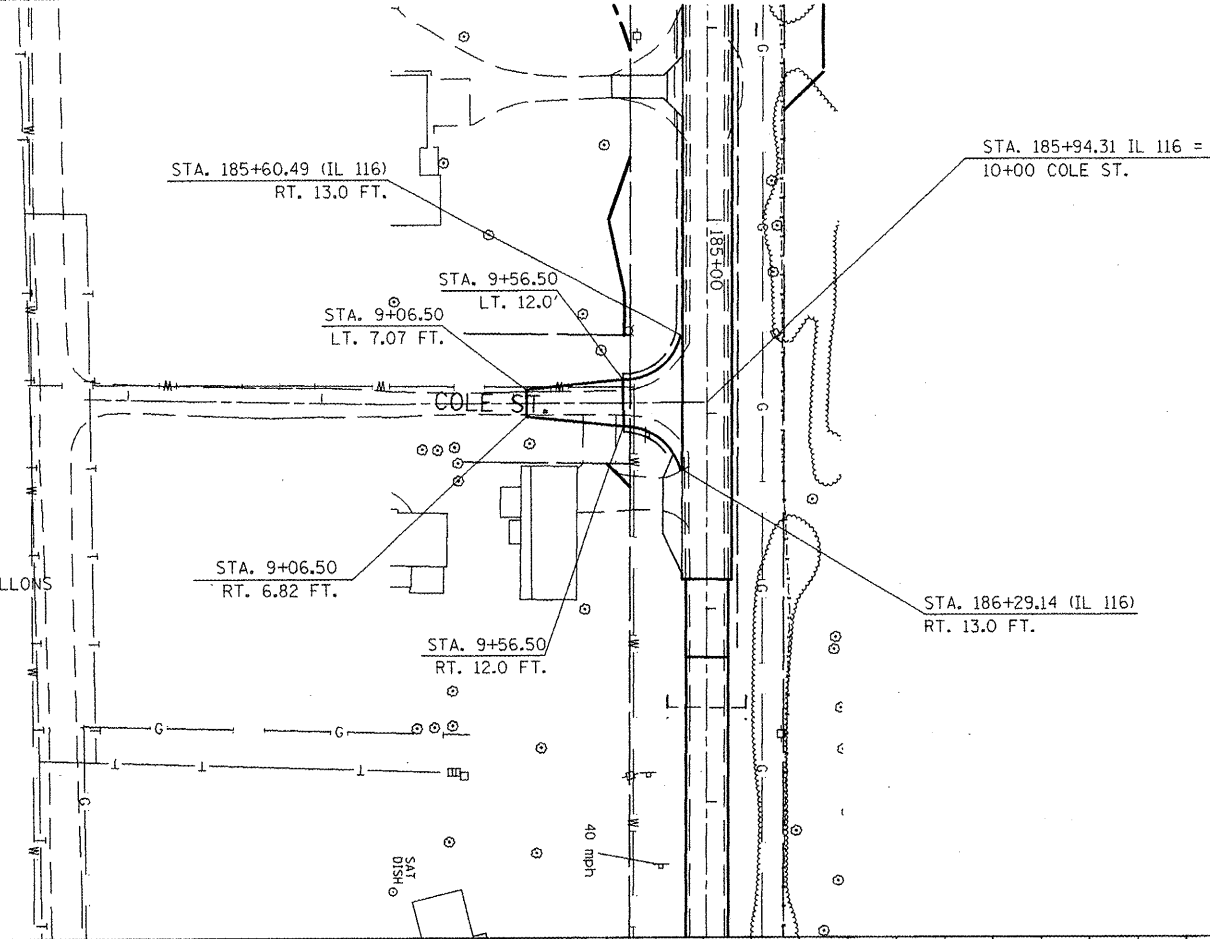
PLAN	SURVEYED	DATE
	PLOTTED	
	CHECKED	
	BY	
	NO. OF WAY CHECKED	
	NO.	
	ADD FILE NAME	

RADIUS RETURN  
HMA BASE COURSE, 6" = 41.6 TONS  
INCIDENTAL HMA SURF., 2" = 13.9 TONS  
SUB-BASE GRAN. MAT'L, TYP A, 6" = 137 SO. YD.

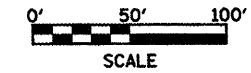
LT. STA. 9+06.50 TO LT. STA. 9+56.50  
HMA BASE COURSE WIDENING, 9" = 19.1 SO. YD.

RT. STA. 9+06.50 TO RT. STA. 9+56.50  
HMA BASE COURSE WIDENING, 9" = 18.7 SO. YD.

STA. 9+06.50 TO STA. 9+56.50  
BITUMINOUS SURFACE TREATMENT CLASS A-1  
BITUMINOUS MATERIALS (COVER & SEAL COATS) = 5.3 GALLONS  
(SEE ARTICLE 403.02 FOR MATERIAL TYPES)  
SEAL COAT AGGREGATE = 1.3 TONS  
(USE GRADATION CA 16)

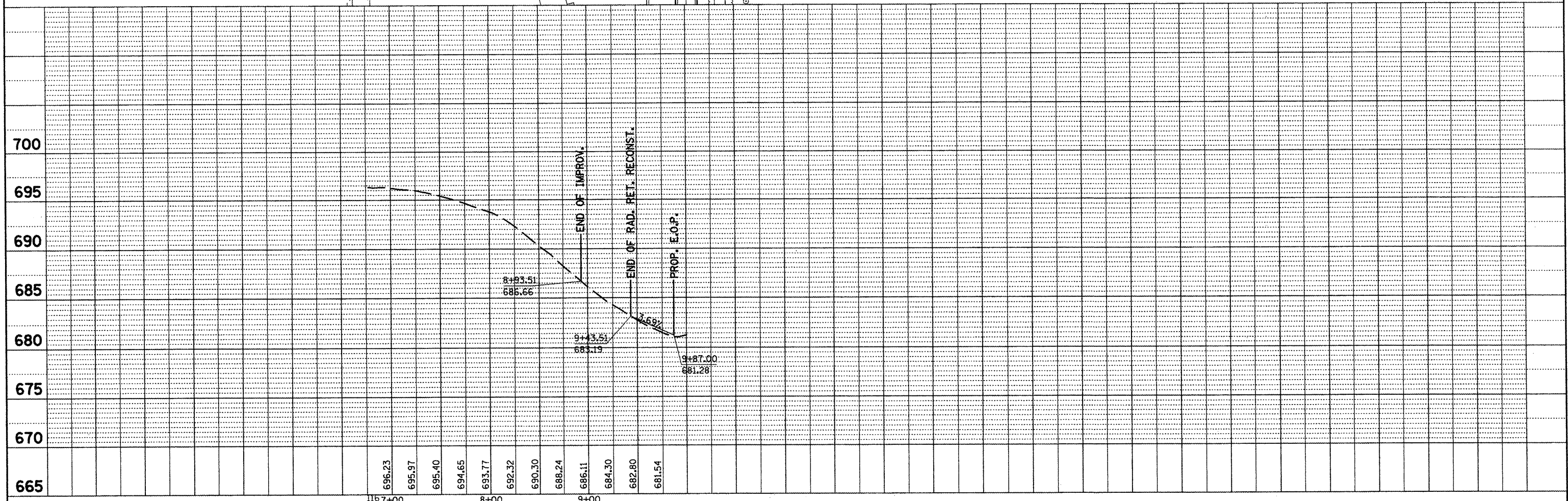


NOTE  
THE EDGE OF EXISTING PAVEMENT SHALL BE  
CLEANED TO THE SATISFACTION OF THE  
ENGINEER BEFORE PLACEMENT OF THE WIDENING.



ALL RADII MEASURE 30 FT.

PROFILE	SURVEYED	DATE
	PLOTTED	
	CHECKED	
	BY	
	NO. OF WAY CHECKED	
	NO.	
	ADD FILE NAME	



FILE NAME = siderdsh.dgn	USER NAME = ghidnaem	DESIGNED SRR14	REVISED -	<b>STATE OF ILLINOIS</b> <b>DEPARTMENT OF TRANSPORTATION</b>	<b>COLE ST. PLAN &amp; PROFILE</b>	F.A.P. RTE. 665	SECTION 036.137/WARS-3A36R109BR-2	COUNTY HENDERSON	TOTAL SHEETS 185	SHEET NO. 185		
PLOT SCALE = 100.0000 / IN.	CHECKED 50	DRAWN 665	REVISED -			SCALE:	SHEET NO. OF SHEETS STA. TO STA.	ILLINOIS FED. AID PROJECT				
PLOT DATE = 2/17/2009	DATE 5	DATE 5	REVISED -			CONTRACT NO. 88773						
NOGAP												