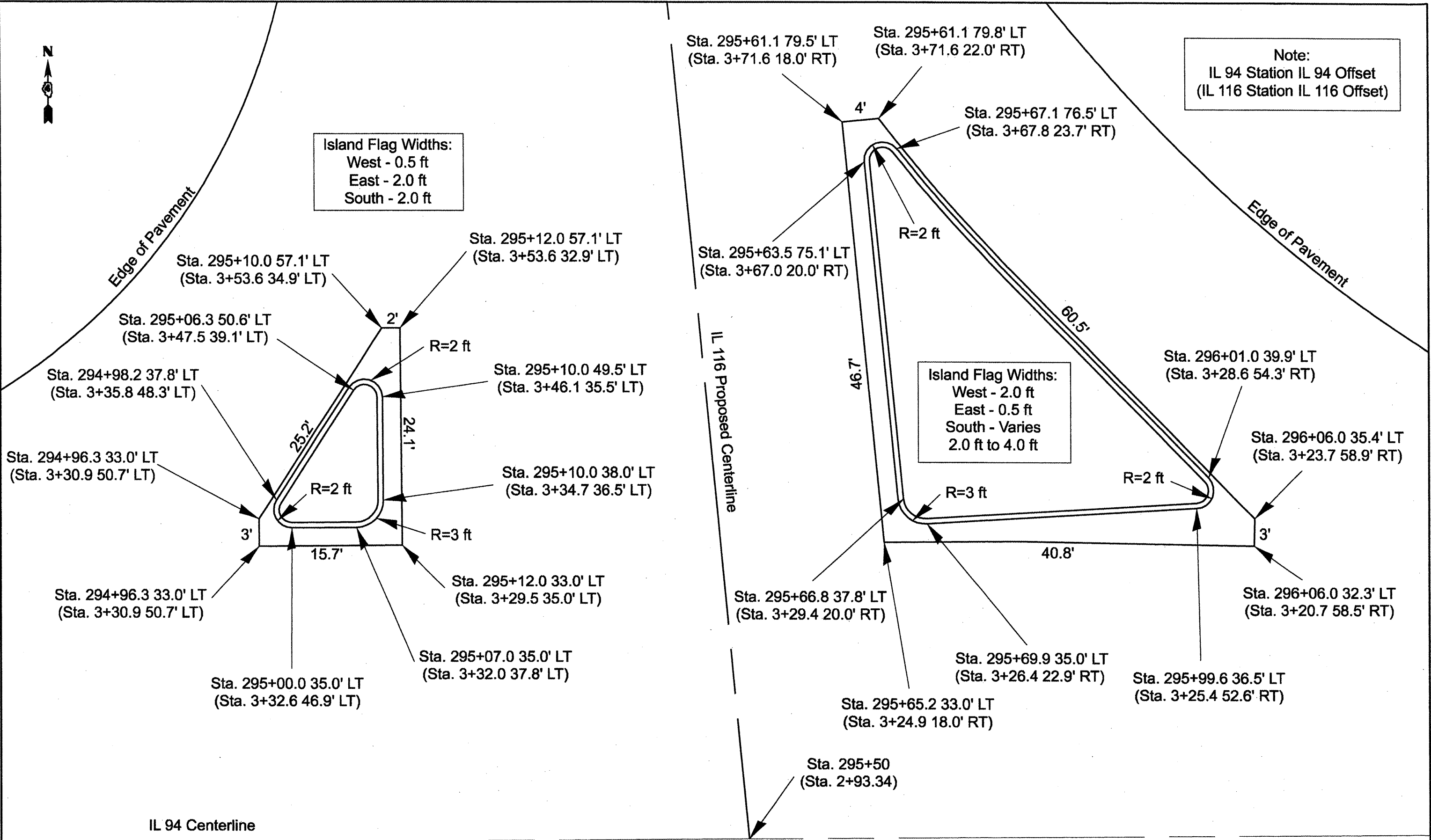




Note:
IL 94 Station IL 94 Offset
(IL 116 Station IL 116 Offset)

Island Flag Widths:
West - 0.5 ft
East - 2.0 ft
South - 2.0 ft

Island Flag Widths:
West - 2.0 ft
East - 0.5 ft
South - Varies
2.0 ft to 4.0 ft



FILE NAME = staging.dgn	USER NAME = hudeisonm	DESIGNED -	REVISED -
		DRAWN -	REVISED -
		CHECKED -	REVISED -
		DATE -	REVISED -

**STATE OF ILLINOIS
DEPARTMENT OF TRANSPORTATION**

**PROPOSED ISLANDS DETAIL
IL 94 / IL 116 INTERSECTION**

F.A.P. RTE. 665	SECTION *	COUNTY HENDERSON	TOTAL SHEETS 187	SHEET NO. 187
CONTRACT NO. 88775			ILLINOIS FED. AID PROJECT	