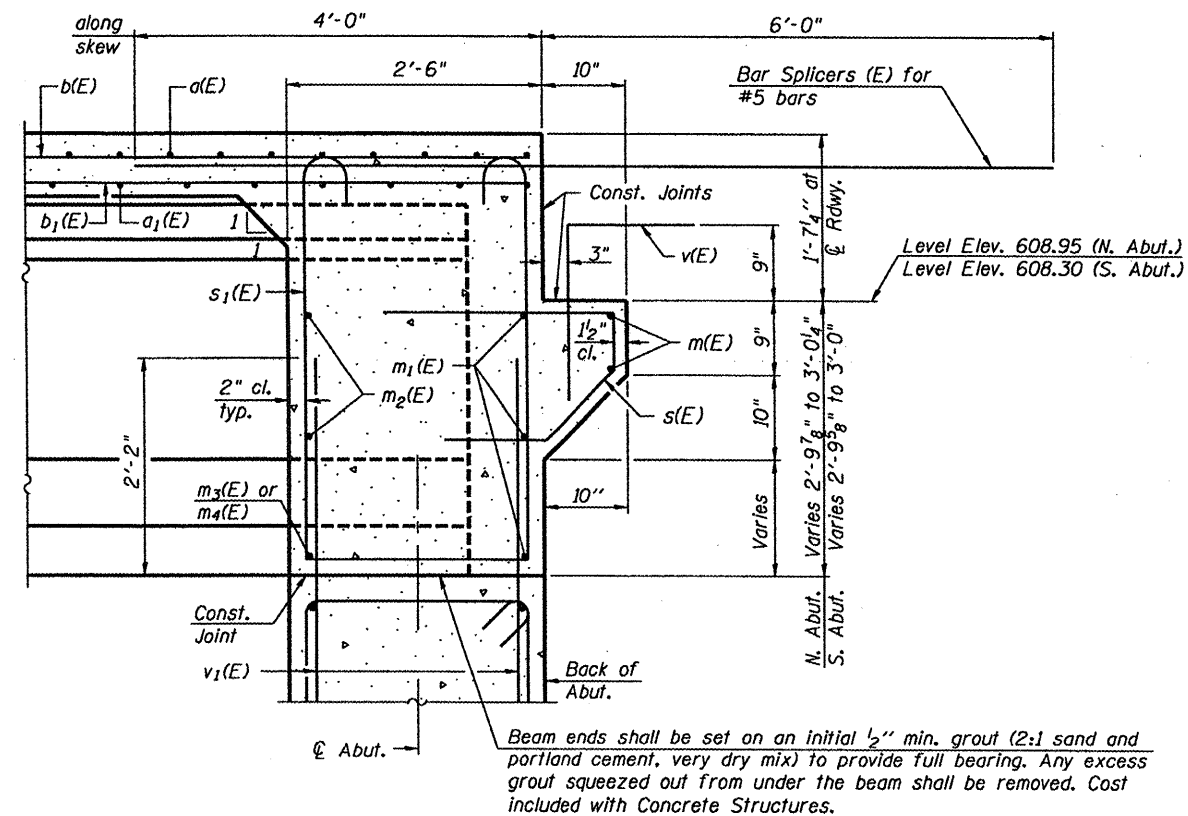


DIAPHRAGM ELEVATION AT ABUTMENT

MIN. BAR LAP
#6 bar = 2'-9"



SECTION A-A

Dimensions at right angles to abutment, except as shown.

Notes:
Reinforcement bars in diaphragm are billed with superstructure on sheet 7 of 17.
Concrete in diaphragm is included with Concrete Superstructure on sheet 7 of 17.
For details of bars s(E) and s₁(E) see sheet 7 of 17.
The s(E) and s₁(E) bars shall be placed parallel to the beams.
Spacing for these bars shall be at right angles to the beams.

Beam ends shall be set on an initial 1/2" min. grout (2:1 sand and portland cement, very dry mix) to provide full bearing. Any excess grout squeezed out from under the beam shall be removed. Cost included with Concrete Structures.

DESIGNED MJJ
CHECKED ALN
DRAWN MJJ
CHECKED ALN

THOUVENOT, WADE & MOERCHEN, INC.
SWANSEA • WATERLOO • EDWARDSVILLE • CARBONDALE • ST. CHARLES

COBBOBATE OFFICE
4940 Old Collinsville Road
Swansea, Illinois 62226
Tel: 618.624.4488
Fax: 618.624.6688



SHEET NO. 8
SHEETS 17

F.A.P. RTE.	SECTION	COUNTY	TOTAL SHEETS	SHEET NO.
534	109BR-2	HENDERSON	490	435
CONTRACT NO. 88773				
FED. ROAD DIST. NO. 7 ILLINOIS FED. AID PROJECT				

DIAPHRAGM DETAILS
STRUCTURE NO. 036-0069

Printed by: jstein 1/21/2009 10:01:53 AM