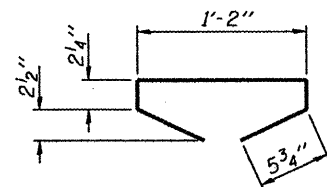
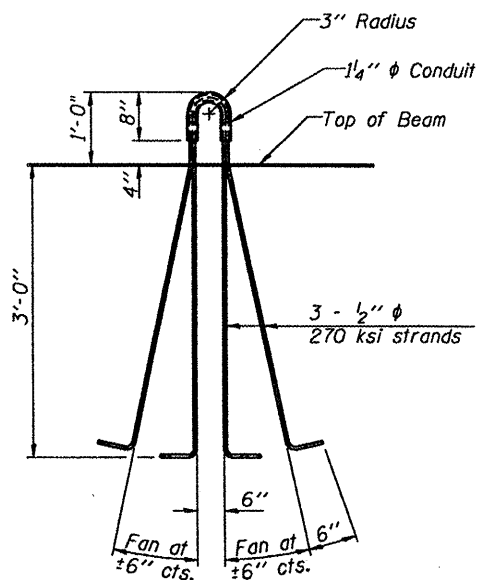


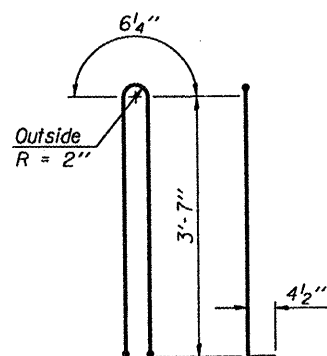
BAR G4



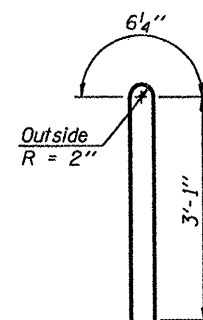
BAR G5



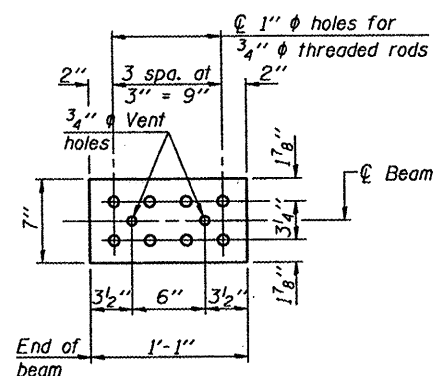
LIFTING LOOP DETAIL



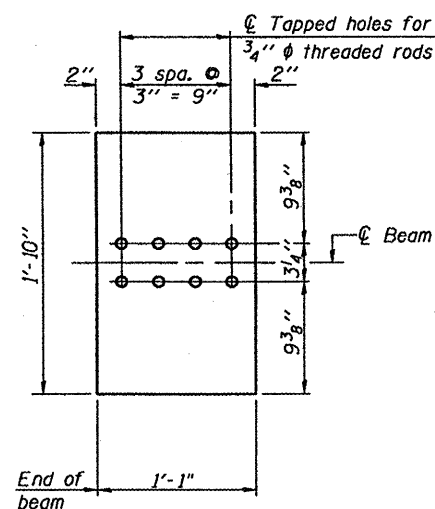
BAR G1



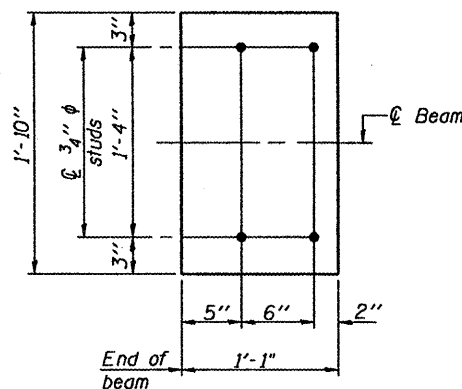
BAR G2



TOP PLATE



BOTTOM PLATE
(Showing threaded rods)



BOTTOM PLATE
(Showing studs)

See bearing details for pintle hole locations when required.

NOTES

Inserts for 3/4" ϕ threaded dowel rods, when specified, are to be two strut, ferrule type for interior beams and single ferrule, flared loop type for exterior beams. Prestressing steel shall be uncoated high strength, low relaxation 7-wire strand, Grade 270. The nominal diameter shall be 1/2" and the nominal cross-sectional area shall be 0.153 sq. in. Reinforcement bars shall conform to ASTM A 706, Grade 60. (See Special Provisions). A minimum 2 1/2" ϕ lifting pin shall be used to engage the lifting loops during handling. The top and bottom plates shall be AASHTO M270 Grade 50. The bottom plates and studs shall be galvanized according to AASHTO M111. Threaded rods shall be ASTM F 1554 Grade 55.

BILL OF MATERIAL

Item	Unit	Total
Furnishing and Erecting Precast Prestressed Concrete I-Beams, 42"	Ft.	462

DESIGNED	ASW
CHECKED	ALN
DRAWN	ASW
CHECKED	ALN

THOUVENOT, WADE & MOERCHEN, INC.
 SWANSEA • WATERLOO • EDWARDSVILLE • CARBONDALE • ST. CHARLES
 COBROBATE OFFICE
 4940 Old Collinsville Road
 Swansea, Illinois 62226
 Tel: 618.624.4488
 Fax: 618.624.6688



SHEET NO. 11
 SHEETS 17

F.A.P. RTE.	SECTION	COUNTY	TOTAL SHEETS	SHEET NO.
534	109BR-2	HENDERSON	490	438
FED. ROAD DIST. NO. 7 ILLINOIS			CONTRACT NO. 88773	
FED. AID PROJECT				

42" PPC I-BEAM DETAILS
 STRUCTURE NO. 036-0069