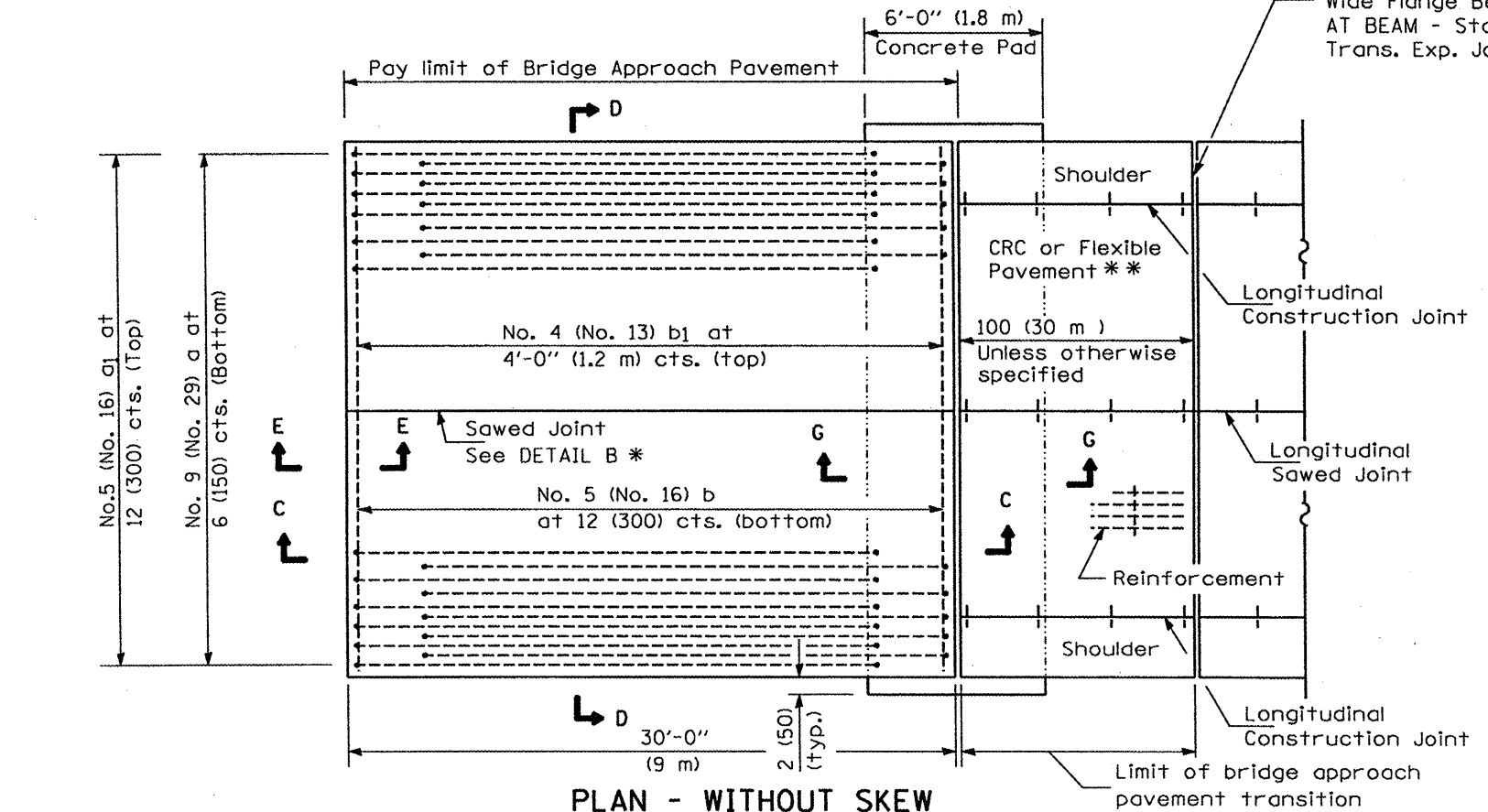
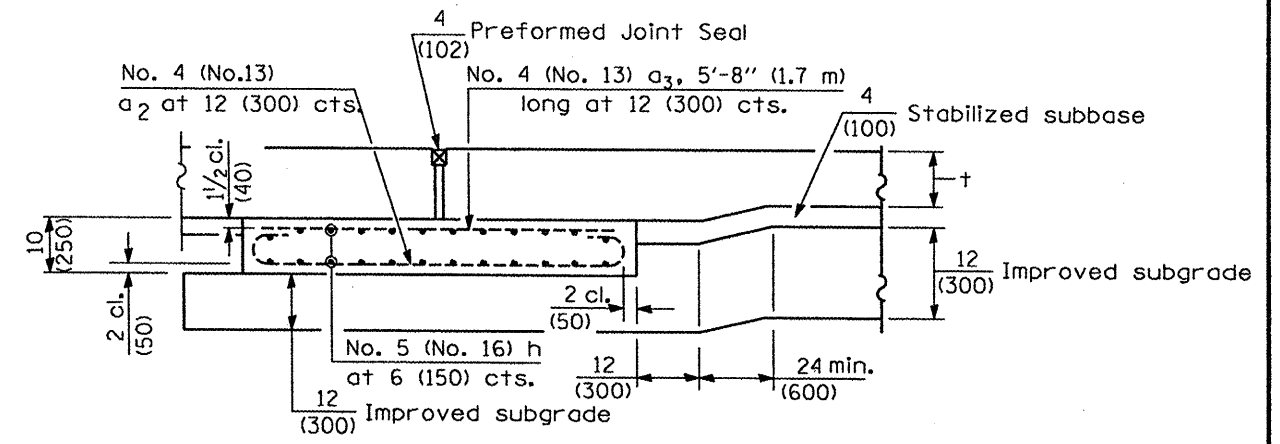
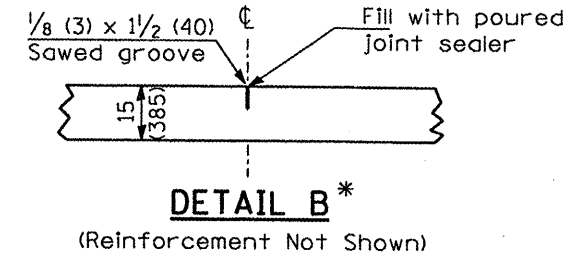


PLAN - WITH SKEW



PLAN - WITHOUT SKEW

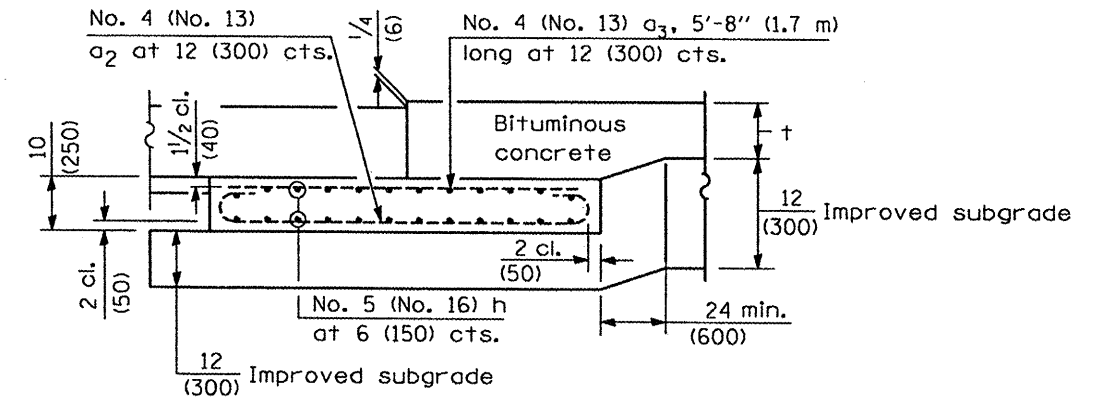
NEW CONSTRUCTION



SECTION G-G - RIGID PAVEMENT

(Showing reinforcement)

Rigid Pavement only:
Wide Flange Beam Terminal Joint (See DETAIL AT BEAM - Standard 421101 or 421106) or 2 (50) Trans. Exp. Joint as detailed on Standard 420001.



SECTION G-G - FLEXIBLE PAVEMENT

(Showing reinforcement)

GENERAL NOTES

THICKNESS-'t' = Thickness of Pavement.
See Standard 421001 for reinforcement details not shown.
See Standard 420001 for joint details not shown.
All dimensions are in inches (millimeters) unless otherwise shown.

* Saw \perp or lane edge if poured two or more lane widths at a time.
** Omit Reinforcement, tie bars and Long. sawed Jt. for Flexible Pavement.

FILE NAME =	USER NAME = jstein	DESIGNED - JWS	REVISED -	STATE OF ILLINOIS DEPARTMENT OF TRANSPORTATION	BRIDGE APPROACH PAVEMENT DETAILS	F.A.P. RTE.	SECTION	COUNTY	TOTAL SHEETS	SHEET NO.	
P:\050301\dgn\CADD SHEETS\0488773-shd-29-032-details-approach1.dgn	DRAWN - JWS	CHECKED - SJK	REVISED -			534	1136.137/W&RS-3;136R;109BR-2	HENDERSON	490	445	
PLOT SCALE = 1/8" = 1' / IN.	DATE - 1/21/2009	REVISI	REVISI			CONTRACT NO. 88773					
PLOT DATE = 1/21/2009	DATE - 1/21/2009	REVISI	REVISI			FED. ROAD DIST. NO. 7 ILLINOIS FED. AID PROJECT					
SCALE: 1" = 50'						SHEET NO. 1 OF 4 SHEETS		STA. TO STA.		FED. ROAD DIST. NO. 7 ILLINOIS FED. AID PROJECT	