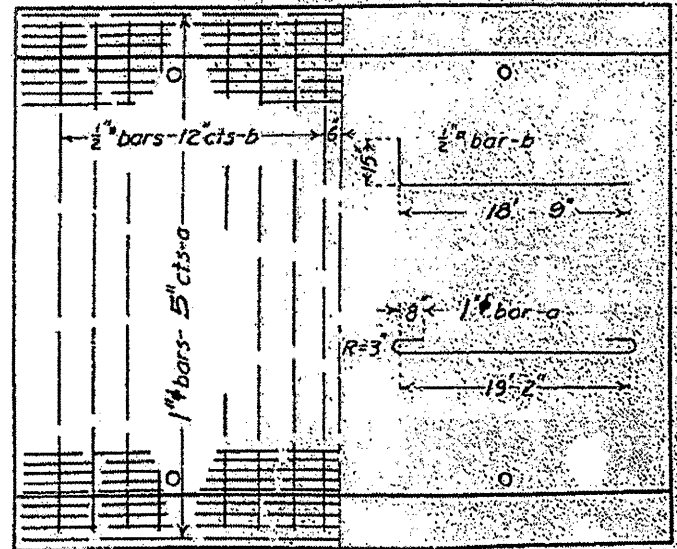
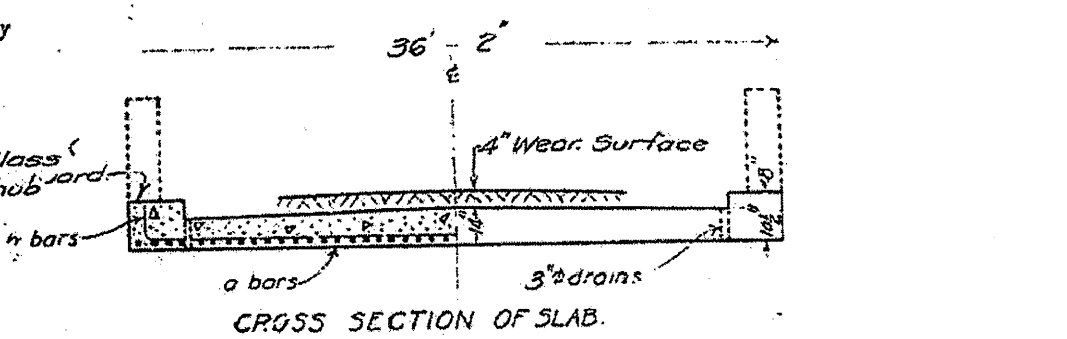
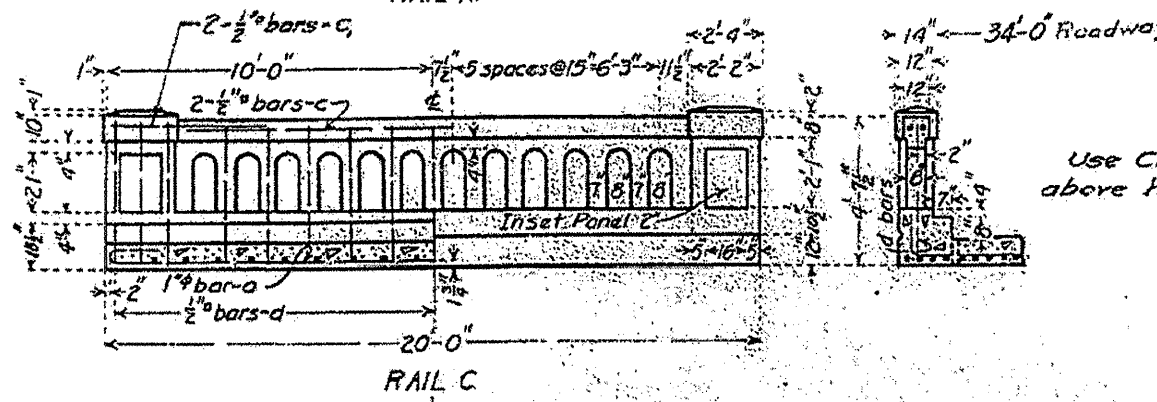
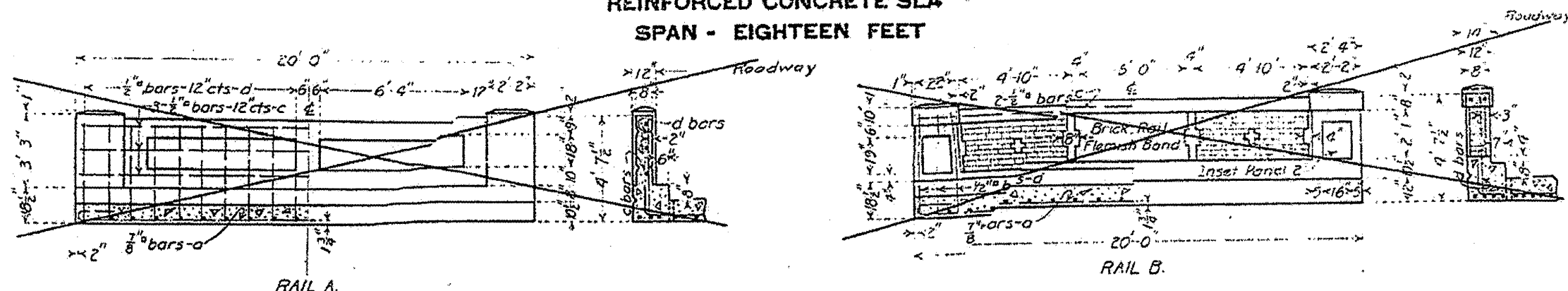


STATE OF ILLINOIS
DEPARTMENT OF PUBLIC WORKS & BUILDINGS
DIVISION OF HIGHWAYS

BOND ISSUE ROUTE NO.	COUNTY	SEC.	TOTAL SHEETS	SHEET NO.
97A	Henderson	135	31	28

Sheet No. 28 of 31

REINFORCED CONCRETE SLAB
SPAN - EIGHTEEN FEET



BILL OF MATERIAL

	16 FT. ROADWAY	18 FT. ROADWAY	20 FT. ROADWAY	24 FT. ROADWAY	34 FT. ROADWAY
RAIL A	a 45 1/8" 22'-0"	a 50 1/8" 22'-0"	a 55 1/8" 22'-0"	a 65 1/8" 22'-0"	a 81 1/8" 22'-0"
	b 18 1/2" 19'-6"	b 18 1/2" 21'-6"	b 18 1/2" 23'-6"	b 36 1/2" 15'-0"	b 36 1/2" 18'-0"
	c 6 1/2" 19'-6"	c 6 1/2" 19'-6"	c 6 1/2" 19'-6"	c 6 1/2" 19'-6"	c 6 1/2" 19'-6"
	d 40 1/2" 4'-3"	d 40 1/2" 4'-3"	d 40 1/2" 4'-3"	d 40 1/2" 4'-3"	d 40 1/2" 4'-3"
Steel-Lbs.	3120	3440	3750	4420	6430
Concrete-Cu.Yds.	1.7	1.9	2.0	2.3	2.9
RAIL B	a 45 1/8" 22'-0"	a 50 1/8" 22'-0"	a 55 1/8" 22'-0"	a 65 1/8" 22'-0"	a 81 1/8" 22'-0"
	b 18 1/2" 19'-6"	b 18 1/2" 21'-6"	b 18 1/2" 23'-6"	b 36 1/2" 15'-0"	b 36 1/2" 18'-0"
	c 9 1/2" 19'-6"	c 9 1/2" 19'-6"	c 9 1/2" 19'-6"	c 9 1/2" 19'-6"	c 9 1/2" 19'-6"
	d 12 1/2" 4'-3"	d 12 1/2" 4'-3"	d 12 1/2" 4'-3"	d 12 1/2" 4'-3"	d 12 1/2" 4'-3"
Steel-Lbs.	2980	3300	3620	4290	5308
Concrete-Cu.Yds.	1.6	1.8	1.9	2.2	2.6
Brick Rail-Cu.Yds.	1.4	1.4	1.4	1.4	1.4
RAIL C	a 45 1/8" 22'-0"	a 50 1/8" 22'-0"	a 55 1/8" 22'-0"	a 65 1/8" 22'-0"	a 81 1/8" 22'-0"
	b 18 1/2" 19'-6"	b 18 1/2" 21'-6"	b 18 1/2" 23'-6"	b 36 1/2" 15'-0"	b 36 1/2" 18'-0"
	c 9 1/2" 19'-6"	c 9 1/2" 19'-6"	c 9 1/2" 19'-6"	c 9 1/2" 19'-6"	c 9 1/2" 19'-6"
	d 34 1/2" 4'-3"	d 34 1/2" 4'-3"	d 34 1/2" 4'-3"	d 34 1/2" 4'-3"	d 34 1/2" 4'-3"
Steel-Lbs.	3060	3380	3700	4370	5930
Concrete-Cu.Yds.	1.4	1.8	2.0	2.3	2.8
Conc. X-Cu.Yds.					3.2

Class A concrete to be used below top of hubguard Proportions 1-2-3

Class X Concrete to be used above top of hubguard Proportions 1-2-3 1/2

USE RAIL C, 34 FT ROADWAY.

COMPUTED	Walter S. Todd
CHECKED	J. H. Buchanan
DRAWN	H. B. Delaney
CHECKED	at V. K. Lind
ASSEMBLED	J. B. Kirkwood
CHECKED	F. R. Anderson

DESIGNED - W. S. Todd
DRAWN - H. B. Delaney
CHECKED - J. H. Buchanan
ASSEMBLED - J. B. Kirkwood
APPROVED - F. R. Anderson
SUPERVISOR OF DESIGN
CHIEF HIGHWAY ENGINEER

S.B.I. ROUTE 97A SEC. 135
HENDERSON COUNTY
STATION 413 + 70