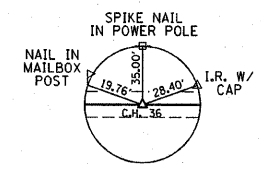
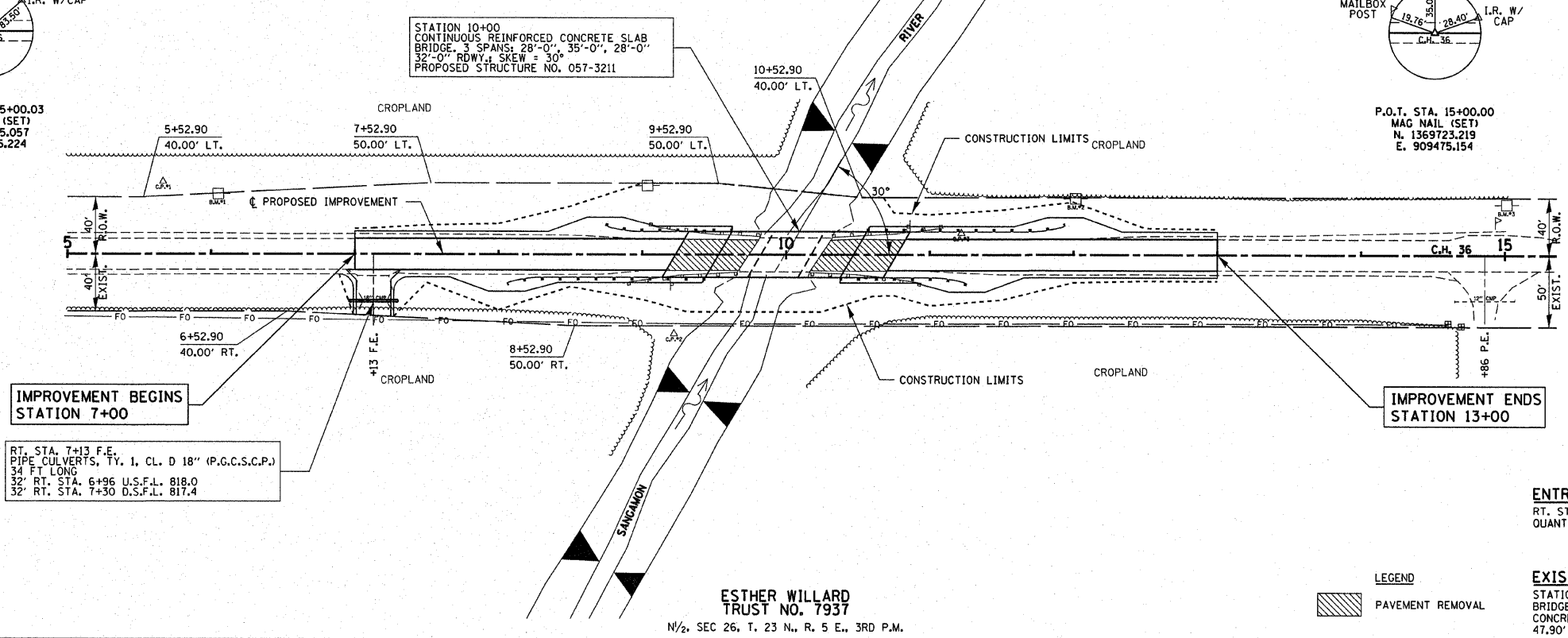
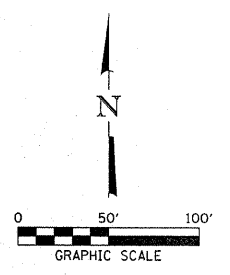


P.O.T. STA. 5+00.03
P.K. NAIL (SET)
N. 1369735.057
E. 908475.224

MARGARET L. LAZARETTE, TR.
SE 1/4, SW 1/4, SEC 23, T. 23 N., R. 5 E., 3RD P.M.



P.O.T. STA. 15+00.00
MAG NAIL (SET)
N. 1369723.219
E. 909475.154



IMPROVEMENT BEGINS
STATION 7+00

RT. STA. 7+13 F.E.
PIPE CULVERTS, TY. 1, CL. D 18" (P.C.C.S.C.P.)
34' FT LONG
32' RT. STA. 6+96 U.S.F.L. 818.0
32' RT. STA. 7+30 D.S.F.L. 817.4

IMPROVEMENT ENDS
STATION 13+00

ENTRANCES TO BE BUILT
RT. STA. 7+13 F.E. -5.6% AGG. 24' SURF.
QUANTITIES INCLUDED IN EARTHWORK TABLE.

EXISTING STRUCTURE NO. 057-3204
STATION 10+00 - TWO SPAN CAST IN PLACE CONC.
BRIDGE WITH CONCRETE PARAPETS ON CLOSED
CONCRETE ABUTMENTS AND WINGWALLS.
47.90' FC-FC, ABUTS; 32.72' O.-O, DECK

LEGEND
PAVEMENT REMOVAL

DATE	
BY	
REVIEWED	
PLANNED	
ALIGNED	
CHECKED	
NO. _____	
NOTE BOOK	
NO. _____	
FILE NAME	
NO. _____	

DATE	
BY	
REVIEWED	
GRADES	
CHECKED	
NO. _____	
STRUCTURE	
NOTATIONS	
CHRD	

840	BM#1 - SPIKE NAIL IN S. FACE OF POWER POLE 42' LT., STA. 6+05 ELEV. 821.41	BM#2 - SPIKE NAIL IN S. FACE OF POWER POLE 39' LT., STA. 12+01 ELEV. 819.58	P.I. STA. 9+23.05 ELEV. 822.00	P.I. STA. 10+76.95 ELEV. 822.00	BM#3 - SPIKE NAIL IN S. FACE OF POWER POLE 35' LT., STA. 15+01 ELEV. 823.02	840
835			NO CURVE	NO CURVE		835
830			EARTH EXCAVATION = 75 CU YD FURNISHED EXCAVATION = 160 CU YD			830
825			100 YEAR H.W. ELEV. 818.5 20 YEAR H.W. ELEV. 817.0			825
820			PROP. PAVEMENT TRANSITION +0.31% +0.00% -0.31% TRANSITION			820
815			EXISTING C. GRADE			815
810			RIPRAP, SPECIAL 814.00 LT. SP. DITCH LT. 812.00 LT.	CHANNEL EXCAVATION 2:1 @ RT. L'S		810
805			ELEV. 806.7			805
800						800

FILE NAME =	USER NAME =	DESIGNED - J.W.F.	REVISED -	<p>STATE OF ILLINOIS McLEAN COUNTY HIGHWAY DEPARTMENT</p> <p>HAMPTON, LENZINI & RENWICK, INC. CIVIL & STRUCTURAL ENGINEERS LAND SURVEYORS</p> <p>PLAN & PROFILE</p>	C.H.	SECTION	COUNTY	TOTAL SHEETS	SHEET NO.
59895-shr-pp1.dgn		DRAWN - D.T.M.	REVISED -		36	07-00045-03-BR	McLEAN	27	4
		CHECKED - S.W.M.	REVISED -		CONTRACT NO. 91388				
		DATE - 12/05/07	REVISED -		ILLINOIS FED. AID PROJECT				