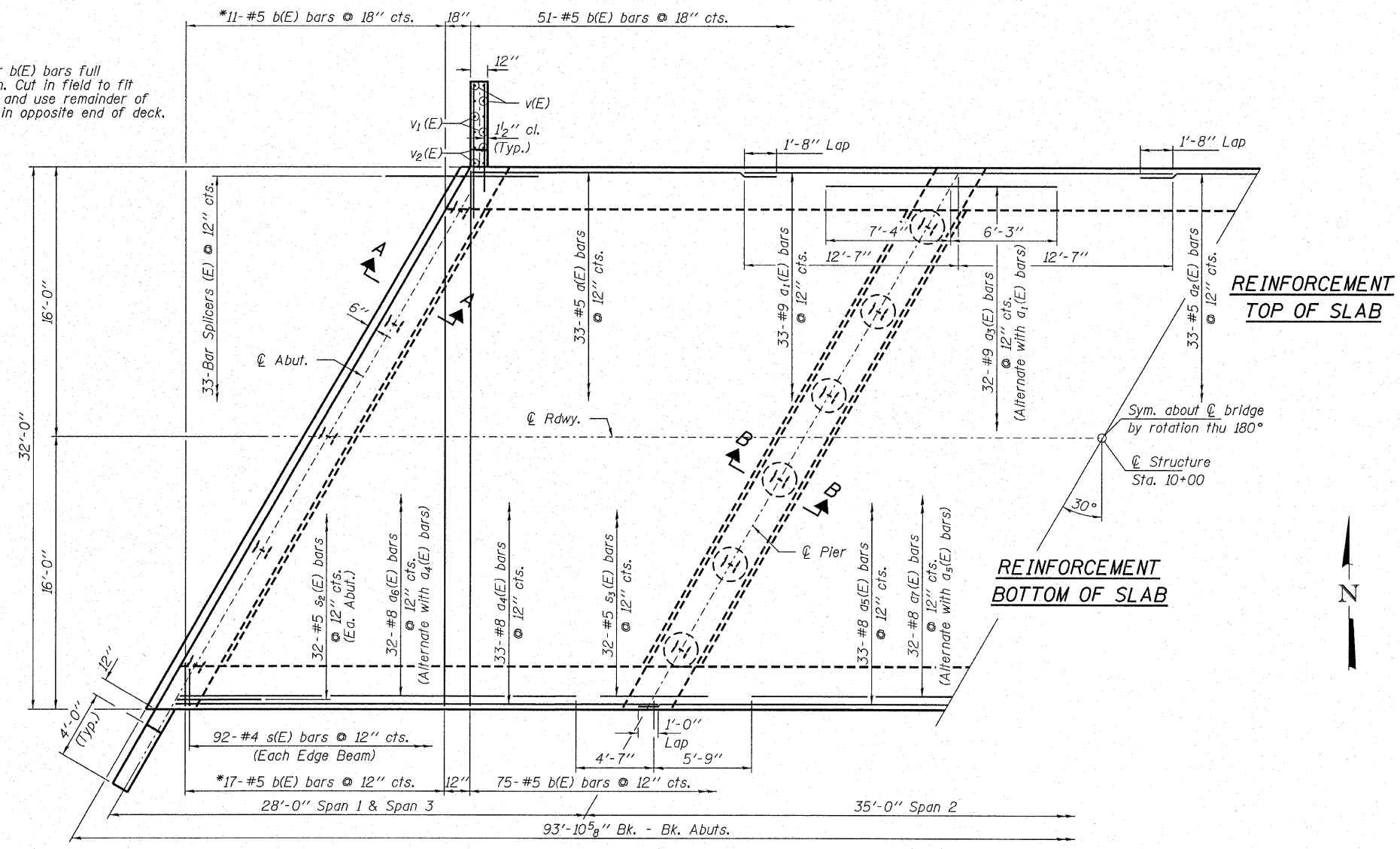


ROUTE NO.	SECTION	COUNTY	TOTAL SHEETS	SHEET NO.
C.H. 36	07-00045-03-BR	McLEAN	27	18
FED. ROAD DIST. NO.		ILLINOIS CONTRACT NO. 91388		

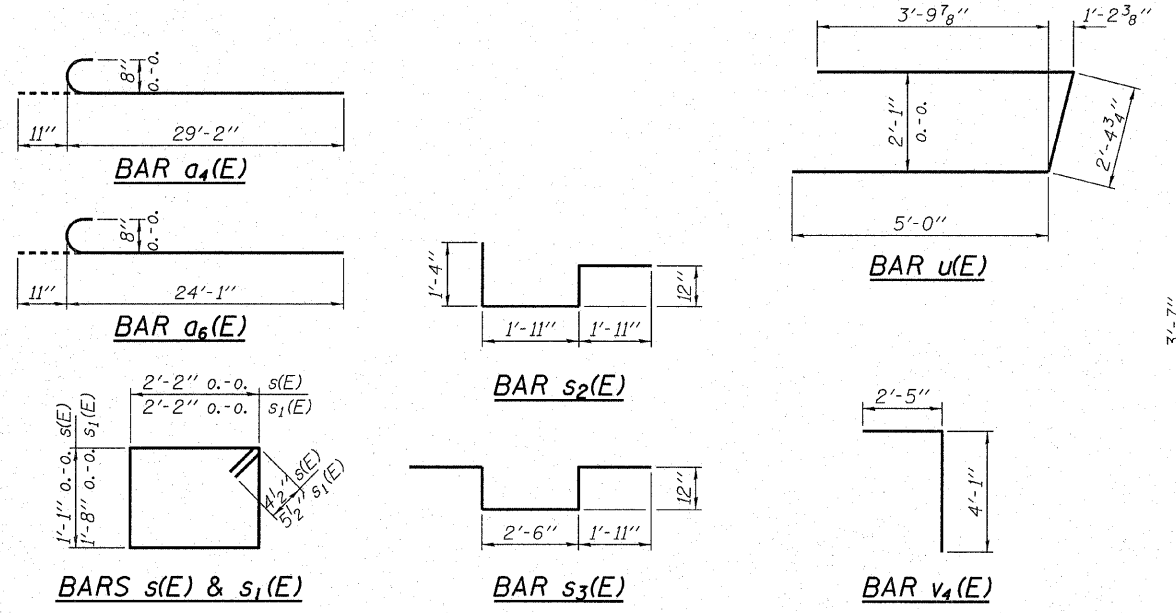
* Order b(E) bars full length. Cut in field to fit skew and use remainder of bars in opposite end of deck.



PLAN

BILL OF MATERIAL

BAR	NO.	SIZE	LENGTH	SHAPE
a(E)	66	#5	17'-10"	—
a ₁ (E)	66	#9	25'-2"	—
a ₂ (E)	33	#5	13'-4"	—
a ₃ (E)	64	#9	13'-7"	—
a ₄ (E)	66	#8	30'-1"	C
a ₅ (E)	33	#8	36'-0"	—
a ₆ (E)	64	#8	25'-0"	C
a ₇ (E)	32	#8	23'-6"	—
b(E)	154	#5	31'-8"	—
h(E)	24	#4	6'-9"	—
h ₁ (E)	24	#4	4'-9"	—
p(E)	22	#7	36'-8"	—
p ₁ (E)	20	#8	36'-8"	—
s(E)	184	#4	7'-3"	□
s ₁ (E)	136	#5	8'-7"	□
s ₂ (E)	64	#5	6'-2"	□
s ₃ (E)	64	#5	8'-4"	□
u(E)	24	#6	12'-5"	—
v(E)	16	#4	1'-4"	—
v ₁ (E)	16	#4	2'-4"	—
v ₂ (E)	16	#4	3'-4"	—
v ₃ (E)	192	#5	3'-2"	—
v ₄ (E)	64	#5	6'-6"	—



WING DETAIL
(Typ. all Wingwalls)

Note: For edge beam details see Detail A on sheet 19.

Bonded Const. Jt. Mandatory

MIN. BAR LAPS
#5 - 1'-8"

HAMPTON, LENZINI & RENWICK, INC.
CIVIL & STRUCTURAL ENGINEERS
LAND SURVEYORS

3085 STEVENSON DRIVE, SUITE 201
SPRINGFIELD, ILLINOIS 62703
(217) 546-3400

ELGIN • SPRINGFIELD

PROJECT NUMBER: 12-59-0055-1 DATE: 01/22/09
DESIGNED: P.S.L. CHECKED: S.W.M. DRAWN: D.A.B.

Material	Quantity	Unit
Concrete Structures	31.7	Cu. Yd.
Concrete Superstructure	137.4	Cu. Yd.
Concrete Encasement	16.3	Cu. Yd.
Protective Coat	309	Sq. Yd.
Reinforcement Bars, Epoxy Coated	38,590	Pound
Steel Piles HP10x42	1,080	Foot
Test Pile Steel HP10x42	2	Each
Name Plates	1	Each
Bar Splicers (E)	66	Each

Reinforcement bars designated (E) shall be epoxy coated. For Elevations, Sections A-A, and B-B see sheet 19.

SUPERSTRUCTURE
C.H. 36 / F.A.S. 487
SECTION 07-00045-03-BR
McLEAN COUNTY
STRUCTURE NO. 057-3211 / STATION 10+00