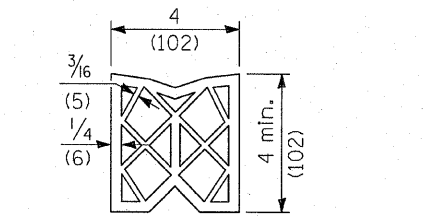
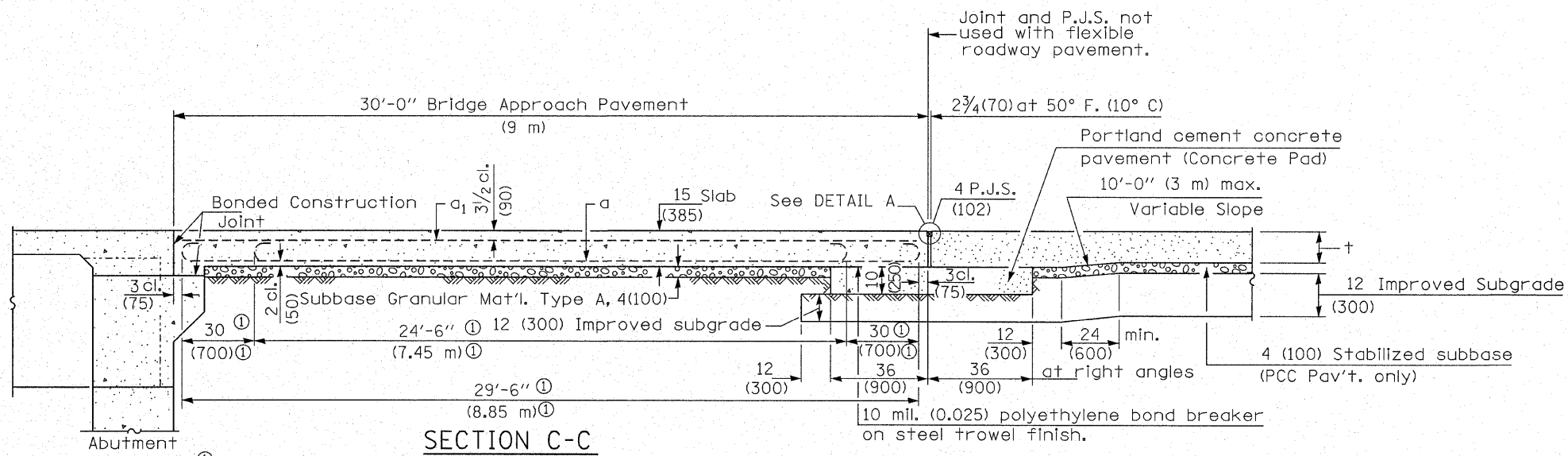
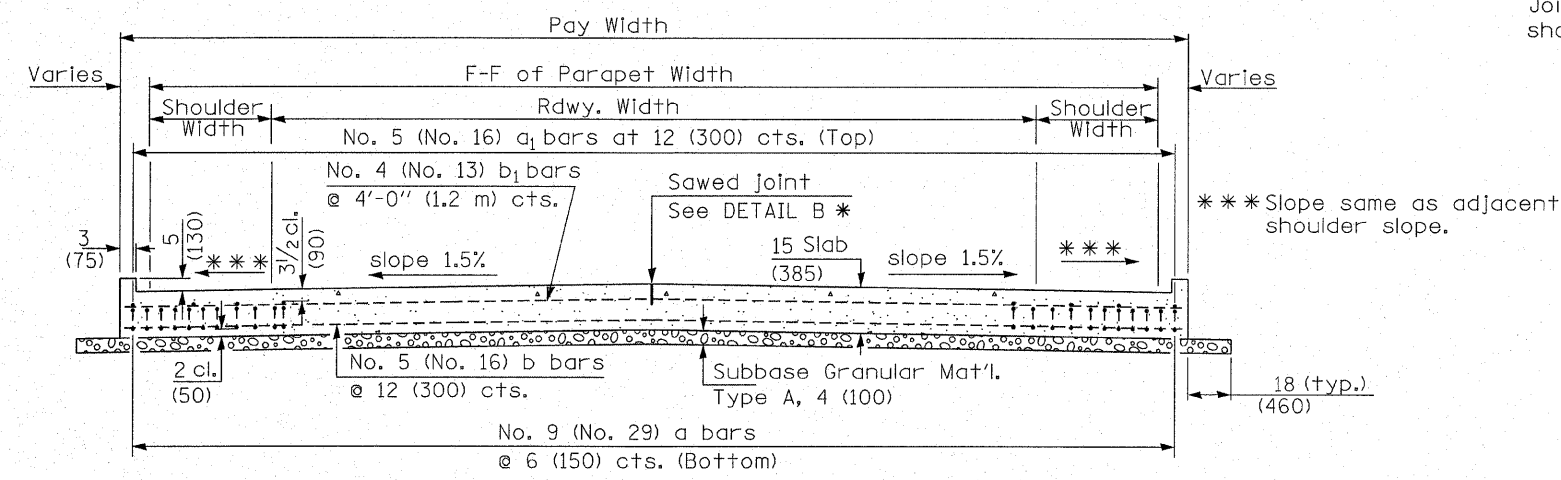
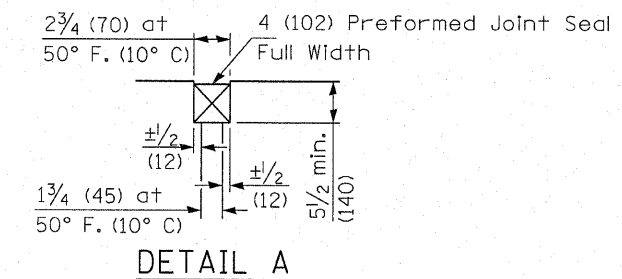


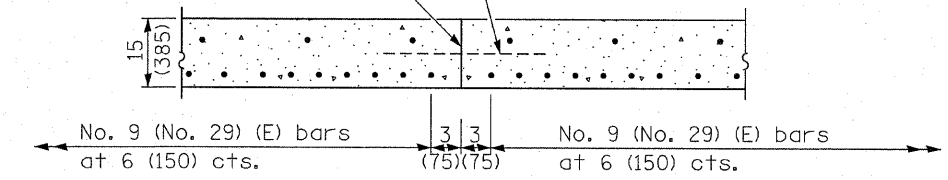
ROUTE NO.	SECTION	COUNTY	TOTAL SHEETS	SHEET NO.
C.H. 36	07-00045-03-BR	McLEAN	27	26
FED. ROAD DIST. NO.		ILLINOIS CONTRACT NO. 91388		



PREFORMED JOINT SEAL

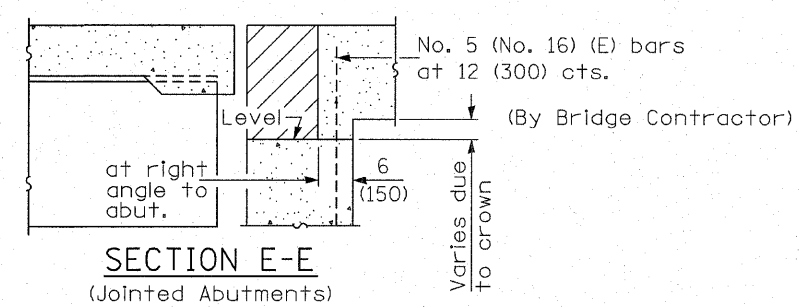
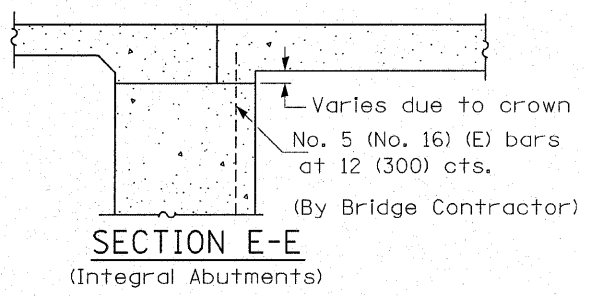
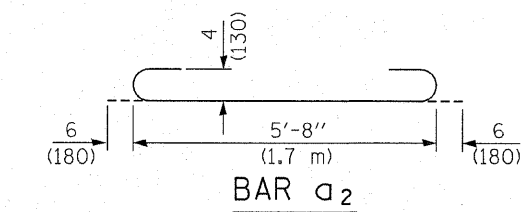
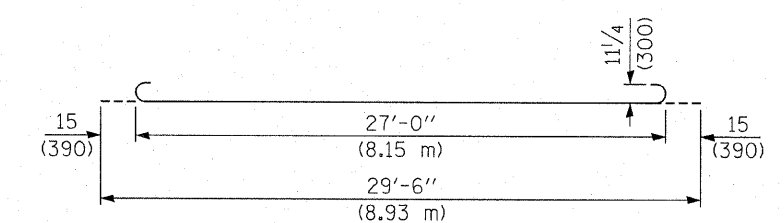


Longitudinal Construction Joint in accordance with details shown on Standard 420001.



OPTIONAL LONGITUDINAL CONSTRUCTION JOINT

As approved by the Engineer, the Contractor may elect to reduce the widths of pour by use of the Optional Longitudinal Construction Joint shown. Joints shall be located at the edge of a traffic lane.



DESIGN STRESSES
 f_y = 60,000 p.s.i. (400 MPa)
 f'_c = 3,500 p.s.i. (24 MPa)
 n = 8.5

HAMPTON, LENZINI & RENWICK, INC.
 CIVIL & STRUCTURAL ENGINEERS
 LAND SURVEYORS

3085 STEVENSON DRIVE, SUITE 201
 SPRINGFIELD, ILLINOIS 62703
 (217) 546-3400

ELGIN • SPRINGFIELD

PROJECT NUMBER: 12-59-0055-1 DATE: 01/22/09
 DESIGNED: P.S.L. CHECKED: S.W.M. DRAWN: D.A.B.

BRIDGE APPROACH PAVEMENT
 DETAIL
 C.H. 36 / F.A.S. 487
 SECTION 07-00045-03-BR
 McLEAN COUNTY
 STRUCTURE NO. 057-3211 / STATION 10+00