

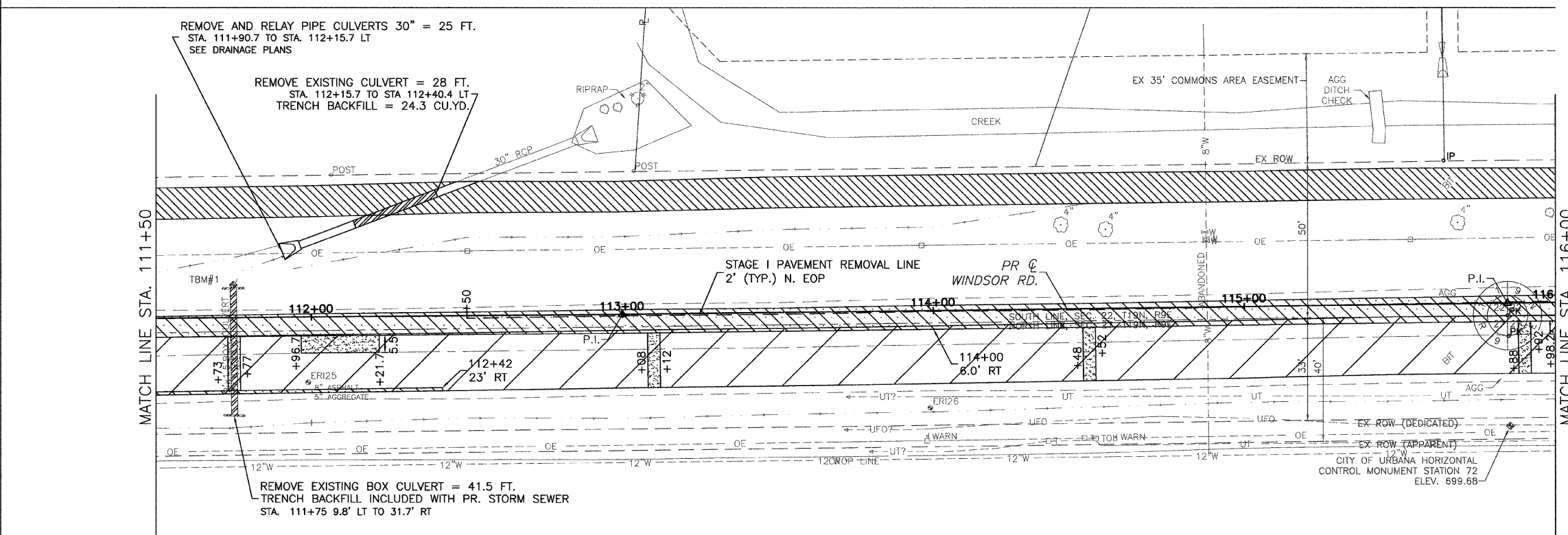
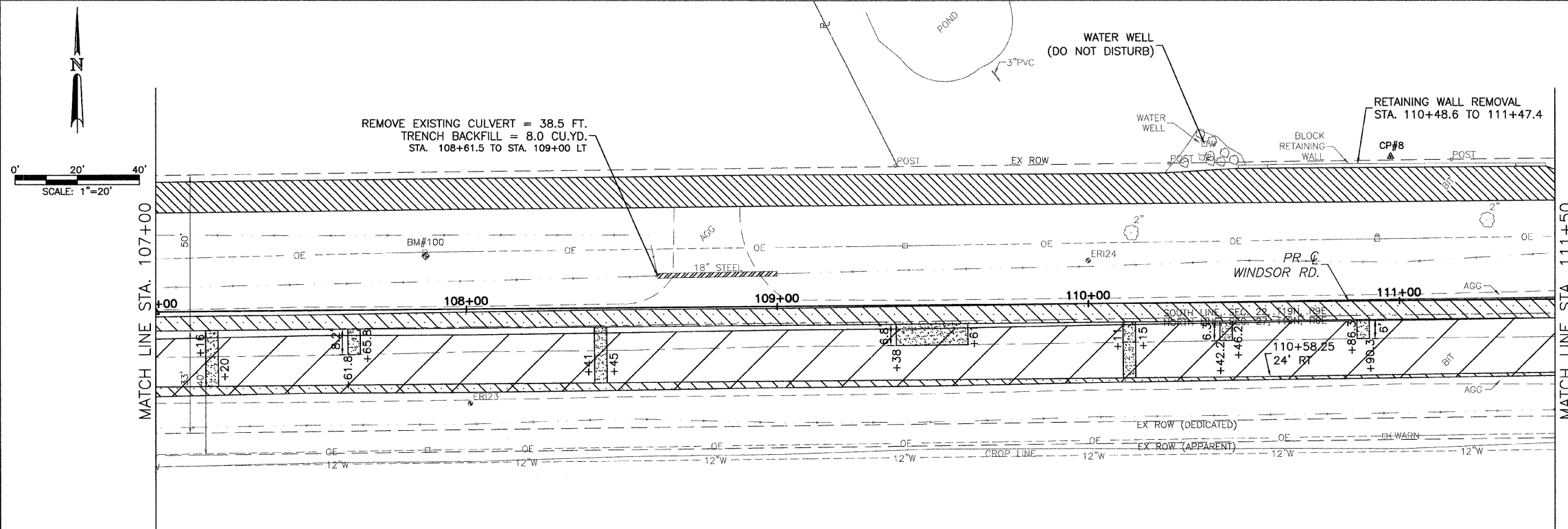


CITY OF URBANA  
PUBLIC WORKS  
ENGINEERING DIVISION

DRAWN BY: AJS  
CHECKED BY: GLJ  
CITY SECTION  
00-00361-00-PV

WINDSOR ROAD IMPROVEMENTS  
REMOVALS & RELOCATIONS PLANS  
STA 107+00 TO STA 116+00

SHEET NO.  
33  
OF  
145



LEGEND

- STRUCTURE TO BE REMOVED
- DRIVEWAY PAVEMENT REMOVAL
- PAVEMENT REMOVAL
- CLASS C PAVEMENT PATCHES
- SIDEWALK REMOVAL
- CULVERT REMOVAL
- COMB. CURB & GUTTER REMOVAL
- HMA SURFACE REMOVAL, VARIABLE DEPTH
- HMA SURFACE REMOVAL, 2 1/2" DEPTH
- TREE REMOVAL

ALL VARIOUS SIGNS WHICH INTERFERE WITH CONSTRUCTION OPERATIONS SHALL BE REMOVED AND RELOCATED AS DIRECTED BY THE ENGINEER. SEE SPECIAL PROVISIONS.

SEE PLAN AND PROFILE SHEETS AND DRAINAGE STRUCTURE SCHEDULES FOR STRUCTURE REMOVAL INFORMATION.

SEE INTERSECTION DETAIL SHEETS FOR THE REMOVAL LIMITS.

EX UNDERGROUND TELEPHONE NOT SHOWN FROM STA. 94+00 TO STA. 114+00

JAN 09 2009 12:57PM REMREC STA107+00-116+00.DWG