



CITY OF URBANA  
PUBLIC WORKS  
ENGINEERING DIVISION

DATED: 1/09  
DESIGNED BY: CES  
DRAWN BY: AUS  
CHECKED BY: GLJ  
CITY SECTION  
00-00361-00-PV

WINDSOR ROAD IMPROVEMENTS  
PLAN AND PROFILES  
STA 75+50 TO STA 80+00

SHEET NO.  
38  
OF  
145

CONTRACT NO. 91391

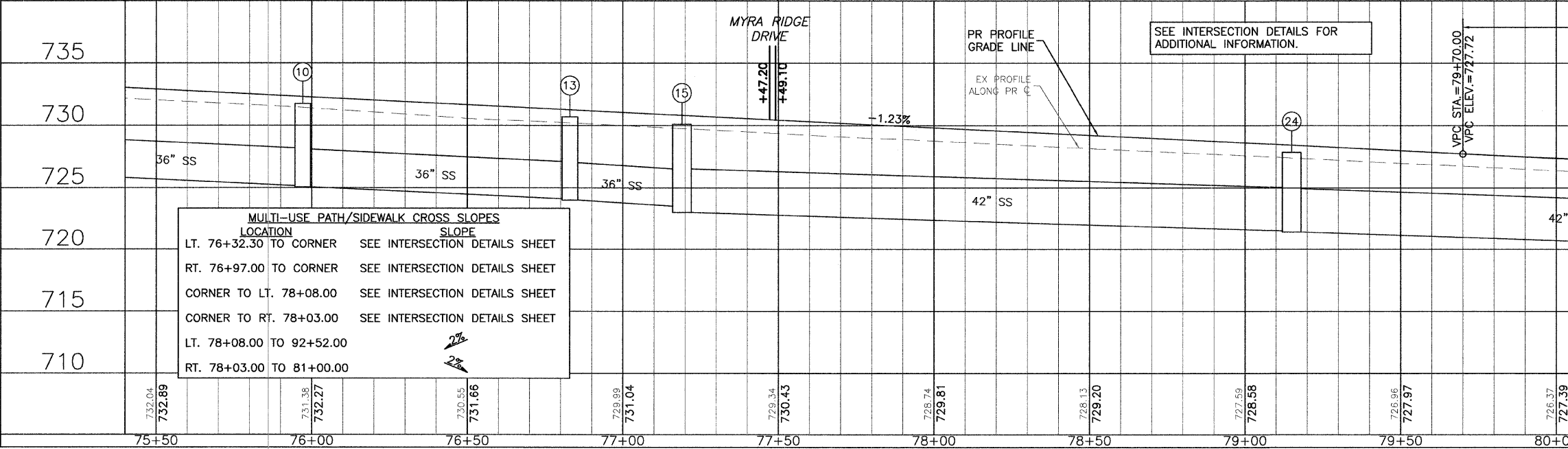
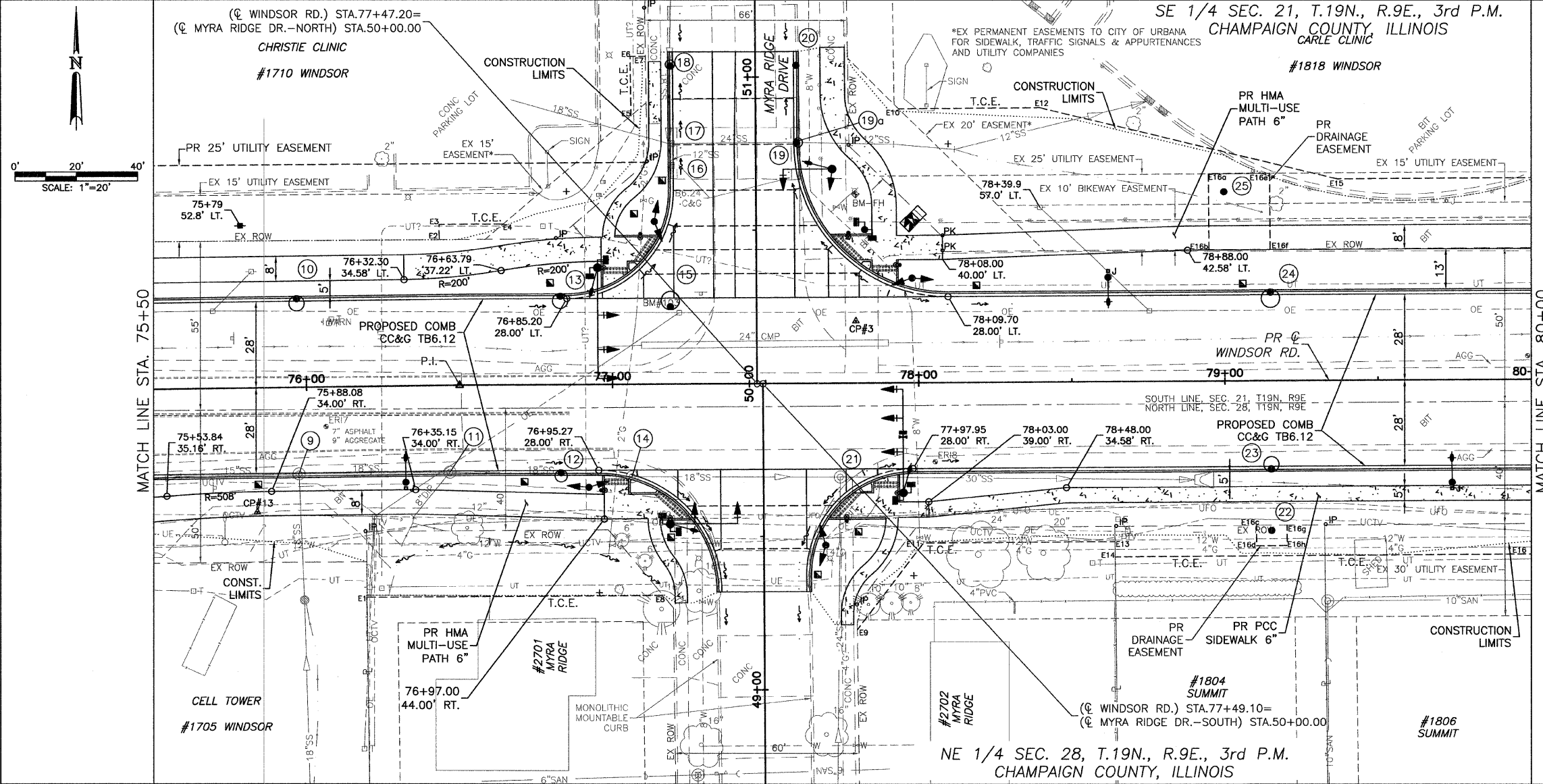
- LEGEND**
- DETECTABLE WARNINGS
  - PCC SIDEWALK
  - PCC DRIVEWAY PAVEMENT
  - AGGREGATE SURFACE COURSE, TYPE A
  - INCIDENTAL HMA SURFACE
  - DRAINAGE STRUCTURE NO. (SEE DRAINAGE SHEETS)

BM #103: STA. 77+21.50, 23.20' LT.  
RR SPIKE IN FIRST POWER POLE  
WEST OF MYRA RIDGE DR. &  
WINDSOR RD.  
ELEV.= 730.87

BM-FH: STA. 77+79.00, 61.50' LT.  
N.E. BOLT OF FIRE HYDRANT ON  
THE N.E. CORNER OF MYRA RIDGE  
DR. & WINDSOR RD. ELEV.= 729.69

**TEMPORARY CONSTRUCTION EASEMENT STATIONS AND OFFSETS**

POINT	STATION	OFFSET
E1	76+18.84	68.90 RT
E2	76+43.96	47.45 LT
E3	76+43.98	52.44 LT
E4	76+64.57	52.44 LT
E5	77+06.34	106.88 LT
E6	77+06.53	87.76 LT
E7	77+11.34	106.93 LT
E8	77+16.03	69.00 LT
E9	77+79.42	80.53 RT
E10	77+93.93	89.59 LT
E11	78+01.18	52.40 RT
E12	78+40.00	89.65 LT
E13	78+63.76	52.32 RT
E14	78+63.79	57.32 RT
E15	79+37.00	65.77 LT
E16	80+00.81	57.15 RT
E16a	78+95.00	67.72 LT
E16b	78+95.02	42.72 LT
E16c	79+10.00	47.27 RT
E16d	79+10.01	53.97 RT
E16e	79+15.00	67.74 LT
E16f	79+15.02	42.74 LT
E16g	79+20.00	47.25 RT
E16h	79+20.01	53.95 RT



**MULTI-USE PATH/SIDEWALK CROSS SLOPES**

LOCATION	SLOPE
LT. 76+32.30 TO CORNER	SEE INTERSECTION DETAILS SHEET
RT. 76+97.00 TO CORNER	SEE INTERSECTION DETAILS SHEET
CORNER TO LT. 78+08.00	SEE INTERSECTION DETAILS SHEET
CORNER TO RT. 78+03.00	SEE INTERSECTION DETAILS SHEET
LT. 78+08.00 TO 92+52.00	2%
RT. 78+03.00 TO 81+00.00	2%

MAR 20 2009 8:14AM PP STA75+50-80+00.DWG