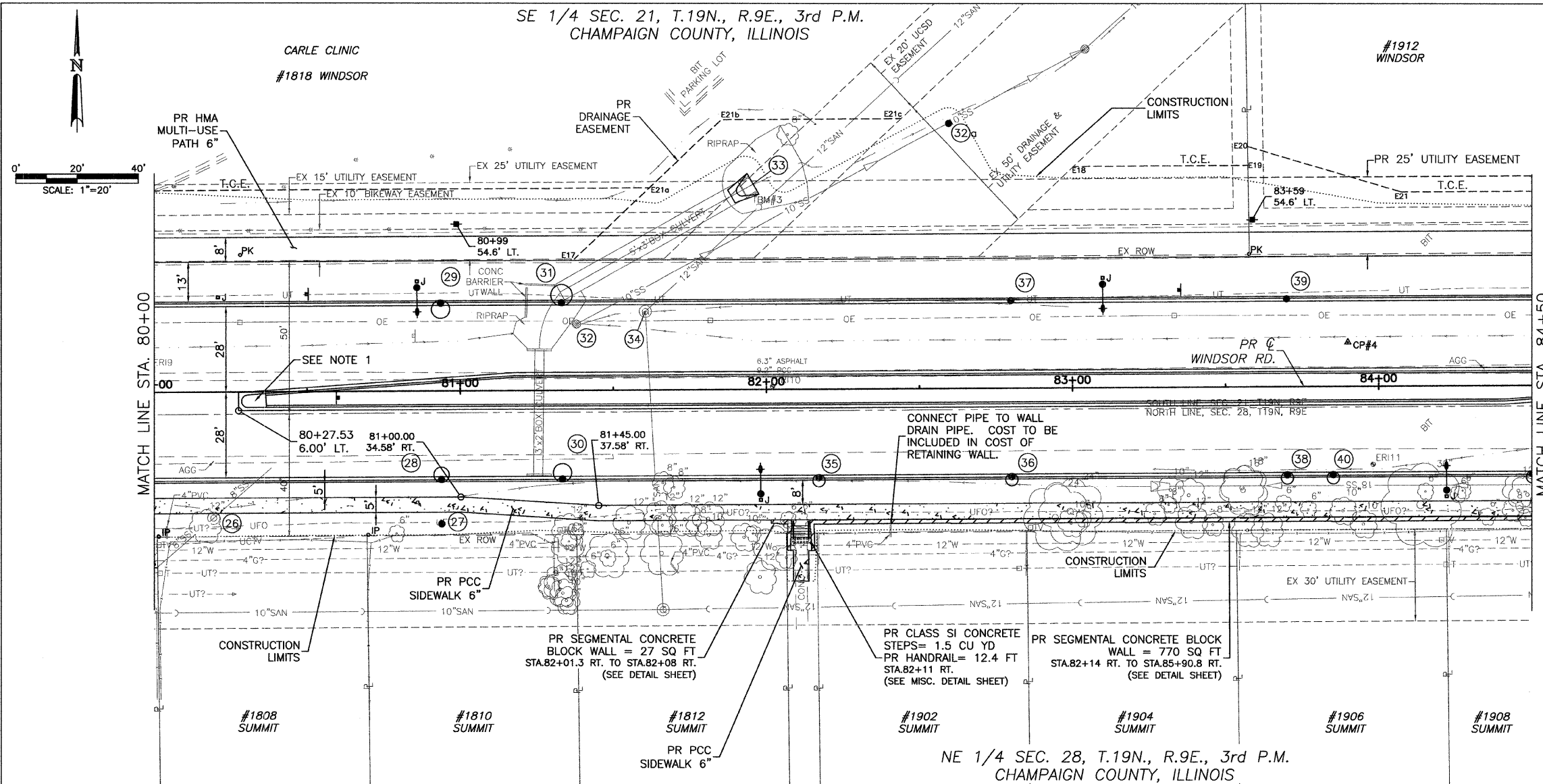




CITY OF URBANA
PUBLIC WORKS
ENGINEERING DIVISION

CONTRACT NO. 91391



LEGEND

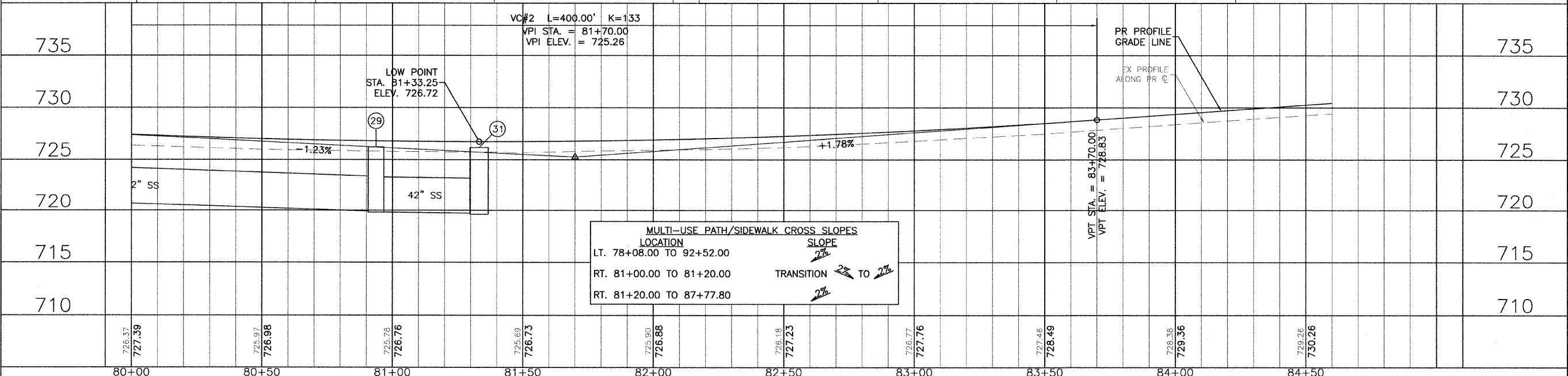
	DETECTABLE WARNINGS
	PCC SIDEWALK
	PCC DRIVEWAY PAVEMENT
	AGGREGATE SURFACE COURSE, TYPE A
	INCIDENTAL HMA SURFACE
	DRAINAGE STRUCTURE NO. (SEE DRAINAGE SHEETS)

TBM #3: STA. 81+97.00, 64.50' LT. S.E. CORNER OF BOX CULVERT, N. SIDE OF BIKE PATH N. OF WINDSOR ROAD BETWEEN MYRA RIDGE DR. & SUSAN STONE DR. ELEV.= 723.42

- NOTES:**
- PROPOSED CONCRETE MEDIAN, TYPE SB-6.12 (SEE MISC. DETAILS SHEETS)

TEMPORARY CONSTRUCTION EASEMENT STATIONS AND OFFSETS

POINT	STATION	OFFSET
E17	81+62.20	66.04 LT
E18	83+00.72	72.21 LT
E19	83+57.72	72.28 LT
E20	83+57.66	78.28 LT
E21	84+07.81	63.35 LT
E21a	81+62.20	66.04 LT
E21b	81+85.81	88.07 LT
E21c	82+44.51	88.14 LT



WINDSOR ROAD IMPROVEMENTS
PLAN AND PROFILES
STA 80+00 TO STA 84+50

SHEET NO.
39
OF
145

MAR 20 2009 9:07AM PP_STAB0+00-84+50.DWG